



# *Fresh and Local!*

Food and Farms of Southern California's Inland Valleys





# ***Inland Grown*** is Growing!

The Riverside Food Systems Alliance (RFSa) has undertaken a challenge to help build a *farm to fork and back to farm* local economy by supporting regional programs that train new farmers, connect growers to vacant land, prevent food waste, connect restaurateurs to local food producers, support community gardens, manage lands sustainably, and much more. Support from consumers, farms, businesses, and organizations has been inspiring and continues to grow.

## **THANK YOU!**

If you're not involved, but would like to be, please contact RFSa at [info@riversidefoodsystemsalliance.org](mailto:info@riversidefoodsystemsalliance.org) or (951) 888-0646. Find us at [riversidefoodsystemsalliance.org](http://riversidefoodsystemsalliance.org) and on Facebook: Riverside Food Systems Alliance.



## ***What are the advantages of buying locally grown foods?***

***Good Health*** – Freshly picked produce usually has more nutrients and better taste. Don't forget: you can reduce the risk of many diseases by eating more fruits and veggies.

***Strengthen our Local Economy*** – By using your purchasing power, you can support local farms and jobs. What's earned here - stays here.

### ***Protect the Environment***

Local products have little travel time, which reduces emissions that pollute our air.

When you support sustainable growers, fewer pesticides and fertilizers are used and beneficial insects can control pests and pollinate crops. Farms that build soil health capture carbon from the atmosphere and help slow global climate change. Sustainable farmers also conserve expensive water, control erosion, and prevent pollutants from entering our waterways.

***Honor our Agricultural Heritage*** – Our growers take pride in what they do, whether their families have been here for generations or they are new urban farmers. Get to know your local farms and farmers, and help keep agriculture thriving around the inland region.

Join us in supporting the health of our inland economy, environment, and agriculture.

*To YOUR health!*

Diana Ruiz

*Fresh and Local* Editor for Riverside Food Systems Alliance (RFSa)

Riverside-Corona Resource Conservation District (RCRCD)



# CONTENTS

This guide is designed to help:

- consumers find locally grown foods
- connect farmers, gardeners and teachers to resources
- educate about growing our local food system.

## Food

Six simple ways to support your local food system.	4
Farmers' Markets	5
Farm Stands	7
Food Co-ops	9
CSAs	10
Groceries, Markets and Home Delivery Services	11
Restaurants	12

## Farms

Inland Valley Farms	13
Conservation and Sustainable Ag Resources	14
Farmland Preservation	16
Farming Resources	17
Map Index	22
Inland Valleys Map	24

## Resources

Community Gardens	26
Gardening Resources	28
Products from Local Farms	31
Healthy Living Resources	32
Educational Resources	33
Food Donation	36
Food Processing and Distribution	39
Agritourism Adventures	40

## About Inland Grown

What is GrowRIVERSIDE?	42
Riverside Food Systems Alliance (RFSA)	43
Food Systems Milestones	44
Join us: Three ways you can help	46

See sponsor listings in purple throughout this publication.

No endorsement of products, services, or viewpoints is intended, nor is criticism implied of similar products, services, or viewpoints that are not mentioned.

## 6 SIMPLE WAYS TO SUPPORT YOUR LOCAL FOOD SYSTEM.



### **SHOP AT A FARMERS MARKET.**

Buying directly from farmers is the best way to benefit the local economy. (See pages 5 and 6.)



### **VISIT A FARMSTAND OR U-PICK FARM.**

The on-farm experience is mouth-watering and fun. Take the opportunity to teach your loved-ones about healthy eating. (See pages 7, 8, 40 and 41.)



### **JOIN A FOOD CO-OP.**

A co-op is a member-owned, member-run grocer. Food cooperatives are supported by committed residents who are working to improve local economic conditions and environmental health. (See page 9.)



### **JOIN A CSA.**

Community Supported Agriculture (CSA) programs are partnerships between farmers and consumers. Consumers provide financial support to a farm by paying in advance, and in return, receive a box of produce regularly throughout the growing season. (See page 10.)



### **PURCHASE LOCAL PRODUCTS IN GROCERY STORES OR FROM HOME DELIVERY.**

Make it a point to patronize those stores that supply local foods. When you shop, look for “locally grown” signs in the produce section. (See page 11.)



### **PATRONIZE RESTAURANTS.**

When you patronize those restaurants that use locally grown foods, you keep money circulating in the local economy, providing jobs. (See page 12.)

**Support the local economy from your dinner table!**



## **1** Farmers' Markets Riverside County

- 1 Canyon Lake Farmers' Market<sup>EW</sup>**  
31516 Railroad Canyon Rd., Canyon Lake  
*Sundays • 9 am - 1 pm*  
(951) 491-4111
- 2 Corona Farmers' Market<sup>W</sup>**  
488 Corona Mall (S. Main St.), Corona  
*Saturdays • 8:30 am - 12:30 pm*  
(760) 728-7343
- 3 Rubidoux Farmers' Market<sup>EWM</sup>**  
5256 Mission Blvd., Jurupa Valley  
*Mondays • 10 am - 2 pm*
- 4 Valley Patch Farmers' Market<sup>EW</sup>**  
6327 Pats Ranch Rd., Jurupa Valley  
*Saturdays • 8 am - 1 pm*  
(951) 836-0339
- 5 Moreno Valley Farmers' Market<sup>EWM</sup>**  
14075 Frederick St., Moreno Valley (City Hall)  
*Thursdays • 9 am - 1 pm*  
(714) 345-3087
- 6 Murrieta Farmers' Market<sup>W</sup>**  
24420 Village Walk Plaza, Murrieta  
*Sundays • 9 am - 1 pm*  
(951) 240-9584
- 7 Norco Farmers' Market<sup>E</sup>**  
3900 Acacia Ave., Norco (Alhambra & Acacia)  
*Sundays • 10 am - 2 pm*
- 8 Nuevo Farmers Market**  
29680 Lakeview Ave., Nuevo  
*First and Third Saturdays • 9 am - 1 pm*
- 9 County Circle Farmers' Market<sup>EW</sup>**  
4065 County Circle, Riverside  
*Thursdays • 9 am - 2 pm*
- 10 County of Riverside Farmers' Market<sup>EWM</sup>**  
County Administration Center  
4080 Lemon St., Riverside (Lemon & Tenth St.)  
*Wednesdays • 8:30 am - 1:30 pm*
- 11 Downtown Farmers' Market on Main St.<sup>W</sup>**  
Main St. between Fifth & Sixth St., Riverside  
*Saturdays • 8 am - 1 pm*  
(951) 345-3087
- 12 Galleria at Tyler Farmers' Market<sup>EWM</sup>**  
1299 Galleria at Tyler, Riverside  
(Barnes & Noble parking lot)  
*Sundays • 8:30 am - 12:30 pm*  
(805) 643-6458
- 13 Kaiser Permanente Farmers' Market<sup>EW</sup>**  
10800 Magnolia Ave., Riverside  
*Fridays • 9 am - 1 pm*  
(310) 481-0167
- 14 San Jacinto Valley Farmers' Market<sup>EWM</sup>**  
2479 S. San Jacinto Ave., San Jacinto  
*Thursdays • 8 am - 1 pm*  
(951) 238-9016
- 15 Old Town Temecula Farmers' Market<sup>W</sup>**  
Sixth and Front St., Old Town Temecula  
*Saturdays • 8:30 am - 12:30 pm*
- 16 Promenade Temecula Farmers' Market<sup>EW</sup>**  
40640 Winchester Rd. (Outside JC Penny),  
Temecula  
*Wednesdays • 9 am - 1 pm*
- 17 Vail Headquarters Farmers' Market<sup>EW</sup>**  
32115 Temecula Pkwy. (Redhawk Towne Ctr.)  
*Tuesdays • 9 am - 1 pm*

Food Vouchers Accepted:  
M = Market Match E = EBT W = WIC



### Buying local food makes dollars and sense.

Money spent locally has a multiplier effect within the inland area economy. Currently, residents spend less than 1% on food produced locally. You can help by increasing your local food expenditures to 20% of your grocery bill. The dollar amount will vary, but on average, it's about \$31 per week.

## Farmers' Markets

### San Bernardino County

#### 18 Chino Hills Certified Farmers' Market

14000 City Center Dr., Chino Hills  
Wednesdays • 4 pm - 8 pm  
(714) 455-0181

#### 19 Arrowhead Medical Ctr. Farmers' Market

400 Pepper Ave., Colton  
Wednesdays • 8 am - 1 pm  
(310) 455-0181

#### 20 Kaiser Permanente Farmers' Market

9961 Sierra Ave., Fontana (Kaiser Medical Ctr.)  
Fridays • 8 am - 2 pm  
(310) 455-0181

#### 21 Loma Linda Farmers' Market

11145 Anderson Rd., Loma Linda  
Tuesdays • 4 pm - 7:30 pm  
(909) 799-2828

#### 22 Kaiser Permanente Farmers' Market

2295 S. Vineyard Ave., Ontario  
(Kaiser Medical Ctr.)  
Wednesdays • 8 am - 2 pm  
(310) 455-0181

#### 23 Terra Vista Town Ctr. Farmers' Market

10808 Foothill Blvd., Rancho Cucamonga  
Saturdays • 9 am - 2 pm  
(951) 544-8399

#### 24 Victoria Gardens Farmers' Market

12505 N. Main St., Rancho Cucamonga  
Fridays • 10 am - 2 pm  
(909) 264-5195

Food Vouchers Accepted:

M = Market Match E = EBT W = WIC

#### 25 Redlands Market Night<sup>E</sup>

E. State St. between Orange & Ninth St., Redlands  
Thursdays • 6 pm - 9 pm  
(909) 798-7629

#### 26 Redlands Saturday Farmers' Market<sup>E</sup>

Redlands Blvd. between Fifth & Sixth St., Redlands  
Saturdays • 8 am - 11 am  
(909) 798-7629

#### 27 Farmers' Market at the Grove School

1775 Orange Ave., Redlands (Heritage Park)  
Saturdays • 8 am - 12 pm  
(909) 241-8100

#### 28 Rialto Farmers' Market

290 W. Rialto Ave., Rialto (Palm & Rialto Ave.)  
Wednesdays • 10 am - 2 pm  
(909) 820-2519

#### 29 Perris Hill Park Farmers' Market

1001 E. Highland Ave, San Bernardino  
Thursdays • 11 am - 2 pm  
(909) 387-5233

#### 30 Yucaipa Farmers' Market

35139 Yucaipa Blvd., Yucaipa  
Fridays • 6:30 pm - 9:30 pm (May - Sept.)  
(909) 790-1841



Many Farmers' Markets offer Market Match for CalFresh, EBT, and WIC participants. These benefit dollars are doubled, putting more healthy fruits and vegetables on the table. Farmers benefit by selling locally produced food locally.

The Riverside Food Systems Alliance helped bring Market Match to the Inland region.



## Farm Stands

### Riverside County

#### 31 Corona Farm

2701 Madison Ave. (at Victoria), Riverside  
 Open 7 days • 9 am - 4:30 pm  
 Facebook: coronafarms2014  
 Seasonal fruits and vegetables

#### 32 Doughty Apiaries

34385 Cooperman Circle, Temecula  
 Please call, usually open 9 am - 5 pm  
 (951) 694-5319  
 Raw honey products

#### 33 Garcia Produce

9248 Victoria Ave. (at Gibson), Riverside  
 Open 7 days • 7 am - 5 pm  
 (909) 376-0494 [garciafarming@yahoo.com](mailto:garciafarming@yahoo.com)  
 Avocados, citrus, vegetables, firewood

#### 34 Gless Ranch (2 locations)

**Market:** 19985 Van Buren Blvd., Riverside  
**Fruit Stand:** Van Buren & Dufferin Aves. Riverside  
 Open 7 days • Market: 8 am - 6 pm  
 Stand 9 am - 5 pm  
 (951) 653-5991 [www.glessranch.com](http://www.glessranch.com)  
 Produce, fruit and specialty grocery

#### 35 Gloria's Nursery

2078 Van Buren Blvd., Riverside  
 Open 7 days • 9 am - 5 pm  
 (951) 536-8979  
 Fruits, vegetables, honey, pottery

#### 36 GoneStraw Farms

13456 El Sobrante Rd., Riverside  
 Weekdays 9 am - 5 pm, Sat. & Sun. 8 am - 5 pm  
 (951) 453-0875  
 Chicken, quail & duck eggs, raw local honey

#### 37 Medina Farm

10354 Dufferin Ave., Riverside  
 (951) 588-8384, [Cridge123@me.com](mailto:Cridge123@me.com)  
 Seasonal sales: avocado, oranges, more.

#### 38 R.S. Farms

8855 Victoria Ave. (at Irving St.), Riverside  
 Tues.-Sun., 9 am - 5 pm, closed during rain  
 Vegetables, fruits

#### 39 The Farm

SW corner of Brookside Ave. & Maureen,  
 Cherry Valley  
 9 am - 2 pm, June - November  
 Seasonal produce.

#### 40 Sky Farm Organics

42913 Johnston Ave., Hemet  
 Saturdays, 9 am - 1 pm (seasonal see below)  
 Navel oranges: Jan - April, tomatoes: July - Oct.

#### 41 Washburn Ranch Fruit Stand

46300 Borco St., Hemet  
 Thursday - Sunday, 9 am - 5 pm  
 Seasonal fruit, Christmas trees

#### 79 Sage Mountain Farm

55520 Hwy. 371, Anza, CA 92539  
 (951) 663-3079 [sagemountainfarm.com](http://sagemountainfarm.com)  
 Open May 1 through Dec. 1



### Why support small farmers?

Small farmers play a pivotal role in our food system. So, why is it that so many of us don't know who our local farmers are, or what it takes for food to get to our plate? Visit this website to find out how to support them, and get the delicious, seasonal food that's good for you and the environment! Watch the video featuring Zoëy Deschanel: *On the Importance of Small Farmers* at [www.thefarmproject.com/blog/small-farmers-need-our-support](http://www.thefarmproject.com/blog/small-farmers-need-our-support)



## Farm Stands

### San Bernardino County

- 42 Adams Acres**  
652 S. Cactus Ave., Rialto  
(909) 875-3776  
Open 7 days • 9 am - 5 pm  
Historic grove. Wide variety of fruits and vegetables.
- 43 Arnott Farms**  
9151 Greenspot Rd., Mentone  
(909) 389-9600 [www.arnottfarms.com](http://www.arnottfarms.com)  
Monday - Saturday • 7 am - 5:30 pm  
Seasonal: Oranges, eggs, nuts, honey, avocados
- 44 Farquhar Farms**  
1898 Fifth Ave., Redlands  
(909) 648-4058 [www.farquharfarms.com](http://www.farquharfarms.com)  
Monday-Saturday • 11 am - 5 pm  
Seasonal sales: avocado, oranges, honey, produce
- 45 Garcia Ranch**  
1425 E San Bernardino Ave., Redlands
- 46 Jacinto Farms (2 locations)**  
2108 Mentone Blvd., Mentone (909) 389-9458  
1269 Brookside Ave., Redlands (909) 335-2333  
Open 7 days • 9 am - 6:30 pm  
[www.jacintofarms.com](http://www.jacintofarms.com)  
Citrus, avocados, produce, jams
- 47 Mom's Country Orchards**  
38695 Oak Glen Rd., Yucaipa  
(909) 797-4249 [momsorakglen.com](http://momsorakglen.com)  
Open 7 days • 10 am - 6 pm  
Produce, jams, cider, soap, gifts
- 48 Nicolson's Strawberries**  
8112 E Foothill Blvd., Rancho Cucamonga  
(909) 982-0086  
Open 7 days (during the season) • 8:30 am - 5:30 pm  
Seasonal sales: strawberries and cherries
- 49 Rojo Farms**  
8146 Chino Ave., Ontario  
(909) 996-4510  
Open 7 days • 8 am - 6 pm
- 50 Soffel Farms**  
1545 E San Bernardino Ave., Redlands  
(909) 809-7537 [soffelfarms.com](http://soffelfarms.com)  
Days and hours vary, call or email  
[Hsoffel67@gmail.com](mailto:Hsoffel67@gmail.com)  
Avocados, oranges, honey, blueberries,  
Christmas Trees





## 3 Food Co-ops

### Riverside Food Co-op

The Riverside Food Co-op is a California cooperative owned by its members, the consumers who are interested in buying locally grown produce, products, and cottage foods. The Co-op sells an optional monthly crop box that is filled with locally-sourced fruits and vegetables. The income from the crop box is used to fund the operating expenses of the Co-op.

The Co-op was started in January, 2012, and has the goal to open a cooperative grocery store once membership is large enough.

#### Riverside Food Cooperative, Inc.


(951) 290-7327

Sala Ponneh [riversidefoodcoop@gmail.com](mailto:riversidefoodcoop@gmail.com)

6143 Del Ray Ct., Riverside, CA 92506

[www.riversidefoodcoop.com](http://www.riversidefoodcoop.com)

Facebook: [RiversideFoodCoopInc](https://www.facebook.com/RiversideFoodCoopInc)



**FRIENDS  
OF  
RIVERSIDE'S  
HILLS**

**Supporting Wildlands  
Preservation in Riverside**

[www.FriendsofRiversidesHills.org](http://www.FriendsofRiversidesHills.org)

A Non-Profit 501\_3 (c) Public Benefit Corporation




**RIVERSIDE  
FOOD CO-OP**

**Food Co-op Facts**  
Serving Riverside

City Stats	% Value
3,350 acres dedicated farmland	
Population est.	
322,424 neighbors	
90,690 households	
28 neighborhoods	
Local food buying (U.S. average)	1 %
Local food buying (your co-op)	100 %
Less than 25 miles to downtown	98 %
Less than 10 miles to downtown	51 %
Local ownership (your co-op)	100 %
Fairness Participation	Health Community

Annual Members' Report 2015-2016

**A community grocer.  
Member owned.  
Member run.**

**Join your neighbors.**

**GET YOUR  
MEMBERSHIP.**

**riversidefoodcoop.com**  
riversidefoodcoop@gmail.com | 951.290.7327

Thank you to Friends of Riverside's Hills and Riverside Food Co-op for supporting our local food system!

## 4 CSAs

CSA is an acronym for Community-Supported Agriculture, a program where community members support a local farm by signing up to buy produce directly from that farm on a regular basis. While some CSAs deliver through centralized drop-off points, others deliver directly to homes and offices.

### Da-Le Ranch

619-886-4102

[info@daleranch@gmail.com](mailto:info@daleranch@gmail.com)

24895 Baxter Ranch Rd., Lake Elsinore, CA 92532

[www.da-le-ranch.com](http://www.da-le-ranch.com)

Facebook: Da-Le Ranch Meat

Free range meat, poultry and eggs

### Huerta Del Valle

(909) 347-2860

[info@huertadelvalle.org](mailto:info@huertadelvalle.org)

831 E. Belmont St. Ontario, CA 91761

[www.huertadelvalle.org](http://www.huertadelvalle.org)

Facebook: HDVhuertadelvalle

Fruits, herbs and vegetables

### Rancho de Los Proyectos

(909) 433-9331

[Family@ranchoproyectos.us](mailto:Family@ranchoproyectos.us)

7883 Stewart Rd., Colton, CA 92324

[www.ranchoproyectos.us](http://www.ranchoproyectos.us)

Produce, eggs, sauces

### Rolling Hills Herbs & Annuals

(909) 362-7658

email contact thru website

Redlands CA 92374

[www.rollinghillsherbs.com](http://www.rollinghillsherbs.com)

Floral bouquets, heirloom plants

### Sage Mountain Farm

Phil Noble, (951) 663-3079

[phil@sagemountainfarm.com](mailto:phil@sagemountainfarm.com)

55520 Hwy. 371, Anza, CA 92539

[sagemountainfarm.com](http://sagemountainfarm.com),

[sagemountainbeef.com](http://sagemountainbeef.com),

Facebook: Sage Mountain Farm

USDA Certified Organic

Vegetable and meat CSAs run all year long

Also eggs, jams, dried tomatoes, honey, farm tours and farm dinners.



### Three Sisters Farm

Amy Harned, email through website

30370 San Timoteo Canyon Rd., Redlands, CA 92373

[threesistersfarm.org](http://threesistersfarm.org)

Facebook: Three Sisters Farm Redlands

USDA Certified Organic

Vegetables, herbs, cut flowers



### How to Choose a CSA by Local Harvest

Know Thyself: Utterly fantastic idea though it is, community supported agriculture is not for everyone. Deciding whether or not CSA is for you requires a healthy dose of self-knowledge.

Learn more at: <http://www.localharvest.org/newsletter/20100223/choosing-a-csa.html>



## Groceries, Markets & Home Delivery Services

### **Clark's Nutrition and Natural Foods Market** (2 locations)

4225 Market St., Riverside  
(951) 686-4757

11235 Mountain View Ave., Loma Linda  
(909) 478-771

[www.clarksnutrition.com](http://www.clarksnutrition.com)

### **Gerrard's Market**

705 W. Cypress Ave. Redlands  
(909) 793-2808

[www.gerrardsmarket.com](http://www.gerrardsmarket.com)

### **Goodwin's Organic Foods and Drinks**

191 W. Big Springs Rd., Riverside  
(951) 682-2667

[www.goodwinsorganics.com](http://www.goodwinsorganics.com)

### **La Michoacana Market**

4110 Victoria Ave., Riverside  
(951) 686-3263

### **La Sierra Natural Foods**

11550 Pierce St., Riverside  
(951) 785-2563

[lasierra.edu/natural-foods](http://lasierra.edu/natural-foods)

### **La Tapatia Market**

2009 University Ave., Riverside  
(951) 684-6233

### **Loma Linda Market**

11161 Anderson St. #100, Loma Linda  
(909) 558-4565

[www.lomalindamarket.com](http://www.lomalindamarket.com)

### **Mobile Fresh Bus**

Daily stops calendar:

[www.fsaca.org/what/mobile-fresh](http://www.fsaca.org/what/mobile-fresh)

Clarence de Guzman (951) 300-0456

### **Mother's Nutrition Center**

2308 University Ave., Riverside CA  
(951) 683-7769

[www.mothersnutritionalcenter.com](http://www.mothersnutritionalcenter.com)

### **Tom's Farm**

23900 Temescal Canyon Rd., Corona  
(951) 277-9992

[www.tomsfarms.com](http://www.tomsfarms.com)

*Thank you Kaiser Permanente for our capacity building grant!*



At Kaiser Permanente, we believe maintaining good health is easier when you're surrounded by good choices.

That's why we proudly support Riverside Food Systems Alliance and its *Fresh and Local* Guide to healthy, local food. Together, we can make healthy communities happen.

Visit [community.kp.org](http://community.kp.org) for details.

## Restaurants

### **A la Minute Ice Cream**

[www.alaminuteicecream.com](http://www.alaminuteicecream.com)

### **Redlands**

19 E. Citrus Ave. #105, Redlands 92373  
(909) 307-3751

### **Temecula**

32215 Temecula Pkwy., Temecula 92592  
Located inside the Wolf Store at Vail Headquarters  
temecula@alaminuteicecream.com

### **Claremont**

532 W. First St., Claremont 91711  
Located inside the Packing House  
claremont@alaminuteicecream.com

### **Bushfire Kitchen**

40665 Winchester Rd., Temecula 92591  
[www.bushfirekitchen.com](http://www.bushfirekitchen.com)  
(951) 296-0190

### **E.A.T Marketplace**

28410 Old Town Front St., Temecula 92590  
[eatmarketplace.com](http://eatmarketplace.com)  
(951) 694-3663

### **Goodwin's Cafe**

191 W. Big Springs Rd., Riverside 92507  
[www.goodwinsorganics.com](http://www.goodwinsorganics.com)  
(951) 682-2667

### **La Volata Pizzeria**

1453 Ford St. #101, Redlands 92373  
[www.lavolatapizzeria.com](http://www.lavolatapizzeria.com)  
(909) 792-0316

### **Oasis Vegetarian Cafe**

11550 Pierce St., Riverside 92505  
[www.oasisvegetarian.com/](http://www.oasisvegetarian.com/)  
(951) 688-5423

### **Olive and Citrus**

255 E Olive Ave., Redlands 92373  
[oliveandcitrus.com](http://oliveandcitrus.com)  
(909) 674-0094

### **The Pines Modern Steakhouse**

at San Manuel Indian Bingo & Casino  
777 San Manuel Blvd., Highland 92346  
(909) 425-4889

### **The Grand Oak Farm to Table**

10600 Highland Springs Ave., Beaumont 92223  
[hsresort.com/thegrandoak/](http://hsresort.com/thegrandoak/)  
(951) 845-1151

### **The Salted Pig**

3700 Twelfth St. at Main St., Riverside 92501  
[thesaltedpig.com](http://thesaltedpig.com)  
(951) 848-4020 [hello@thesaltedpig.com](mailto:hello@thesaltedpig.com)

### **Uno Tre Otto**

114 N. Indian Hill Blvd., Suite P, Claremont 91711  
in the alley between First and Second St.  
[www.unotreetto.com](http://www.unotreetto.com)  
(909) 624-1373

### **Wicks Craft Brewery & Restaurant**

11620 Sterling Ave. Ste. C, Riverside 92503  
[www.wicksbrewing.com](http://www.wicksbrewing.com)  
(951) 689-2739

### **Woodfire Café**

3965 Market St., Riverside 92501  
[woodfirecafe.com](http://woodfirecafe.com)  
(951) 465-5328



Riverside Public Utilities' rebate programs help you save money by conserving water and energy. Rebates include:



Energy Star Refrigerator



Energy Star Ceiling Fan



Energy Star Washer



Waterwise Landscape

### **NEED HELP PAYING YOUR UTILITY BILL?**



**SHARE**

Sharing Households  
Assist Riverside's Energy

SHARE is a Riverside Public Utilities (RPU) program that assists eligible, low-income residential electric customers with their utility bills and deposits.

For more information on RPU rebates and programs, visit [RiversidePublicUtilities.com/Rebates](http://RiversidePublicUtilities.com/Rebates)



## Inland Valley Farms

### **Arnott Farms**

(909) 389-9600, [www.arnottfarms.com](http://www.arnottfarms.com)  
[sales@arnottfarms.com](mailto:sales@arnottfarms.com)  
Monday - Saturday • 7 am - 5:30 pm  
9151 Greenspot Rd., Mentone, California 92359  
Oranges, eggs, nuts, honey and avocados in season.

### **Drake Family Farms**

(909) 548-4628, [www.drakefamilyfarms.com](http://www.drakefamilyfarms.com)  
[orders@drakefamilyfarms.com](mailto:orders@drakefamilyfarms.com)  
7255 Schaefer Ave, Ontario, CA 91762  
Goat cheese. Sold at the Downtown Riverside Farmers Market and on the website.

### **Fox Farm**

Scott Berndt, (951) 452-6840  
[Berndtsplants@gmail.com](mailto:Berndtsplants@gmail.com)  
<http://berndtsplants.blogspot.com/>  
3636 Rosewood Pl., Riverside, CA 92506  
Urban Farm: fruit, vegetables and eggs

### **Gless Ranch**

(951) 653-5991, [www.glessranch.com](http://www.glessranch.com)  
[info@glessranch.com](mailto:info@glessranch.com)  
18541 Van Buren Blvd., Riverside, CA 92508  
(See farmstands on pg 7)

### **Gold Nugget Ranch**

Paul and Cathy Wahlstrom, (951) 347-6650  
[Cdwgnr97@gmail.com](mailto:Cdwgnr97@gmail.com)  
1775 Jackson St., Riverside, CA 92504  
February-May  
Gold nugget mandarins, clementine and fancy.

### **Jongs Egg Ranch**

David Smith, (909) 809-2247, [David@jongs.com](mailto:David@jongs.com)  
Locally produced fresh chicken eggs, quail eggs, and organic fertilizers. Not open to the public.

### **Medina Farm**

(951) 588-8384, [Cridge123@me.com](mailto:Cridge123@me.com)  
10480 Dufferin Ave., Riverside, CA 92503  
(See Farmstands page 7)

### **The Grove**

Deborah Ghamlouch, (626) 786-4068  
[Thegrovemail@yahoo.com](mailto:Thegrovemail@yahoo.com)  
FB: [The-Grove-Organic-Family-Farm-](https://www.facebook.com/The-Grove-Organic-Family-Farm-)  
Organic citrus & avocados, honey from local bees, compost. Sells to grocery stores, restaurants, farmers markets.

### **Gaytan Family Farm**

(951) 660-5645, Facebook: [Gaytan Family Farm](https://www.facebook.com/Gaytan-Family-Farm/)  
Sells at farmers' markets

### **Macala Orchards**

Nina Morton, (951) 898-8384  
[www.macalacompanies.com](http://www.macalacompanies.com)  
160 W. Foothill Pkwy. #105-150, Corona, CA  
Pomegranates, olives, fruit, herbs, Olive oil, tea, jams and jellies. Available at some local retailers and online. Open for special events, see facebook for more information.

### **Rainbow Fresh Sales**

(951) 977-8015  
2650 Gratton St. Riverside, CA 92504  
Large variety of mushrooms

## Calling All Farmers: Sell to the Food Hub

The Food Hub of Riverside Unified School District (RUSD) is looking to purchase locally-grown produce, eggs, meat, dairy, and other agricultural products from farmers who grow fresh fruits and vegetables. The purpose of the food hub is to provide marketing and distribution support for local farmers by using RUSD's existing infrastructure, coolers, warehouse, and delivery trucks.

The RUSD Food Hub was launched as a pilot with a CA Department of Food and Agriculture Specialty Crop Block Grant in 2017. In under one year, the food hub was able to demonstrate proof of concept and grow sales by serving smaller school districts, child care centers and local restaurants. In 2018, the RUSD Food Hub was awarded a USDA Local Food Promotions Program grant to incubate the food hub as well as provide funding to support food safety and GAP (good agricultural practices) training for regional farmers. The RUSD Food Hub anticipates purchasing more than \$1 million of locally grown produce over the next few years.

**Please contact Scott Berndt at (951) 452-6840 for more information or to become a vendor.**



**Farm food safety has become an important concern. RUSD is providing food safety training for farmers, thanks to funding from the USDA.**

# FARMS

## Conservation and Sustainable Agriculture Resources

### What Is Sustainable Agriculture?

In relation to natural resources, sustainability simply means that our resources will last forever, being neither depleted nor damaged.

*Sustainable* describes a system that maintains productivity indefinitely. Farmers use a variety of planting and tillage methods to build soil productivity, control pests, and create a high level of diversity, called *biodiversity*.

Sustainable agriculture includes:

- farming practices that conserve water and energy, support wildlife, and build soil health
- use of natural processes, such as nature-based pest control methods and composting of farm waste
- selling locally for the economic vitality of the community and for reduced product transportation costs and related pollutants.

Diversified farms are more resilient to pests, weather extremes, and market conditions.

### USDA Natural Resources Conservation Service (NRCS)

The NRCS field offices assist farmers with onsite technical assistance to help conserve natural resources. Request information about Best Management Practices (BMPs) for on-farm erosion control, irrigation, and other conservation practices. Begin applications and conservation planning for the Environmental Quality Incentives Program (EQIP).

The Environmental Quality Incentives Program (EQIP) provides financial and technical assistance to agricultural producers for conservation practices that improve soil, water, plant, animal, air and related natural resources on agricultural land. For example: EQIP can provide cost sharing for conversion to low volume irrigation systems.

#### Western Riverside County NRCS

Robert S. Hewitt, District Conservationist,  
(951) 654-7139  
950 Ramona Blvd., Suite 6, San Jacinto, CA 92582

#### Western San Bernardino County NRCS

Tomas Aguilar-Campos, District Conservationist,  
(909) 283-7782  
25864 Business Center Dr., Ste. K, Redlands, CA 92374

#### EQIP Program

[www.nrcs.usda.gov/wps/portal/nrcs/site/ca/home](http://www.nrcs.usda.gov/wps/portal/nrcs/site/ca/home)

#### Organic Farming

[www.nrcs.usda.gov/wps/portal/nrcs/main/national/landuse/crops/organic](http://www.nrcs.usda.gov/wps/portal/nrcs/main/national/landuse/crops/organic)

#### National Organics Program (NOP)

[www.ams.usda.gov/about-ams/programs-offices/national-organic-program](http://www.ams.usda.gov/about-ams/programs-offices/national-organic-program)

## Want to Save Money and a Precious Resource?

A free evaluation of your outdoor irrigation system will help you save **WATER!**

The Riverside-Corona Resource Conservation District (RCRCD) helps property owners who are interested in conserving their natural resources. Farmers, homeowners, and businesses of the greater Riverside area may sign up for free irrigation evaluations or other resource information. Evaluations are provided for all types of landscapes and agriculture that utilize any type of irrigation system.



For more information or to request an evaluation, please contact:  
Jose Iniguez (951) 683-7691 (Ext. 208), [iniguez@rcrcd.org](mailto:iniguez@rcrcd.org) or  
Kerwin Russell at [russell@rcrcd.org](mailto:russell@rcrcd.org).

**RCRCD**

RIVERSIDE-CORONA RESOURCE CONSERVATION DISTRICT

[www.RCRCd.org](http://www.RCRCd.org)

©RIVERSIDE-CORONA RCD. ALL RIGHTS RESERVED PHOTO BY KERWIN RUSSELL



## What is a Conservation Plan?

A Conservation Plan is a record of a land user's decisions about what practices will be used to sustain resources. Conservation practices might include cover crops, mulch, crop rotation, conservation (reduced) tillage, field borders of hedgerows, etc. The USDA Natural Resources Conservation Service helps landowners develop conservation plans and apply for cost-sharing as part of the EQIP program. For the free service and assistance with conservation practices, contact a NCRS District Conservationist. (See listing previous page.)

## Resource Conservation Districts

### Riverside-Corona Resource Conservation District (RCRD)

[www.rcrd.org](http://www.rcrd.org) (951) 683-7691  
4500 Glenwood Dr., Bldg A, Riverside, CA 92501  
Visit the **LandUse Learning Center** to learn about sustainable agriculture, native habitats, and urban areas. Pick up plant lists for climate appropriate crops.  
*Open Daily: 8 am - 4 pm (closed holidays)*

### Inland Empire Resource Conservation District

[www.iercd.org](http://www.iercd.org) (909) 799-7407  
25864-K Business Center Dr., Redlands, CA 92374  
Free soil testing for farmers, invasive species removal, urban ag support, conservation grants.

### San Jacinto Basin Resource Conservation District

[www.sjbrcd.org](http://www.sjbrcd.org) (951) 654-7733  
950 N. Ramona Blvd., Suite 6, San Jacinto CA 92582  
Environmental education, public outreach, soil and water conservation, habitat restoration, wildlife and habitat preservation

### Temecula-Elsinore-Anza-Murrieta Resource Conservation District

[www.teamrcd.org](http://www.teamrcd.org) (951) 387-8992  
P.O. Box 2078, Temecula, CA 92593  
Free irrigation system evaluations, crop conversion assistance.

## Resources

### Conservation Training Webinars

[www.conservationwebinars.net](http://www.conservationwebinars.net)

### National Sustainable Agriculture Coalition (NSAC)

<http://sustainableagriculture.net/>  
NSAC advocates for federal policy reform for the sustainability of food systems, natural resources, and rural communities.

### Pollinator Resource Center

[xerces.org/pollinator-resource-center/](http://xerces.org/pollinator-resource-center/)

### Sustainable Agriculture Research and Education [www.sare.org](http://www.sare.org)

### UC Sustainable Ag Research and Ed Program

[asi.ucdavis.edu/programs/sarep](http://asi.ucdavis.edu/programs/sarep)

### Organic Farmers

[www.ccof.org](http://www.ccof.org)  
(831) 423-2263, [ccof@ccof.org](mailto:ccof@ccof.org)  
2155 Delaware Ave., Ste. 160, Santa Cruz, CA 95060  
A non-profit organic certifier and trade association that has become a leader in the organic industry.

INLAND EMPIRE



**RESOURCE**  
CONSERVATION DISTRICT

**Inland Empire RCD**  
25864-K Business Center Dr.  
Redlands, CA 92374  
(909) 799-7407  
[www.iercd.org](http://www.iercd.org)



The Inland Empire RCD works to promote the understanding that "the quality of the environment determines the quality of life." We promote our natural resources through various programs including:

- FREE K-12 Conservation Ed Programs
- FREE Soil Testing/IWM for Farmers
- Invasive Species Removal
- Mitigation Programming
- Urban Agriculture Support
- Conservation Grant Opportunities



# FARMS

## Farmland Preservation

Thank you to the California Department of Conservation for being the largest supporter of the *Fresh and Local Guide*.



California  
Department of Conservation

Division of Land Resource Protection

### PROTECT YOUR LOCAL FOODSHED

We use agricultural easements to permanently protect farmland from development. Learn about our programs: Agricultural Land Mitigation & Sustainable Agricultural Lands Conservation.

[www.conservation.ca.gov/dlrp](http://www.conservation.ca.gov/dlrp)

### KEEP FARMLAND IN PRODUCTION

Williamson Act contracts provide tax relief for farmers and ranchers so they can afford to keep farming. Find out more:

[www.conservation.ca.gov/dlrp/lca](http://www.conservation.ca.gov/dlrp/lca)

### FIND FARMLAND NEAR YOU

Use our interactive map to find local farms and see how land use has changed over time.

<http://maps.conservation.ca.gov/dlrp/ciftimeseries/>



### Riverside-Corona Resource Conservation District

[www.rcrcd.org](http://www.rcrcd.org)  
Shelli Lamb, (951) 683-7691, Ext. 202, [lamb@rcrcd.org](mailto:lamb@rcrcd.org)  
Farmland and habitat preservation and restoration.

### Rivers and Land Conservancy

[www.riversandlands.org](http://www.riversandlands.org)  
Jack Easton, (951) 788-0670  
4075 Mission Inn Ave., Riverside, CA 92501  
Land preservation through fee acquisition and conservation easements.

### Citizens United for Resources and the Environment, Inc. (CURE)

Malissa Hathaway McKeith, Attorney  
(213) 300-3550, [www.curegroup.org](http://www.curegroup.org)

### American Farmland Trust

(916) 448-1064, [www.farmland.org](http://www.farmland.org)





## Farming Resources

### Find Land to Farm

Rich with citrus heritage, the City of Riverside is home to over 4,600 acres of preserved agricultural land in Arlington Heights, an area commonly called the "Greenbelt". Consistent with the rural character of the area, most of the properties within the Greenbelt are five to ten-acre parcels, each with a single-family residence. Today, an estimated one-third of the properties in the Greenbelt contain the remnants of the commercial citrus industry, and about 900 acres sit vacant in need of farmers. If you are looking to lease fallow land, please contact Joyce Jong, Riverside's Agriculture Business Development Coordinator at (951) 826-5265 or [Jjong@riversideca.gov](mailto:Jjong@riversideca.gov).



PHOTO COURTESY OF CITY OF RIVERSIDE

### CA Department of Food and Agriculture

[www.cdfa.ca.gov](http://www.cdfa.ca.gov)

### CA Citrus Threat

(800) 491-1899, [www.californiacitrusthreat.org](http://www.californiacitrusthreat.org)

### CA Department of Pesticide Regulations

[www.cdpr.ca.gov/](http://www.cdpr.ca.gov/)

### CA Agritourism

<http://sfp.ucdavis.edu/agritourism/>

Penny Leff (530) 752-7779, [paleff@ucdavis.edu](mailto:paleff@ucdavis.edu)

Marketing Regional Farms and Wineries

<http://sfp.ucdavis.edu/files/224898.pdf>

### CA Small Farm Conference

(707) 631-5029, [www.californiafarmconference.com](http://www.californiafarmconference.com)

P.O. Box 72014, Davis, CA 95617

### California Farm to Fork

[www.cafarmtofork.com](http://www.cafarmtofork.com)

Regional and seasonal foods, features local efforts, resources and a blog.

### California Farmer Marketplace

[www.cafarmermarketplace.com](http://www.cafarmermarketplace.com)

A free statewide website featuring California produce, grains, meats and other products for sale. Register as a grower or a buyer.

### Citrograph

<http://citrusresearch.org/citrograph>

### Citrus Research Board

(559) 738-0246, <http://citrusresearch.org/>

### City Farmer News

[www.cityfarmer.info](http://www.cityfarmer.info)

### City of Riverside Office of Economic Development

<http://riversideoed.com/>

Joyce Jong, (951) 826-5265,

[jjong@riversideca.gov](mailto:jjong@riversideca.gov)

3900 Main Street, Riverside, CA 92522

Help finding greenbelt farmland, local loans for irrigation, GrowRIVERSIDE, and local ag



### Cornell Small Farms Program

[smallfarms.cornell.edu](http://smallfarms.cornell.edu)

Information and assistance in all aspects of farming including startups

### FarmsReach

<http://www.farmsreach.com>

Helps small farmers to find suppliers and network with each other.

### National Young Farmers Coalition

[www.youngfarmers.org/](http://www.youngfarmers.org/)

### The Produce News

[www.theproducenews.com](http://www.theproducenews.com)

### Riverside County Ag Trail

<http://agtrail.rivco.ca.org/>

### Riverside County Agricultural Commissioner's Office

[www.rivcoag.org](http://www.rivcoag.org)

4080 Lemon St., Room 19, Basement  
PO Box 1089 Riverside, CA 92502-1089

(951) 955-3000, [agdept@co.riverside.ca.us](mailto:agdept@co.riverside.ca.us)

Ag permits, certifications, licenses, and administers county agricultural ordinances.

### Riverside Co. Economic Development Agency

(951) 955-8916, [www.rivcoeda.org](http://www.rivcoeda.org)

# FARMS

## Farming Resources

### UC Riverside, Avocado Information

[www.ucavo.ucr.edu](http://www.ucavo.ucr.edu)

### UC Riverside Ag Operations

Dr. Peggy A. Mauk, Director

(951) 827-5906 (Main), (951) 827-4274 (Direct)

<http://agops.ucr.edu>

Citrus Field Day, Avocado Day

### UC Riverside, Citrus Variety Collection

[www.citrusvariety.ucr.edu/](http://www.citrusvariety.ucr.edu/)

Tracy Kahn PhD., [Kahn@citrus.ucr.edu](mailto:Kahn@citrus.ucr.edu)

(951) 827-7360

### UC ANR Urban Agriculture Resources

[ucanr.edu/sites/UrbanAg](http://ucanr.edu/sites/UrbanAg)

### UC Agriculture & Natural Resources Catalogue

(800) 994-8849, [anrcatalog.ucanr.edu](http://anrcatalog.ucanr.edu)

### UC Integrated Pest Management Online

[www.ipm.ucdavis.edu](http://www.ipm.ucdavis.edu)

### UC Small Farm Program

[sfp.ucdavis.edu](http://sfp.ucdavis.edu)

### UC Vegetable Research & Information Center

<http://vric.ucdavis.edu/> [vric@ucdavis.edu](mailto:vric@ucdavis.edu)

Fosters appropriate research, collect and disseminate information for consumers, growers and processors in the California vegetable industry.

### USDA's Research, Education, and Economics (REE)

[www.ree.usda.gov](http://www.ree.usda.gov)

Resources from four agencies: the Agricultural Research Service (ARS), the Economic Research Service (ERS), the National Agriculture Statistical Service (NASS), and the National Institute of Food and Agriculture (NIFA).

## Training Next Generation Farmers

Over the past few years, the GrowRIVERSIDE initiative has explored ways to return agricultural vibrancy to the Greenbelt to support an emerging local food movement. A collaborative group of stakeholders is working to establish a regional beginning farmer training program.

Past GrowRIVERSIDE conferences have hosted well-known, successful urban farmers, including Will Allen and Curtis Stone. Look for upcoming ag internships, short courses, apprenticeships, and incubator farms for emerging farmers.



University of California Cooperative Extension Specialist Dr. Jeff Mitchell demonstrated soil performance with and without plant residues for farmers at a Growers' Forum in Riverside, CA.



## Farming Resources

### UC Cooperative Extension

Resources for research based education in Agriculture, 4-H youth development, Nutrition and Master Gardener programs. More info at: [ceriverside.ucanr.edu/](http://ceriverside.ucanr.edu/) and [ucanr.edu/](http://ucanr.edu/)

#### Riverside County

[ceriverside.ucanr.edu/](http://ceriverside.ucanr.edu/)  
21150 Box Springs Rd., Moreno Valley, CA 92557  
[ceriverside@ucdavis.edu](mailto:ceriverside@ucdavis.edu) (951) 683-6491

Etaferahu (Eta) Takele: Farm management economics  
(951) 683-6491, [ettakele@ucanr.edu](mailto:ettakele@ucanr.edu)

#### San Bernardino County

[cesanbernardino.ucanr.edu/](http://cesanbernardino.ucanr.edu/)  
777 East Rialto Ave., San Bernardino, CA 92415-0730  
[mgsanbern@ucanr.edu](mailto:mgsanbern@ucanr.edu) (909) 387-2182

Janet Hartin: Environmental Horticulture Advisor  
(951) 313-2023, [jshartin@ucanr.edu](mailto:jshartin@ucanr.edu)

### Cooperative Extension Advisors

Jose Aguiar: Vegetable crops & small farms  
(760) 342-2467, [jlaguiar@ucanr.edu](mailto:jlaguiar@ucanr.edu)

Carmen Gispert: Grapes  
(760) 342-2466, [cgispert@ucanr.edu](mailto:cgispert@ucanr.edu)

Sonia Rios: subtropical horticulture  
(951) 683-6491 Ext. 224, [srios@ucanr.edu](mailto:srios@ucanr.edu)

Claudia Carrasco Diaz: 4-H  
(951) 683-6491 Ext. 222, [cpdiaz@ucanr.edu](mailto:cpdiaz@ucanr.edu)

Rosas Olaiz: Master Gardener program  
(951) 683-6491 Ext. 230, [rmolaiz@ucanr.edu](mailto:rmolaiz@ucanr.edu)

Chutima Ganthavorn: Nutrition advisor  
(951) 683-6491 Ext. 223, [cganthavorn@ucanr.edu](mailto:cganthavorn@ucanr.edu)

Michael Rethwisch: Field and forage corps  
(760) 921-5064, [mdrethwisch@ucanr.edu](mailto:mdrethwisch@ucanr.edu)

### Soils Information

#### California's Soil App

[casoilresource.lawr.ucdavis.edu/soilweb-apps](http://casoilresource.lawr.ucdavis.edu/soilweb-apps)

#### Soil Health

[www.soilhealth.com](http://www.soilhealth.com)

#### USDA Soil Survey

[websoilsurvey.sc.egov.usda.gov](http://websoilsurvey.sc.egov.usda.gov)

#### Living Soil Documentary

[www.livingsoilfilm.com](http://www.livingsoilfilm.com)

### Farm Bureau

An independent, non-governmental, membership organization governed by and representing farm and ranch families for the purpose of achieving educational improvement, economic opportunity, and social advancement.

#### Riverside County

(951) 684-6732, [www.riversidecfb.com](http://www.riversidecfb.com)  
21160 Box Springs Rd., Suite #102,  
Moreno Valley, CA 92557  
[President@RiversideCFB.com](mailto:President@RiversideCFB.com)

#### San Bernadino County

(909) 875-5945, [sbfarmbureau.com](http://sbfarmbureau.com)  
PO Box 10668  
San Bernardino, CA 92423  
[sbfarmbureau@msn.com](mailto:sbfarmbureau@msn.com)



# FARMS

## Farming Resources

### Farm Services

#### **Alan A. Washburn**

Citrus Psyllid Coordinator for Riverside County  
(951) 683-2392, [alana@washburnandsons.com](mailto:alana@washburnandsons.com)  
Pick Pack-Pest control, entomology, expertise in citrus

#### **Blue Banner Company Inc.**

(951) 682-6183 Citrus packing

#### **Corona College Heights Orange and Lemon Association (CCH)**

(951) 688-1811 Citrus packing

#### **Index Fresh**

(909) 877-0999, [www.indexfresh.com](http://www.indexfresh.com)  
Avocado packing, distribution, Educational seminars.

#### **Joel Garcia**

(909) 376-0494 Orchard care

#### **Richard Zapien**

(714) 865-5364 Farm consultant

#### **R.I.T. Grove Management**

Roy I. Takeno (951) 313-3099

### Funding Sources

#### **American AgCredit**

(800) 800-4865, (909) 947-2371  
[AgLoan.com](http://AgLoan.com)

#### **Accion**

(619) 795-7250, [us.accion.org](http://us.accion.org)

#### **SlowMoney Southern California**

[slowmoney.org/local-groups/slow-money-southern-california](http://slowmoney.org/local-groups/slow-money-southern-california)

#### **USDA Farm Service Agency Riverside County**

[www.fsa.usda.gov/index](http://www.fsa.usda.gov/index)  
Desiree Houston, (760) 347-3675 Ext. 2  
81-077 Indio Blvd., Indio, CA 92201

#### **San Bernardino County**

[www.fsa.usda.gov/index](http://www.fsa.usda.gov/index)  
Rebecca Garcia, (661) 945-3142  
44811 Date Ave., Lancaster CA 93534

*Thank you American AgCredit for your support!*

AG IS OUR MIDDLE NAME

 AMERICAN AGCREDIT



We see things from the ground up, all of the small details that go into the big picture of farming.  
**Because agriculture is what we know, it's all we do.**

Call 800.800.4865 today  
or visit [AgLoan.com](http://AgLoan.com)

A part of the Farm Credit System. Equal Opportunity Lender.



## Congratulations to the Gless Ranch for 60 years!

In 1958, John J. Gless and Janet McCandless were married and together they began what today is known as Gless Ranch. John planted the couple's first orange grove by himself. In 1960 he pioneered citrus farming in the Woodcrest area on acreage that had been deemed unsuitable. By the 1970's, numerous other farmers had joined in farming citrus, that was by then flourishing in the Woodcrest area.

In 1977, John and Janet revisited an old idea: to sell by the roadside. This time their four kids would help: John S., Betsy, Jeff, and Jason began selling their oranges out of a 1974 Ford station wagon. With this start, the original "fruit stand" was born.

In addition to oranges, Gless Ranch currently farms grapefruit, tangerines, limes, lemons, dates, avocados and figs. The Gless family has also established a state of the art tree nursery where varieties of avocado and citrus trees are propagated and sold to other farmers. Gless Ranch farms the California Citrus State Historic Park, the orange trees lining scenic Victoria Avenue, and is preparing to plant a new avocado grove in the greenbelt.

Today, John and Janet are pleased to have all four of their children, as well as several grandchildren involved with the farming and operation of Gless Ranch.

After years of expanding and remodeling the first fruit stand at Van Buren Blvd. and Barton Rd., the beloved old building was renovated into the Gless Ranch Farmer's Market in 2017. It remains at the original farm stand location and offers customers the freshest citrus, many varieties of locally grown fruits and vegetables, craft beer, wine, specialty items, local artisan foods and gifts.



**John and Janet Gless with a vintage tractor at the ranch**



**Prior Gless Ranch farmstand**



**Present day Gless Ranch Farmer's Market**

# MAP INDEX

(for map pages 24 and 25)

## Farmers' Markets (listings on pages 5 & 6)

- 1 Canyon Lake Farmers' Market
- 2 Corona Farmers' Market
- 3 Rubidoux Farmers' Market
- 4 Valley Patch Farmers' Market
- 5 Moreno Valley Farmers' Market
- 6 Murrieta Farmers' Market
- 7 Norco Farmers' Market
- 8 Nuevo Farmers Market
- 9 County Circle Farmers' Market
- 10 County of Riverside Farmers' Market
- 11 Downtown Farmers' Market on Main Street
- 12 Galleria at Tyler Farmers' Market
- 13 Kaiser Permanente Farmers' Market
- 14 San Jacinto Valley Farmers' Market
- 15 Old Town Temecula Farmers' Market
- 16 Promenade Temecula Farmers' Market
- 17 Vail Headquarters Farmers' Market
- 18 Chino Hills Certified Farmers' Market
- 19 Arrowhead Medical Center Farmers' Market
- 20 Kaiser Permanente Fontana Farmers' Market
- 21 Loma Linda Farmers' Market
- 22 Kaiser Permanente Farmers' Market
- 23 Terra Vista Town Ctr. Farmers' Market
- 24 Victoria Gardens Farmers' Market
- 25 Redlands Market Night
- 26 Redlands Saturday Farmers' Market
- 27 Farmers' Market at the Grove School
- 28 Rialto Farmers' Market
- 29 Perris Hill Park Farmers' Market
- 30 Yucaipa Farmers' Market

## Farm Stands (listings on pages 7 & 8)

- 31 Corona Farm
- 32 Doughty Apiaries
- 33 Garcia Produce
- 34 Gless Ranch Market/Fruit Stand (2 locations)
- 35 Gloria's Nursery
- 36 GoneStraw Farms
- 37 Medina Farm
- 38 R.S. Farms
- 39 The Farm
- 40 Sky Farm Organics

- 41 Washburn Ranch Fruit Stand
- 42 Adams Acres
- 43 Arnott Farms
- 44 Farquhar Farms
- 45 Garcia Ranch
- 46 Jacinto Farms (2 locations)
- 47 Mom's Country Orchards
- 48 Nicolson's Strawberries
- 49 Rojo Farms
- 50 Soffel Farms
- 79 Sage Market Farm

## Community Gardens (listings on page 28)

- 51 Community Garden at Peace Lutheran
- 52 Highland's Giving Garden
- 53 Huerta Del Valle (2 locations)
- 54 Incredible Edible Community Garden
- 55 Pomona College Organic Farm
- 56 Root 66 Community Garden
- 57 Arlanza
- 58 Eastside
- 59 Community Settlement Association
- 60 Madison Street Church
- 61 RCC Community Garden
- 62 Tequesquite at Bonaminio Park
- 63 UC Riverside R'Garden

## Agritourism Sites (listings on pages 40 & 41)

- 64 123 Organic Farm
- 65 Amy's Farm
- 66 Greenspot Farms
- 67 California Citrus State Historic Park
- 68 Guldseth Cherry Orchard
- 69 Live Oak Canyon Adventure Farm
- 70 Mr. Joe's Farm
- 71 Peltzer Pumpkin Farm
- 72 Los Rios Rancho
- 73 Riley's Farm
- 74 Snow-Line Orchard
- 75 Willowbrook Apple Farm
- 76 Tom's Farms
- 77 Wickerd Farm
- 78 LandUse Learning Center at RCRC



## Natural Pest Control

*Biological control* is a method of suppressing pests using natural enemies. Helpful predators include some kinds of bugs, lizards, birds of prey, bats, and larger mammals, such as coyotes and bobcats.

Spiders and “beneficial” insects move into crops to prey on pests, including aphids, scales, and spider mites. Conservation practices, such as cover crops and hedgerows at field borders provide habitat for helpful creatures that suppress pests.



Hoverfly



Ladybug larvae  
Spotted Ladybird beetle



Decollate snail



American Kestrel  
*Falco sparverius*

Farmers place raptor nest boxes above their fields to help build the population of Barn Owls and Kestrels. You can see kestrel boxes in Temecula's vineyards.



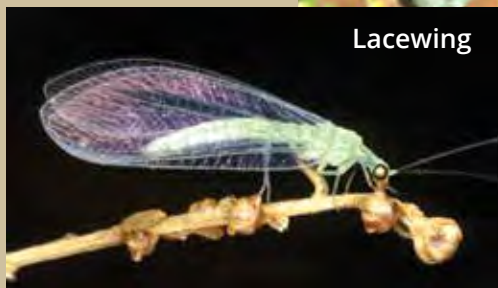
Assassin Bug eating  
a Glassy-winged  
Sharpshooter



Orb spider



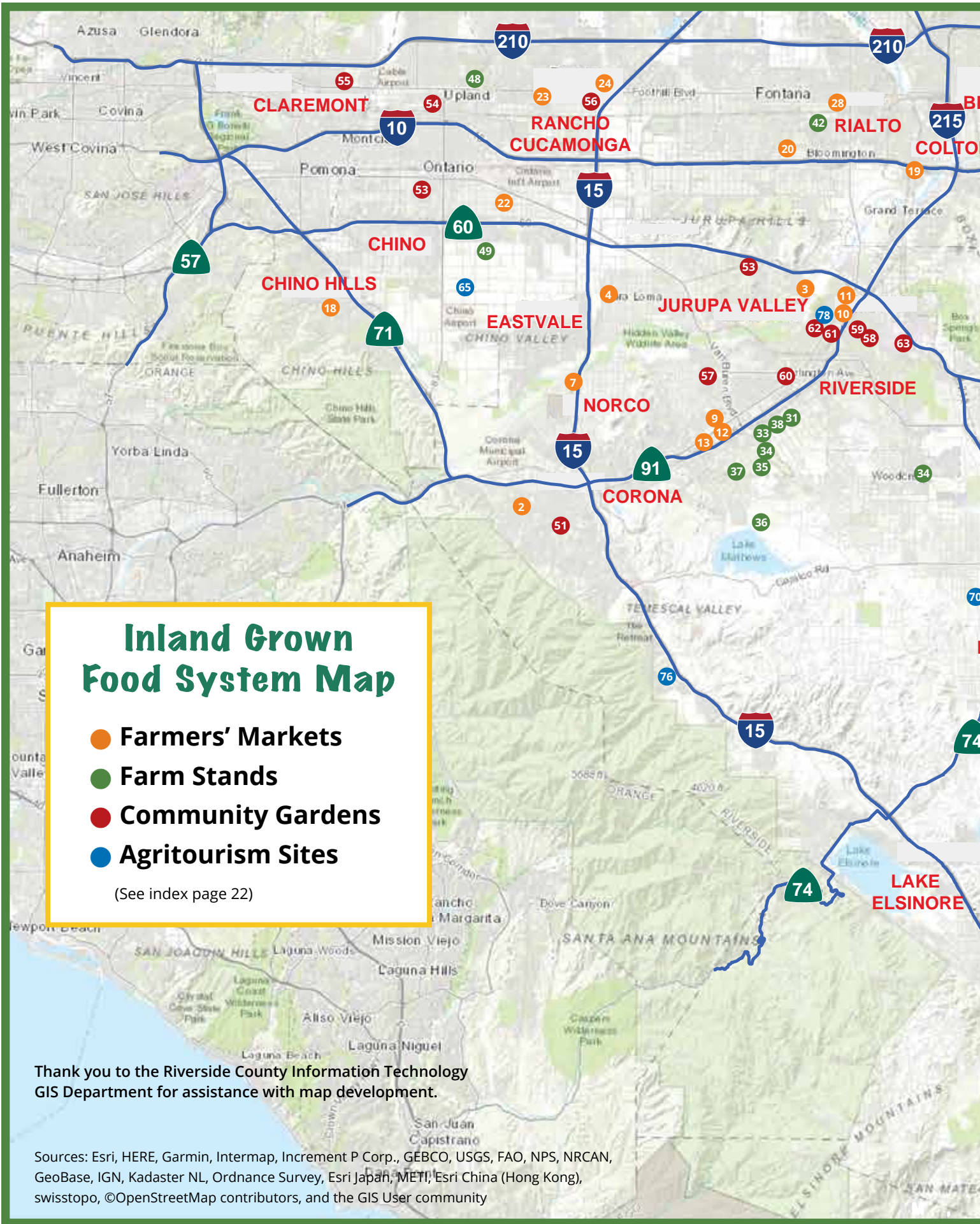
Tree frog



Lacewing

Insect photos: ©U.C. Riverside Department of Entomology  
Tree frog and orb spider photos courtesy of Susan Sims





## Inland Grown Food System Map

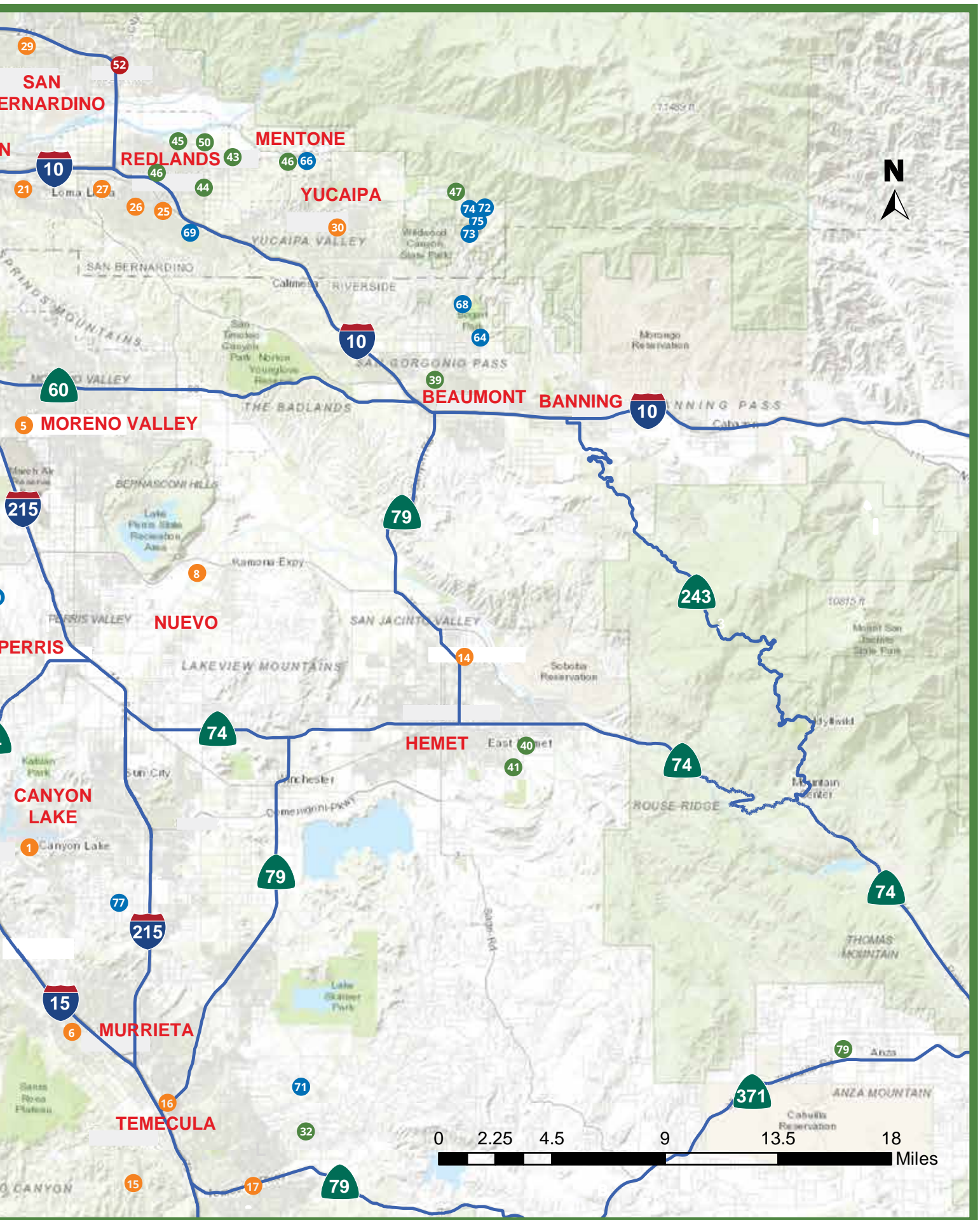
- Farmers' Markets
- Farm Stands
- Community Gardens
- Agritourism Sites

(See index page 22)

Thank you to the Riverside County Information Technology GIS Department for assistance with map development.

Sources: Esri, HERE, Garmin, Intermap, Increment P Corp., GEBCO, USGS, FAO, NPS, NRCAN, GeoBase, IGN, Kadaster NL, Ordnance Survey, Esri Japan, METI, Esri China (Hong Kong), swisstopo, ©OpenStreetMap contributors, and the GIS User community





# RESOURCES

## Community Gardens

**51 Community Garden at Peace Lutheran**

280 E. Ontario Ave., Corona  
(951) 264-2757  
Mike Bates: [bateshotel4@gmail.com](mailto:bateshotel4@gmail.com)  
[www.peacelutherancorona.org/community-garden](http://www.peacelutherancorona.org/community-garden)

**52 Highland's Giving Garden**

3606 Atlantic Ave., Highland  
(909) 518-5056  
[highlandsgivinggarden@gmail.com](mailto:highlandsgivinggarden@gmail.com)  
[www.highlandsgivinggarden.org](http://www.highlandsgivinggarden.org)

**53 Huerta Del Valle (2 locations)**

831 E. Belmont St., Ontario  
7701 Mission Blvd., Jurupa Valley  
(909) 347-2860 [info@huertadelvalle.org](mailto:info@huertadelvalle.org)  
[www.huertadelvalle.org](http://www.huertadelvalle.org)

**54 Incredible Edible Community Garden**

800 W. Arrow Hwy., Upland  
(inside Pacific Christian Center)  
Mary Petit: (941) 276-1150  
[TheIECG@gmail.com](mailto:TheIECG@gmail.com)  
[www.iecgarden.org](http://www.iecgarden.org)

**55 Pomona College Organic Farm**

First St. and Mills Ave., Claremont (see map on website for directions)  
(909) 607-8341 [farmmanager@pomona.edu](mailto:farmmanager@pomona.edu)  
[farm.pomona.edu](http://farm.pomona.edu)

**56 Root 66 Community Garden**

(909) 946-6092  
[root66garden.weebly.com](http://root66garden.weebly.com)



**BRING BACK  
THE  
POLLINATORS**  
A Xerces Society Conservation Campaign

### Key Threats to Pollinators

Native bees, butterflies, and other pollinators face many threats including habitat loss, disease, pesticide use, and climate change.

Bumble bees are at special risk, because unlike honeybees, which have large perennial hives with greater than 10,000 individuals, bumble bees produce smaller annual colonies (50-1,500 individuals). Due to their population sizes, life cycle, and genetic makeup, they are uniquely susceptible to extinction.

**Learn about how you can reduce impacts on pollinators at:**  
<http://www.xerces.org/bringbackthepollinators/>

PHOTO BY WENDY WALKER



# RESOURCES

## Grow with Us!

Whether you want to get closer to nature, grow food, meet your neighbors, beautify your neighborhood, or any of the many reasons to participate in or start a community garden, the Riverside Garden Council (RGC) wants to help. Since 2010, RGC has gathered gardeners and enthusiasts together for mutual support, advice, and to brainstorm new ways to spread the benefits of community gardening.

Follow our mission to strengthen Riverside communities by building a garden network for living healthy, active lives growing fresh food. Contact the Riverside Garden Council and join our activities. Dig Riverside. As we look ahead to long summer days, remember at the end of the day, gardening is about deep roots. To quote author Anne Raver, "Gardens, scholars say, are the first sign of commitment to a community. When people plant corn they are saying: "Let's stay here. And by their connection to the land, they are connected to one another."



Join us at our monthly meeting: every third Monday of the month, 6:30 PM at Riverside Community College Alumni House, 3564 Ramona Dr.

Contact us at [riversidegardencouncil@gmail.com](mailto:riversidegardencouncil@gmail.com). To learn about upcoming events, like our Facebook page at <https://www.facebook.com/RiversideCommunityGardens>

**57 Arlanza**

8700 Cypress Ave. at Challen Ave., Riverside  
[growarlanza@gmail.com](mailto:growarlanza@gmail.com)  
(951) 732-7509

**58 Eastside**

4660 Ottawa Ave., Riverside (behind Emerson)  
[jcburk@pacbell.net](mailto:jcburk@pacbell.net)  
(951) 212-7229

**59 Community Settlement Association**

4366 Bermuda Ave., Riverside  
(951) 686-6266

**60 Madison Street Church**

3991 Madison St., Riverside (behind church)  
[commonGood.riverside@gmail.com](mailto:commonGood.riverside@gmail.com)  
(951) 687-0557

**61 RCC Community Garden**

4800 Magnolia Ave., Riverside (So. of Digital Library)  
[Tonya.Huff@rcc.edu](mailto:Tonya.Huff@rcc.edu)  
(951) 222-8180

**62 Tequesquite at Bonaminio Park**

5000 Tequesquite Ave., Riverside  
[jcburk@pacbell.net](mailto:jcburk@pacbell.net)  
(951) 212-7229

**63 UC Riverside R'Garden**

Martin Luther King Blvd., Riverside  
(entry at Canyon Crest Dr., edge of parking lot 30)  
[rgarden.ucr.edu](http://rgarden.ucr.edu), [rgarden@ucr.edu](mailto:rgarden@ucr.edu)  
(951) 827-4271

(213) 300-3550  
[MalissaCurePres@Gmail.com](mailto:MalissaCurePres@Gmail.com)  
[www.CureGroup.org](http://www.CureGroup.org)

**CURE**

CURE cares how government decisions affect the environment, economy and your safety. Together we can demand more accountability.

**Citizens United for Resources and the Environment, Inc.**  
*A proud supporter of Grow Riverside and RFSA*

*Thank you CURE for supporting our local food system!*

# RESOURCES

## Gardening Resources

### Bee Rooted Honeybee Removal

(909) 660-3072, [beerootedbees@gmail.com](mailto:beerootedbees@gmail.com)

Ethical, humane live bee swarm and hive removal services. Also hive rental services for crop pollination.

### CA Rare Fruit Growers - Inland Empire Chapter

<https://crfg.org/home/chapters/california/inland-empire/>

### Master Gardeners, University of California Cooperative Extension (Riverside County) Greater Riverside Area

Helpline: (951) 683-6491 Ext 231

[anrmgriverside@ucanr.edu](mailto:anrmgriverside@ucanr.edu)

<http://ucanr.edu/sites/RiversideMG/>

### San Bernardino County Area

Helpline: (909) 387-2182

[mgsanbern@ucanr.edu](mailto:mgsanbern@ucanr.edu)

<http://cesanbernardino.ucanr.edu/>

### Master Composters, Riverside County Department of Waste Resources

(951) 486-3200

<http://www.rcwaste.org/composting/how>

### Riverside Garden Council and Community Gardens

Facebook: [Riverside Garden Council](https://www.facebook.com/RiversideGardenCouncil)

[Riversidegardencouncil.org](http://Riversidegardencouncil.org)



### UC Agriculture and Natural Resources Catalog

<http://anrcatalog.ucanr.edu/> (800) 994-8849

Tried and True or Something New? Selected Citrus Varieties for the Home Gardener

<https://anrcatalog.ucanr.edu/Details.aspx?item No=8472>

### California Garden Web

<http://cagardenweb.ucanr.edu>

## Compost, Organic Fertilizers, and Reuse

### Jongs Organic Fertilizers

David Smith, (909) 809-2247, [David@jongs.com](mailto:David@jongs.com)

### We Compost

John Craig, (330) 703-4765, [wecompost2@gmail.com](mailto:wecompost2@gmail.com)

280 E. Ontario Ave., Corona

Worms and castings, composting and vermicomposting demonstrations

### Burrtec

1830 Agua Mansa Rd., Riverside

(951) 786-0544

Mulch, compost, wood chips, soil amendments.

[www.burrtec.com/organic-and-food](http://www.burrtec.com/organic-and-food)



### Chino Basin Water Conservation District

4594 San Bernardino St., Montclair

(909) 626-2711

Free mulch and compost first and third Saturdays

8:30 -11:30 am. No commercial landscapers.

[cbwcd.org/197/Mulch-Giveaways](http://cbwcd.org/197/Mulch-Giveaways)

### Riverside County Department of Waste Resources

(951) 486-3200

<http://www.rcwaste.org/vermicomposting>

Vermicomposting classes and information

<http://www.rcwaste.org/composting/bins>

Free composting classes and low cost compost bins, also free DIY plans to build a bin

*Thank you, Burrtec for your support!*

 **BURRTEC**  
"We'll Take Care Of It"

**"Proud Supporter of the Riverside Food Systems Alliance"**

Contact Burrtec for more information on available landscape products.

**1-888-BURRTEC** **Burrtec.com**



## Seed Libraries

A Seed Library is a collaborative space for sharing seeds and keeping custody of traditional knowledge about saving seeds.

### San Bernardino County Seed Library

Chino Basin Water Conservation District  
4594 San Bernardino St., Montclair, CA 91763  
[www.cbwcd.org](http://www.cbwcd.org)

### Riverside Seed Library

LandUse Learning Center  
4500 Glenwood Drive, Riverside, CA 92501  
Friday - Sunday 8 am - 5 pm  
[www.riversidegardencouncil.org](http://www.riversidegardencouncil.org)  
In Riverside, the public can borrow heirloom and heritage varieties to raise fruits, vegetables, flowers or herbs. Let some plants "go to seed," then return what was borrowed to the library. Help cultivate local food security, build a clean and reproducible seed stock, create a common trust, and encourage gardening at any skill level.



WE HAVE A SAYING AROUND HERE

# Every Acre Counts

The Urban Agriculture Conservation Grant Initiative is one of many ways the National Association of Conservation Districts is advancing voluntary conservation in food insecure communities.

Thank you to NACD and partner USDA for supporting Riverside-Corona and Inland Empire Resource Conservation Districts with Urban Ag Conservation Grants.



# RESOURCES

## Keep Me Wild

**Wild animals don't need your handouts: they need your respect.**

Coyotes play an important role in the ecosystem, helping to keep rodent populations under control. They naturally fear humans and keep their distance – so long as they remain fully wild.

You may not realize it, but a simple bag of garbage, bowl of pet food, or plate of leftovers left outside your home or vacation site can cause harm to wildlife.

**Stash your food and trash**



### CA Department of Fish and Wildlife

[www.wildlife.ca.gov/Keep-Me-Wild](http://www.wildlife.ca.gov/Keep-Me-Wild)

#### Coyote Cacher

<https://ucanr.edu/sites/CoyoteCacher/>

See where coyotes have been sighted in your area and report sightings.

### Living on the Edge of the Urban-Wildland Interface

<https://www.rcrcd.com/uploads/files/LivingOnTheEdge.pdf>

Learn about reducing impacts on wildlife and protecting your human habitat.

#### Urban Coyote Initiative

<https://urbancoyoteinitiative.com/>

## Homeowners-- Help Save Citrus!

If you are a resident with citrus trees on your property, California needs your help. Look for the Asian Citrus Psyllid (ACP), an invasive pest that can carry and spread an incurable plant disease that kills citrus trees.

The pest is of grave concern because it can carry the disease Huanglongbing (HLB). HLB is one of the most serious citrus plant diseases in the world, and it is now a serious threat to the U.S. citrus industry because it greatly reduces production, destroys the economic value of fruit and eventually kills trees. The disease has already infected more than 900 citrus trees across Southern California, including a few in Riverside County. Although the disease poses no threat to humans or animals, it has devastated citrus crops in Florida, Asia, Africa, the Arabian Peninsula and Brazil.

Once a tree is infected, there is no cure. Infected trees produce fruit that are green, misshapen, bitter, and unsuitable for sale as fresh fruit or for juice. Most infected trees die within a few years. Once the Asian citrus psyllid picks up the disease, it carries it for the rest of its life. Moving infected plant material, such as potted plants, budwood and leaves, can spread HLB.

ACPs are most likely to be found on new shoots and flush, and the insect population increases during periods of active plant growth. Their eggs are almond-shaped and range from yellow to orange in color. See photos at <http://www.aphis.usda.gov/hungrypests/photoGallery.shtml>

If you think you may have seen the pest or need more information, please call the Pest Hotline at 1-800-491-1899 or visit [www.aphis.usda.gov/aphis/resources/pests-diseases/save-our-citrus](http://www.aphis.usda.gov/aphis/resources/pests-diseases/save-our-citrus). **THANK YOU.**





## Products from Local Farms

### 123 Farm Organics

(951) 845-1151

10600 Highland Springs Ave., Beaumont, CA 92223  
[shop.123farm.com](http://shop.123farm.com)

Essential oils, candles, lotions, tea, herbs, honey, olive oil, lavender products, online or shop at the ranch.

### Bee Rooted Honeybees & Botanicals

(909) 660-3072, [beerootedbees@gmail.com](mailto:beerootedbees@gmail.com)

Facebook: *Bee Rooted Bees*

Sustainable honey and soap, also classes, children's presentations and consultation services.

### Etta Mae Gourmet

Laurie Anderson, (951) 662-4999

PO Box 344, Riverside, CA 92502

[ettamaegourmet@gmail.com](mailto:ettamaegourmet@gmail.com)

Local food artisan makes homemade jams, jellies.

### Hunneedees Baking

Deana Arellano

(951) 295-3070, [Hunneedee@gmail.com](mailto:Hunneedee@gmail.com)

Kids baking parties and education in the science of baking and food safety. Baking for weddings, dessert tables.

### The Juniper Jammery

Ann M. Richmond, (951) 202-8987

PO Box 1387, Riverside, CA 92502

[ann@randinc.com](mailto:ann@randinc.com)

Jams with no sugars or preservatives, Jojoba skin care and soap

### Ridgedale Orchard and Vineyard

(909) 393-2726, [MikeandKaren@RidgedaleOrchard.com](mailto:MikeandKaren@RidgedaleOrchard.com)

[www.ridgedaleorchard.com](http://www.ridgedaleorchard.com)

21145 Ridgedale Dr., Lake Mathews, CA 92570



Jams, Jellies, Syrups & More From Our Orchard

Grown In Lake Mathews

Customized Gift Boxes  
Delivery or Farm Pick-up

Visit [RidgedaleOrchard.com](http://RidgedaleOrchard.com)  
to place your order today.

### Cottage Food Operation Information

[www.cdph.ca.gov/Programs/CEH/DFDCS/Pages/FDBPrograms/FoodSafetyProgram/CottageFoodOperations.aspx](http://www.cdph.ca.gov/Programs/CEH/DFDCS/Pages/FDBPrograms/FoodSafetyProgram/CottageFoodOperations.aspx)

### Riverside County Department of Environmental Health

(888) 722-4234, [www.rivcoeh.org/Forms](http://www.rivcoeh.org/Forms)

### Goat Rodeo Soap

Janice Lake, (626) 826-3204, [info@goatrodeosoap.com](mailto:info@goatrodeosoap.com)

Facebook: *Goat Rodeo Soap*

Sold at downtown Riverside farmers' market.

All natural handcrafted soap from goat milk.

### Happy Hawk Farm

Isela Robles, (951) 660-1750, [iselamrobles@gmail.com](mailto:iselamrobles@gmail.com)

Organic micro-greens. Sold at downtown Riverside farmers' market.

### My Goodness

Curtis Cruz, (951) 333-9947

High quality artisan bread delivered to Riverside only. Order on Facebook: My Goodness or text by Sunday for delivery on Thursday.

### Pasturebird Poultry

(855) 4-PASTURE, [info@pasturebird.com](mailto:info@pasturebird.com)

[www.pasturebird.com](http://www.pasturebird.com)

Chicken, sausages and stock shipped frozen

### Primal Pastures

(951) 297-9933, [info@primalpastures.com](mailto:info@primalpastures.com)

[www.primalpastures.com](http://www.primalpastures.com)

Pasture raised meat, tours, classes

### Rosemary Farms Eggs

sold at Jammin' Bread Bakery

5225 Canyon Crest Dr. #17a, Riverside

(951) 369-1869

### Take Heart Farm

[takeheartfarm.com](http://takeheartfarm.com)

Handspun wool yarn and knitted caps and scarves.

Sold through Wildknits on Etsy.

### Temecula Olive Oil Company

(866) 654-8396

[www.temeculaoliveoil.com](http://www.temeculaoliveoil.com)

Tasting rooms open daily, see website for locations.

Ranch tours 2nd and 4th Saturdays

Special events, cooking classes, farm dinners

[www.thefarmproject.com/blog/extra-virgin-olive-oil/](http://www.thefarmproject.com/blog/extra-virgin-olive-oil/)

### Temecula Valley Honey Company

(951) 533-6032, [temeculahoney@gmail.com](mailto:temeculahoney@gmail.com)

[temeculavalleyhoneycompany.com](http://temeculavalleyhoneycompany.com)

Honey, honeycomb and bee pollen.

TEMECULA  
OLIVE OIL  
COMPANY

Learn how to tell if your olive oil is truly from olives. Watch the video featuring actress Zooey Deschanel and local grower Thom Curry at: [www.thefarmproject.com/blog/extra-virgin-olive-oil](http://www.thefarmproject.com/blog/extra-virgin-olive-oil)

# RESOURCES

## Healthy Living Resources

### First 5 - Nutrition and Physical Activity Self-Assessment for Child Care (NAP SACC)

(951) 358-5311, [www.rivco-nutrition.org/Health-Promotion-Services/Nutrition-and-Physical-Activity-Self-Assessment-for-Child-Care-NAP-SACC](http://www.rivco-nutrition.org/Health-Promotion-Services/Nutrition-and-Physical-Activity-Self-Assessment-for-Child-Care-NAP-SACC)

NAP SACC is an obesity prevention program that helps child care facilities improve their nutrition and physical activity programs.

### Eastside HEALZone

[www.healthyriversidecounty.org](http://www.healthyriversidecounty.org)

The Eastside neighborhood in the City of Riverside is one of 17 Healthy Eating, Active Living (HEAL) Zones activating residents and organizations in community efforts for healthy living. Funded by Kaiser Permanente.



### Harvest of the Month

<http://harvestofthemonth.cdph.ca.gov/>

Highlights a variety of seasonal produce items grown in California, featuring free newsletters that include gardening, cooking, science, reading, and other topics.

### Nutrition Education and Obesity Prevention (NEOP)

[www.cachampionsforchange.cdph.ca.gov](http://www.cachampionsforchange.cdph.ca.gov)

NEOP is part of the statewide "Champions for Change" campaign focused in low-income communities to create environments that support fruit and vegetable consumption and physical activity.

### Nutrition and Health Promotion and the Riverside County Nutrition Action Plan (CNAP)

(951) 358-5311,

Help build healthier and more physically active communities in Riverside County.

### Riverside County Health Coalition

[www.healthyriversidecounty.org](http://www.healthyriversidecounty.org)

A collaborative committed to policy development and advocacy, environmental change, and community empowerment for healthy lifestyles.



### Kaiser Permanente Southern California

[www.community.kp.org](http://www.community.kp.org)

Wealth of information about programs and opportunities to promote healthier lifestyles and communities.

### Women, Infants & Children (WIC)

(800) 455-4942, [www.rivhero.com/](http://www.rivhero.com/)

Helps pregnant women, new mothers and young children eat well, stay healthy and be active with peer support, nutrition education and coupons for healthy foods.

If you are pregnant, have children or foster children under five and are on a limited income, you may qualify for these no cost services. Visit us on the web or give us a call.

[www.rivhero.com](http://www.rivhero.com) or call 855-RIV-HERO

THIS INSTITUTION IS AN EQUAL OPPORTUNITY PROVIDER



## Educational Resources



### California Citrus State Historic Park

9400 Dufferin Ave. (at Van Buren), Riverside  
(951) 780-6222, [www.parks.ca.gov/?page\\_id=649](http://www.parks.ca.gov/?page_id=649)  
The park and museum recapture the time when "Citrus was King", and showcase the importance of the citrus industry in southern California.

### Riverside-Corona Resource Conservation District



(951) 683-7691, [www.rcrcd.org](http://www.rcrcd.org)  
4500 Glenwood Dr., Building A, Riverside  
(at the corner of 14th St.)  
Free educational materials and mini-grants for school gardens are provided to teachers, students, and homeschooling families who reside or work within the RCRCD. Order forms: [www.rcrcd.org/#For\\_Youth](http://www.rcrcd.org/#For_Youth), or call Ext. 207.

Visit the LandUse Learning Center (see ad page 41) to learn about sustainable land management.

### Inland Empire Resource Conservation District

[www.iercd.org](http://www.iercd.org) (909) 799-7407  
25864-K Business Center Dr., Redlands, CA 92374  
Free soil testing for farmers, invasive species removal, urban ag support, conservation grants.

### 4-H Youth Development Program

[4h.ucanr.edu/](http://4h.ucanr.edu/)  
Riverside Office: (951) 683-6491 Ext. 229  
21150 Box Springs Rd., Ste. 202  
Moreno Valley, CA 92557  
Claudia Carrasco Diaz (951) 683-6491 Ext. 222

### Riverside Citizen Science

Facebook: [Riverside Citizen Science](#)



### Riverside Metropolitan Museum and Heritage House

[www.riversideca.gov/museum/](http://www.riversideca.gov/museum/)

### Riverside Unified School District (RUSD) Nutrition Services

(951) 352-6740, [riversideunified.org/cms/one.aspx?portallid=580805&pageid=951630](http://riversideunified.org/cms/one.aspx?portallid=580805&pageid=951630)

The RUSD Farm to School Program promotes healthy eating in children by increasing the availability of fruits and vegetables in school lunches. It also provides nutrition education to increase knowledge of, and improve attitudes toward eating a variety of locally grown produce.

### Environmental Education Collaborative

Riverside and San Bernardino Counties  
[www.enviroedcollaborative.com](http://www.enviroedcollaborative.com)  
Facebook: [EE Collaborative](#)

## FIELD Is Coming to the Inland Region

The Farmworker Institute of Education and Leadership Development (FIELD) was established in 1978 by Cesar Chavez to address the educational needs of the United Farm Workers (UFW) and those in under-served areas of California.



Today, FIELD programs include:

- An accredited charter high school with 30 locations in California, including Riverside
- An Environmental Conservation Corps that provides instruction in habitat restoration and recycling
- English as a Second Language (ESL) offered in partnership with several community colleges in California.

FIELD has been awarded a Career and Technical Education (CTE) grant through the California Department of Education that is funding development of programs in agriculture, alternative energy, environmental conservation, entrepreneurship and early childhood education.

FIELD's ag program will provide students with skills that are needed to become independent operators as farmers. To learn more, see [www.farmworkerinstitute.org](http://www.farmworkerinstitute.org) or contact (661) 822-4381.

**FIELD: Empowering the underserved to become self-sufficient**



# GROW RIVERSIDE

GROW LOCAL | EAT LOCAL

Riverside

## NextGen Farmer Training Program

Do you enjoy working outside? Have you ever dreamed of being your own boss? Do you want to make a difference by improving the health of our community? Do you have a strong work ethic and love to see the fruits of your labor?



## CONSIDER A CAREER IN AGRICULTURE AS A NEXT GENERATION FARMER!

Our nation is in need of new farmers to feed and keep people healthy, steward land and natural resources, and build stronger regional food economies.

Whether you have just graduated from high school, are changing careers in mid-life, or are a veteran, consider becoming a farmer. Through Riverside's NextGen Farmer Training Program, participants will learn everything about the art, science, and business of farming, with opportunities to own and operate their own farms, work outdoors, and provide locally grown products to the community. The program provides comprehensive training and mentorship over multiple years to assist new and beginning farmers become successful.

Riverside's NextGen Farmer Training program:

Stage 1: 10-month Beginning Farmer Training

Stage 2: Farm Apprenticeships

Stage 3: New & Beginning Farmer Incubation

Over a ten-month period, new farmers attend evening and weekend classes totaling more than 180 hours of

classroom and field training in six modules covering topics such as: irrigation, soil management, organic specialty crop production, crop planning, integrated pest management, food safety and GAP, greenhouse management, marketing and business development, and much more.

For those ready to take the next steps, the NextGen Farmer Training Program offers incubation of new farmers with access to subsidized land, equipment and infrastructure, market access, and mentorship to facilitate transition to independent farming. Incubatees have the opportunity to farm, growing and selling produce on a part-time or full-time basis starting on  $\frac{1}{8}$  to  $\frac{1}{4}$  acre. Riverside NextGen Farmer Training Program is offered in collaboration by the Riverside Food Systems Alliance, Farmworker Institute for Education and Leadership Development, the City of Riverside, and many others.

Learn more at [GrowRiv.com](http://GrowRiv.com)



# RESOURCES

## Educational Resources

### UC Cooperative Extension, Master Gardener Training Program

Formal training and continuing education provided to volunteers who extend research based horticultural information and sustainable gardening practices to the public.

#### Riverside County Area

[ucanr.edu/sites/RiversideMG/How\\_To\\_Become\\_A\\_Master\\_Gardener/](http://ucanr.edu/sites/RiversideMG/How_To_Become_A_Master_Gardener/)

Rosa Olaiz, (951) 683-6491 Ext. 230, [rmolaiz@ucanr.edu](mailto:rmolaiz@ucanr.edu)

#### San Bernardino County Area

<http://mgsb.ucanr.edu/>

Maggie O'Neill, (909) 387-2182, [magoneill@ucanr.edu](mailto:magoneill@ucanr.edu)

## Online Ag Ed Resources

### Citrus Experiment Station

<http://cnas.ucr.edu/about/history/ces.html>

### California Foundation for Ag in the Classroom

[learnaboutag.org/](http://learnaboutag.org/)

### Growing School Gardens

A professional learning and social network at [www.edweb.net/schoolgardens](http://www.edweb.net/schoolgardens)

### California School Garden Network

[www.csgn.org/california](http://www.csgn.org/california)

### National Gardening Association

<https://garden.org>

### Kids Gardening

[www.kidsgardening.org](http://www.kidsgardening.org)

### School Gardens and Native Plants

[www.cnps.org/cnps/grownative/school\\_gardens.php](http://www.cnps.org/cnps/grownative/school_gardens.php)

### California Farm to School Program

CA Department of Education

[www.cde.ca.gov/ls/nu/he/farmentoschool.asp](http://www.cde.ca.gov/ls/nu/he/farmentoschool.asp)

### Edible Schoolyard Project

<http://www.edibleschoolyard.org>

Connects educators around the world to build and share a K-12 edible education curriculum

### City of Riverside Urban Gardens and Food Sustainability

Interactive maps with information on the city's agriculture, food systems, and other topics

<https://riversideca.gov/it/gis/>

[UrbanGardensFoodSustainability.asp](http://UrbanGardensFoodSustainability.asp)

## Higher Education

### Cal Baptist University Food Innovation Center

[calbaptist.edu/programs/nutrition-and-food-sciences/](http://calbaptist.edu/programs/nutrition-and-food-sciences/)

### Cal Poly Pomona College of Agriculture

[www.cpp.edu/~agri/departments/index.shtml](http://www.cpp.edu/~agri/departments/index.shtml)

### Archi's Institute for Sustainable Agriculture with Cal Poly Pomona

<https://archisinstitute.com/>

### Environmental Leadership Academy

(760)750-3020, [www.csusm.edu/temecula/certificateprograms/eli/education\\_training/index.html](http://www.csusm.edu/temecula/certificateprograms/eli/education_training/index.html)

### Riverside Community College

Culinary Academy: <http://rcc.edu/departments/careertech/appliedtech/Pages/Culinary.aspx>

RCC Urban Farm: Facebook Community Garden RCC (951) 328-3663

### Pomona College Organic Farm

(909) 607-8341 [farm@pomona.edu](mailto:farm@pomona.edu)  
[farm.pomona.edu](http://farm.pomona.edu)

### UCR Sustainability

[Sustainability.ucr.edu](http://Sustainability.ucr.edu)

(951) 827-6558, [sustainability@ucr.edu](mailto:sustainability@ucr.edu)

### University of California Global Food Initiative

[universityofcalifornia.edu/global-food-initiative](http://universityofcalifornia.edu/global-food-initiative)

### UCR California Agriculture and Food Enterprise (CAFE)

<http://cafe.ucr.edu/>

## Low Cost Soil and Irrigation-Water Testing

If you suspect that your soil may be causing poor plant growth, consider having your soil analyzed. Soil tests reveal chemical problems that are invisible to the eye, except when plants are dying or sickly.

The Riverside-Corona Resource Conservation District (RCRCD) provides low-cost soil and water testing for **private landowners** and **homeowners**.

For information: (951) 683-7691 Ext: 223 or [http://www.rcrcd.com/uploads/files/SoilWaterQualityBrochure\\_single\\_web.pdf](http://www.rcrcd.com/uploads/files/SoilWaterQualityBrochure_single_web.pdf)



IMPROVE YOUR SOIL!

# RESOURCES

## Food Donation

### Our Lady of Perpetual Help Catholic Church Food Pantry

5250 Central Ave, Riverside, (Central & Streefer),  
(951) 687-8146  
Weekdays 9 - 11:30 am, Has refrigerators, call for after  
hours deliveries

### Arlington Temporary Assistance - Food Pantry

9000 Arlington Ave., Riverside, (951) 689-5620  
Hours: Mon, Wed 11 am - 4 pm Tues, Thurs 10 am - 1 pm  
Has refrigerators and freezers.

### Community Settlement - Food Pantry

4366 Bermuda Ave., Riverside, CA  
(951) 686-6266  
Donations accepted Mon and Wed 8 - 11 am

### Feeding America Riverside/San Bernardino

2950 Jefferson St., Suite B, Riverside  
(951) 359-4757, [www.feedingamerica.org](http://www.feedingamerica.org)  
Food distribution to non-profits. Has refrigerators and  
freezers. Call to arrange donation delivery.

### First Congregational Church Project Food

3504 Mission Inn Ave., Riverside  
[fcc.projectfood@gmail.com](mailto:fcc.projectfood@gmail.com) or (951) 858-1346  
Wednesdays after 3 pm

### Arlington Seventh Day Adventist -Food Pantry

8778 Magnolia Ave, Riverside, (951) 688-6630  
5 day supply\_1x per month\_5x per year

### Kansas Avenue Seventh Day Adventist -Food Pantry

4491 Kansas Ave., Riverside, (951) 682-9810

### Queen of Angels Church

4824 Jones Ave. , Riverside (951) 689-3674 x 223  
Accepts donations weekdays, call to arrange delivery.

### Riverside City Mission

26200 Date St., Highland  
Ken Keener, (909) 322-8572  
Tues - Sat, 8 am - 2 pm, please call before delivery.

### Second Baptist Church

2911 Ninth St., Riverside (951) 684-7532  
Contact Kathy Price weekdays 8:30 am - 4 pm

### Helping Hands Pantry Warehouse

2205 S. Artesia St., San Bernardino  
[helpinghandspantry.org/donate/](http://helpinghandspantry.org/donate/)  
Sun, Mon, Fri. 8 am - Noon  
Tues, Weds, Thurs. 8 am - 3:30 pm  
Also accepts used clothing and blankets in good repair.



**GLEANERS  
FOR GOOD**

**OUR HANDS, YOUR HEART**



**1 You call or email.**  
Share the extra fruit and vegetable bounty of your backyard!

**2 We collect.**  
Our volunteers gather the produce from your home.

**3 We deliver.**  
We drop your donations at Feeding America or other local food banks.

[Be a volunteer! Help with your community's hunger problem!]  
**(951) 290-7327**  
[riversidefoodcoop@gmail.com](mailto:riversidefoodcoop@gmail.com)

RIVERSIDE FOOD COOP RFSB

## Inland Harvest Food Donation

Inland Harvest transports surplus food donated by restaurants, cafeterias, caterers, markets, bakeries, schools, hospitals, wholesalers and retailers, as well as private individuals to already established feeding programs in the Inland Empire. It is an unique organization without a physical site. Volunteers are trained for a specific route and use their own vehicles to transport food. Assignments for routes are made by email or phone.

Inland Harvest volunteers will pick up any amount of good, nutritious food from businesses in the Inland Empire and take it directly to shelters and community food programs.

To donate food or become a volunteer, leave a message at (909) 353-7890 or email [inlandharvest1@gmail.com](mailto:inlandharvest1@gmail.com). Learn more at [www.inlandharvest.org](http://www.inlandharvest.org).



# RESOURCES

## What is a Food Rescue?

Food rescue, also called food recovery or food salvage, is the practice of gleaning edible food that would otherwise go to waste from places such as restaurants, grocery stores, or dining facilities and distributing it to local emergency food programs.



The City of Riverside and the Riverside Food Co-op (RFC) have developed new programs to divert perfectly edible food from landfills to the tables of food insecure residents. With funding from CalRecycle, RFC acquired a refrigerated van and now picks up leftover food from local restaurants, farms, caterers, and markets and redistributes the salvaged food to hunger relief organizations, including food pantries, soup kitchens, and homeless shelters. The food that RFC gathers may be frozen, fresh, or packaged.

Other benefits for participating in the Food Rescue Program include tax deductions, recognition, and waste reduction.

Do you have food that you would like to see used, rather than go to waste? Or, do you need food for a hunger relief program? If so, please contact Ana Lisa Campos or Felicia Armijo at [RiversideFoodRescue@gmail.com](mailto:RiversideFoodRescue@gmail.com) or call (951) 255-7161. Visit [riversidefoodrescue.com](http://riversidefoodrescue.com)



## Rescue Excess Food

If you are a larger food generator (e.g. restaurant, institution, farm) and would like to donate excess or extra edible food (rather than sending it to the landfill), visit [RiversideFoodRescue.com](http://RiversideFoodRescue.com) to register as a food donor and get connected with local food pantries and food banks. We'll even come pick up the food!

**For harvesting of backyard fruit (gleaning), please contact Gleaners for Good at (951) 290-7327.**

## ChowMatch

Another way to submit a request for food pick-up, or for harvesting of backyard fruit (gleaning) is through the Chow Match App. Chow Match is an electronic tool for connecting donated surplus food to local organizations.



# RESOURCES

## Food Processing and Distribution

### San Bernardino County Master Preservers

Helpline for help preserving fresh produce and food safety issues  
(909) 387-2194

### Grist and Toll

(626) 441-7400, [info@gristandtoll.com](mailto:info@gristandtoll.com)  
[www.gristandtoll.com](http://www.gristandtoll.com)  
990 S. Arroyo Pkwy. #1, Pasadena, CA 91105  
First urban flour mill in the greater LA area in over 100 years.

### Gleaners for Good

(951) 290-7327, See ad pg 36.

### Local Harvest

[www.localharvest.org/](http://www.localharvest.org/)

### Farmers Markets and Direct-to-Consumer Marketing

[www.ams.usda.gov/services/local-regional/farmers-markets-and-direct-consumer-marketing](http://www.ams.usda.gov/services/local-regional/farmers-markets-and-direct-consumer-marketing)

### Local Food Directory

[www.ams.usda.gov/services/local-regional/food-directories](http://www.ams.usda.gov/services/local-regional/food-directories)

### Know Your Farmer, Know Your Food Compass (KYF2)

[www.usda.gov/media/blog/2012/02/29/introducing-know-your-farmer-know-your-food-compass](http://www.usda.gov/media/blog/2012/02/29/introducing-know-your-farmer-know-your-food-compass)

### Inland Empire Brewers Guild

Promotes and supports local craft breweries  
[iebrewersguild.org](http://iebrewersguild.org)



**Support the local food movement!**  
(Sponsorship information on back cover)

## Small Business Resources

### Beginning Farmers Farm Business Planning

[www.beginningfarmers.org/farm-business-planning/](http://www.beginningfarmers.org/farm-business-planning/)

### Developing a Farm Business Plan

[smallfarms.cornell.edu/plan-your-farm/planning-funding-your-farm-business/sample-business-plans](http://smallfarms.cornell.edu/plan-your-farm/planning-funding-your-farm-business/sample-business-plans)

### Inland Empire Small Business Development Center

(951) 781-2345, [www.iesmallbusiness.com](http://www.iesmallbusiness.com)

### Inland Empire Women's Business Center

(909) 890-1242, [www.iewbc.org](http://www.iewbc.org)

### Inland Empire Business Counseling and Consulting Service (SCORE)

(951) 652-4350, [inlandempire.score.org](http://inlandempire.score.org)  
SCORE is a nonprofit dedicated to educating entrepreneurs and helping small businesses start, grow, and succeed: resource partner with the U.S. Small Business Administration. Free counseling, information

### Small Business Administration (SBA)

Santa Ana District Office, (714) 550-7420  
[www.sba.gov/offices/district/ca/santa-ana](http://www.sba.gov/offices/district/ca/santa-ana)





## Be a Change Agent!

The Riverside Food Rescue and Waste Reduction Ambassador program is a free, 40 hour certificate program that includes five workshops followed by a community-based project. Workshops include 20 hours of lecture with industry guest speakers, field trips, and hands-on experience. Participants also complete 20 hours of volunteer work or a project pertaining to food rescue and waste reduction. Upon successful completion of the program, new Food Ambassadors are recognized by Riverside's Mayor and City Council.

Participants engage with local experts and professionals to learn about:

- The Life Cycle of Food: From Cradle to Grave with a field trip to Burrtec's Material Recovery Facility
- Powering Healthy Soils with Food Waste Compost with hands-on composting and vermicomposting (worm bins)
- Food Rescue and Waste Reduction at home
- Composting, Technology, and Energy.

For the second half of the program, trainees complete 20 hours of community work over three months. Activities might include:

- Volunteering with Gleaners for Good
- Coordinating a neighborhood project
- Staffing GrowRIVERSIDE and other related events
- Volunteering at a food bank
- Presenting food rescue information to neighborhood groups and/or community organizations.

*For more information about the Food Ambassador Certification Program, please contact Olivia Sanchez at [OSanchez@riversideca.gov](mailto:OSanchez@riversideca.gov) or (951) 351-6174.*

The Food Rescue and Waste Prevention Ambassador program is made possible with funding from CalRecycle.



# RESOURCES

## Agritourism Adventures

*Agritourism is "a commercial enterprise at a working farm, ranch, or agricultural plant conducted for the enjoyment of visitors that generates supplemental income for the owner."*

*From the UC Small Farm Program*

<http://sfp.ucdavis.edu/agritourism/factsheets/what/>

Agritourism might include:

- Educational experiences (cannery tours, cooking classes, or wine tasting).
- Entertainment (harvest festivals or barn dances).
- Hospitality services (farm stays, guided tours or outfitter services).
- On-farm direct sales (u-pick operations or roadside stands).

### 64 123 Organic Farm

#### Highland Springs Ranch & Inn

(951) 845-1151, [www.123farm.com](http://www.123farm.com)

Open daily • 9 am - 5 pm

10600 Highland Springs Ave., Beaumont 92223  
Lavender & Olive Festivals, sheep shearing, weddings, school programs, farm camp. Tours by reservation.

### 65 Amy's Farm

(844) 426-9732, [info@amysfarm.com](mailto:info@amysfarm.com)

Open Monday-Saturday

Produce stand open 9 am - 5 pm

Farm open Noon - 2 pm weekdays • 9 am - 5 pm Sat.

7698 Eucalyptus Ave., Ontario, 91762

Non-profit, donations requested. Produce, honey, olive oil, pork and beef sold. Tours by reservation.

### 66 Greenspot Farms

(909) 794-7653, [www.greenspotfarms.com](http://www.greenspotfarms.com)

Open daily • 9 am - 6 pm

10133 Ward Way, Mentone, 92359

Farm animals, hayrides, Christmas Tree farm, Honeybees, gift shop, weddings, school tours

### 67 California Citrus State Historic Park

9400 Dufferin Ave. (at Van Buren), Riverside

(951) 780-6222 [www.parks.ca.gov/?page\\_id=649](http://www.parks.ca.gov/?page_id=649)

The park and museum recapture the time when "Citrus was King", and showcase the importance of the citrus industry in southern California.

### 68 Guldseth Cherry Orchard

(951) 845-2490, [www.guldsethcherryorchard.com](http://www.guldsethcherryorchard.com)

Farmstand open daily • 1- 5 pm, call to confirm  
9150 Whispering Pines Rd., Cherry Valley, 92223  
U-Pick cherry orchard (May-June), group tours

### 69 Live Oak Canyon Adventure Farm

(909) 795-8733, [www.liveoakcanyon.com](http://www.liveoakcanyon.com)

Open seasonally, see website or facebook page for calendar, hours and events

32335 Live Oak Canyon Rd., Redlands, CA 92373  
Gift shop, games, bounce houses, wagon rides, petting zoo, pumpkin patch (Sept/Oct), corn maze and Christmas tree farm (Dec).

### 70 Mr. Joe's Farm

(951) 657-8408

20850 Old Elsinore Rd., Perris, 92570  
Non-profit. Petting zoo, family friendly.

### 71 Peltzer Pumpkin Farm

(951) 695-1115, [www.peltzerfarms.com](http://www.peltzerfarms.com)

Open daily • 9 am - 5 pm

39925 Calle Contento, Temecula 92591  
Winery, gardens, pony rides, petting farm, school tours, private events.

### 78 Riverside-Corona Resource Conservation District

(951) 683-7691, [www.rccrd.org](http://www.rccrd.org)

4500 Glenwood Dr., Building A, Riverside  
(at the corner of 14th St.)

**Visit the LandUse Learning Center** (see ad opposite page) to learn about sustainable land management.

### Temecula Valley Wineries

(800) 801-9463 [www.temeculawines.org](http://www.temeculawines.org)

Temecula, 92593

Over 30 wineries offer tasting, tours and numerous events year-round. See website for maps, hours and event calendar.



For more listings, see the *Agricultural Tourism Directory*: [www.calagtour.org](http://www.calagtour.org)



## Agritourism Adventures

### 72 Los Rios Rancho

(909) 797-1005,  
[losriosrancho.com](http://losriosrancho.com)  
Open Daily • 10 am - 5 pm  
• U-pick weekends 9 am - 5 pm  
39610 Oak Glen Rd.,  
Oak Glen 92399  
Seasonal fruit stand  
and u-pick fruit and  
nuts. Private events and farm tours



### 73 Riley's Farm

(909) 797-7534, [info@rileysfarm.com](mailto:info@rileysfarm.com)  
Open Mon.-Sat. See website for hours: [rileysfarm.com](http://rileysfarm.com)  
12261 S. Oak Glen Rd., Oak Glen 92399  
Seasonal fruit, flowers and produce, including  
u-pick. Living history events, day camps, live  
theater, restaurant, bakery, gift shop

### 74 Snow-Line Orchard

(909) 256-0405, <https://snowlineorchard.com>  
Open Wed - Sun, 9 am - 5 pm  
39400 Oak Glen Rd., Oak Glen, 92399  
Apples, cider, winery, U-pick raspberries, donuts

### 75 Willowbrook Apple Farm

(909) 797-9484, [willowbrookapplefarm.com](http://willowbrookapplefarm.com)  
Open during Fall season, check website for dates  
12099 S. Oak Glen Rd., Yucaipa 92399  
U-pick apples and berries, cider making, gift shop,  
tours.

More Oak Glen adventures: <https://www.oakglen.net/>

### 76 Tom's Farms

(833) 833-4323 [www.tomsfarms.com](http://www.tomsfarms.com)  
23900 Temescal Canyon Rd., Corona, CA 92883  
See website for schedule and hours  
Restaurants, farmstand, shops, carousel, train  
ride, live music, kid's activities, events.

### 77 Wickerd Farm

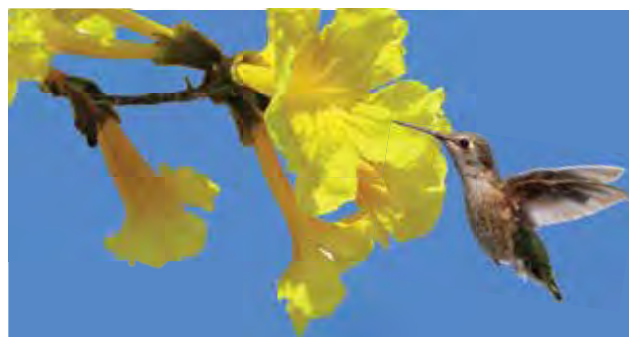
(951) 672-3020, [www.wickerdfarm.com](http://www.wickerdfarm.com)  
Mon. - Sat. • 10 am - 8 pm call to confirm  
26852 Scott Rd., Menifee, 92584  
Pumpkin patch, Christmas tree farm, hay rides,  
butterfly garden.

### Tanaka Farms

(949) 653-2100, [www.tanakafarms.com](http://www.tanakafarms.com)  
Open daily • 9 am - 5 pm  
5380 3/4 University Dr., Irvine, 92612  
Farm tours, school tours, seasonal holiday events,  
produce stand, gift shop

### Flower Fields at Carlsbad Ranch

(760) 431-0352, [www.theflowerfields.com](http://www.theflowerfields.com)  
Open daily during the season  
5704 Paseo Del Norte, Carlsbad, CA 92008  
Tours and events during the spring bloom, see  
website for dates and times



Learn about sustainable  
Agriculture, Native Habitats,  
and Urban Areas.



Riverside-Corona Resource Conservation District



Free Admission  
Open Daily • 8 am - 4 pm

(Closed Holidays)

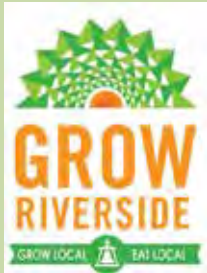
4500 Glenwood Dr., Riverside

(951) 683-7691

[rcrcd.org/#Landuse\\_Learning\\_Center](http://rcrcd.org/#Landuse_Learning_Center)

Visit the LandUse Learning Center (LLC), a 3-acre garden that demonstrates sustainable practices for the three main land uses of southern California: native habitats, urban areas, and agriculture. Learn about sustainable agriculture in the Agricultural Area, and see crops that thrive in the local climate. Plants are labelled, so pick up plant lists for each area and visit the seed library (see page 29).

# ABOUT INLAND GROWN



## What is GrowRIVERSIDE?

In 2014, the City of Riverside sponsored the first GrowRIVERSIDE Conference which drew a lot of attention to the local food movement and Riverside's rich agricultural heritage. As interest grew, the city invited community partners to monthly planning workshops. Eventually, nearly 90 participants collaborated to envision a local farm to fork food system.

The result was a Food Policy Action Plan. When the goals of the plan are realized, partners will have strengthened the economy, raised awareness about healthy living, and conserved local farmland and natural resources.

Join us in building an equitable, healthy and prosperous community in inland Southern California. Visit [GrowRIV.com](http://GrowRIV.com)



RFSA greatly appreciates the support of the City of Riverside: City Council; Innovation and Technology Department; Community and Economic Development Department; the Mayor's Office; and Riverside Public Utilities.



# ABOUT INLAND GROWN



Riverside Food Systems Alliance (RFSa) is an organization that is working to create a food system that makes healthy, local foods available for all in the inland valley region. RFSa connects organizations and removes barriers in an effort to expand access to local foods, preserve land for sustainable agriculture, and grow our inland economy.

RFSa is a public-private partnership with members from the community, government, and business. Partners that collaborate include farmers, community gardeners, restaurateurs, health and hunger organizations, economic and ag agencies, plus a food co-op.

Contact us at [info@riversidefoodsystemsalliance.org](mailto:info@riversidefoodsystemsalliance.org), or (951) 888-0646. Visit us at [riversidefoodsystemsalliance.org](http://riversidefoodsystemsalliance.org) or on Facebook.

## RFSa Goals

The Riverside Food System Alliance (RFSa) and partners are working to improve the food system in the inland Southern California region. Examples of RFSa goals and projects include:

- Pilot farmer training and incubator farms
- Farmland preservation
- Sustainable farming practices
- Building healthy soils and farm waste reuse
- Carbon capture to temper climate change
- Bringing fallow farmland back into production
- Community and school gardens
- Food rescue
- Commercial kitchens
- Food safety training
- Food hubs
- Sustainable restaurant practices
- Food security
- Equitable access to healthy, local foods
- Encouraging restaurants to use locally grown products



**RFSa: Enhancing food security by growing a resilient, productive, and sustainable local food and agricultural system in SoCal inland valleys.**

### 2019 Board of Directors

Sue Struthers, Chair – Riverside Food Co-op  
Susan Fahrney, Co-chair – Wood Streets Green Team  
Scott Berndt – Fox Farm, RUSD Food Hub  
Deborah Ghamlouch – The Grove Organic Farm  
Gayle Hoxter – Riverside University Health System  
Joyce Jong – City of Riverside: Economic Development Division  
Allison Paap – American AgCredit  
Sandra Ramirez – Consultant  
Diana Ruiz – Riverside-Corona Resource Conservation District and editor of *Fresh and Local*

### 2019 Advisory Committee

Cecilia Arias – Kaiser Permanente  
Gurumantra Khalsa – Nutrition News  
Chris MacArthur – Citrus grower  
Malissa Hathaway McKeith - Citizens United for Resources and the Environment, Inc. (CURE)  
Nick Melquiades – Riverside Garden Council  
Fortino Morales – UC Riverside  
Seth Wilson – Cutting Edge Capitol  
Dan Yuhasz – Cal Poly Pomona

# FOOD SYSTEM MILESTONES

*For nearly 150 years, agriculture has been an important component of our economy and culture, thanks to an abundance of sunshine, soil, water and innovation.*

*Start-up grants for food system partners to build local capacity:*

USDA Food Hub grant awarded to Riverside Unified School District (RUSD) for \$436K

Invest Health grant from Robert Wood Johnson Foundation awarded to City of Riverside for \$60K

Kaiser Permanente awarded \$50K to RFSa

National Association of Conservation Districts and USDA awarded a \$50K Urban Ag Conservation grant to Riverside-Corona Resource Conservation District (RCRCD)

Riverside voters passed Proposition R which preserved nearly 5,000 acres in the Arlington Heights greenbelt for agricultural uses.



The Riverside Food Co-op formed and started crop box service



Stakeholders developed a Food and Ag Policy Action Plan that was adopted by the Riverside City Council. The RFSa emerged.

1979

1987

2012

2014

2015

2016

Riverside voters passed Measure C establishing policy to promote and encourage agriculture in Riverside.



First annual GrowRIVERSIDE conference. Initiative launched.



Gleaners for Good was launched to harvest backyard fruit, which is then donated.





Riverside Garden Council became a non-profit to assist community gardens



The CA Natural Resources Agency funded a \$3M Urban Greening Grant to the City of Riverside (plus RFSA partners) for Northside Heritage Meadows, which will include an Urban Agriculture Education Center.



RFSA administered Market Match funds for local farmers' markets through the Ecology Center.

## 2017

## 2018



The local Public Relations Society of America recognized the first *Fresh & Local* guide with a Capella award.



USDA awarded \$468K to RUSD to support food hub operations.



The Inland Empire Economic Partnership recognized GrowRIVERSIDE and partners with the Sustainability and Green Development Award.



CalRecycle awarded the City of Riverside and Riverside Food Co-op \$209K to pilot three food rescue and waste prevention programs.

# ABOUT INLAND GROWN

## Three Ways You Can Help!

1. Use your “purchasing power” to support local agriculture and grow your local economy.
2. If you have a passion for helping local food communities prosper, get involved as a collaborator, volunteer, or sponsor. Please contact the Riverside Food Systems Alliance at [info@riversidefoodsystemsalliance.org](mailto:info@riversidefoodsystemsalliance.org) or Chair Sue Struthers at (951) 888-0646. The advisory committee meets the first Thursday of each month from 3-5 PM.
3. Become a RFSA sponsor or member (see form back cover).



## This is a future that needs you

It's a future where:

- neighborhoods flourish, and people share food they grow with each other and those in need
- young people start growing food and experience fresh flavors, connecting them to healthy choices over a lifetime
- active living and good nutrition reduce the incidence of degenerative diseases
- we honor our past by protecting our soils and preserving our farm lands throughout the inland SoCal region.

It's a future filled with enthusiastic farmers and hungry consumers connecting at food co-ops, sustainable restaurants, farmers markets, neighborhood growing spaces, and more.





# ABOUT INLAND GROWN



## Thank You, Sponsors!\*

**Harvest** \$7000+

California Department of Conservation  
Kaiser Permanente  
Riverside-Corona Resource Conservation District

**Farm** \$5000 - \$6,999

City of Riverside/Riverside Public Utilities

**Garden** \$2500 - \$4,999

American AgCredit

**Seedling** \$1000 - \$2,499

Riverside University Health System-WIC

**Sprout** \$500 - \$999

Burrtec Waste Industries  
Citizens United for Resources and the Environment  
Friends of Riverside's Hills  
Riverside Food Co-op

**Root** \$250 - \$499

Riverside County Farm Bureau

**Join us by being a sponsor and help build a healthy and sustainable food economy.**

### ***Special Advertising and Benefits for Community Sponsors***

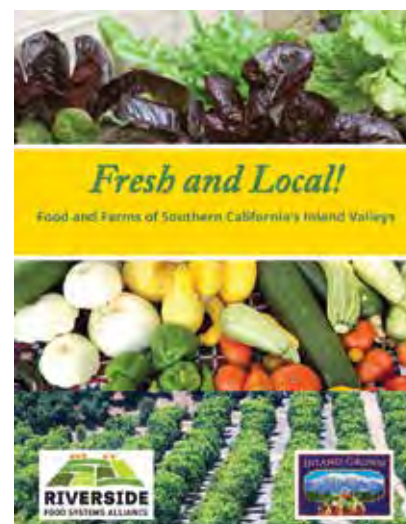
As a sponsor you will gain recognition with your ad in *Fresh and Local*, a free guide that helps consumers and restaurants connect with local growers and that highlights resources for healthy living and local growing.

Circulation: 30,000 print copies, plus via newsletters, websites, and Facebook of RFSA and numerous partners.

Print copies mailed and distributed at inland area farmers' markets, farm stands, libraries, Chambers of Commerce, health agencies, government offices, restaurants, neighborhood organizations, and to sponsors.

With sponsorship you will gain booth space and recognition with your logo at RFSA events, at GrowRIVERSIDE, on websites and via social media.

For sponsorship information: please contact Diana Ruiz at (909) 238-8338, Ruiz@RCRCD.org



(\*See sponsor ads and listings in purple throughout this publication)



**Riverside-Corona  
Resource Conservation District**

4500 Glenwood Dr., Building A  
Riverside, CA 92501  
(951) 683-7691  
(951) 683-3814 FAX  
www.rcrcd.org  
Facebook: www.facebook.com/RCRCD

NON-PROFIT  
U.S. POSTAGE  
**PAID**  
RIVERSIDE  
CALIFORNIA  
PERMIT NO. 944

The *Fresh and Local* guide was developed by the Riverside-Corona Resource Conservation District for the Riverside Food Systems Alliance and partners.



### What is the Riverside Food Systems Alliance?

RFSA is a public-private partnership that is working to make fresh, healthy, local foods available for all. The Alliance includes members from the community, government, and business.

Please help us by sharing this guide and by spreading the word about buying local. We welcome your involvement as a member, as part of a working group, or sponsor. Sponsors are provided recognition and advertising space in this guide.

**Join Us! Share in our healthy harvest.**



Name \_\_\_\_\_

Address \_\_\_\_\_

City \_\_\_\_\_ Zip \_\_\_\_\_

Phone \_\_\_\_\_ Email \_\_\_\_\_

**Join online at [riversidefoodsystemsalliance.org](http://riversidefoodsystemsalliance.org)**

#### Membership Level

- Volunteer
- Individual \$35
- Family \$50
- Limited Income \$10
- Sustaining \$100
- Business Partner \$250

Enclose with payment and mail to:  
**Riverside Food Systems Alliance  
PO Box 324, Riverside, CA 92502**

Please make checks payable to **Community Partners**, the fiscal sponsor for RFSA.

RFSA is a project of Community Partners, a Section 501(c)(3) tax-exempt organization. Your sponsorship may be deductible as a charitable contribution. Please consult with your tax advisor.

If you would like to be included in the next edition of the *Fresh and Local* Guide with an advertisement, sponsorship, or free listing (i.e.: farms, farm stands, relevant resources), please contact Diana Ruiz at [ruiz@RCRCD.org](mailto:ruiz@RCRCD.org), (909) 238-8338.

You can help prevent waste by recycling this publication or passing it on to a friend.