

# Environmental Learning Resources

for Riverside and San Bernardino Counties with Adjacent Areas



**Environmental  
Education  
Collaborative**

Striving to create a sustainable future through environmental learning experiences for all.





*Environmental Learning Resources Guide* was developed to help educators and community members find sites and programs about natural resources and sustainability. This guide provides information on programs for all ages from early childhood through adult as well as information on professional training opportunities.

This printed publication will be provided to each school in the two counties. The electronic version may be accessed on the EEC's website at <https://www.enviroedcollaborative.com/>.

*We hope this compilation of local environmental learning sites and programs will help you find resources to learn more and to help create a more sustainable future.*

# **CONTENTS**



## **Environmental Resources**

Sites and Programs	3
Online	13

## **Site Location Maps**

San Bernardino County Map Index	14
San Bernardino County Map	16-17
Riverside County Map	18-19
Riverside County Map Index	21

## **Agricultural Resources**

Gardening Resources	24
Agritourism Sites	25
Online	27

## **Professional Resources**

Training and Organizations	28
Online	29

## **About EEC**

Join Us!	31
----------	----



*Santa Ana Watershed Community Science Outpost*

*Many thanks to the sponsors of this publication.  
Find them featured in ads and listed in orange.*

# ENVIRONMENTAL RESOURCES

## SITES AND PROGRAMS

### 4-H Youth Development Program

#### Riverside County

(951) 683-6491 x229

[http://ceriverside.ucanr.edu/4-H\\_Program/](http://ceriverside.ucanr.edu/4-H_Program/)

21150 Box Springs Rd. St. 202, Moreno Valley 92557

[slbarrett@ucanr.edu](mailto:slbarrett@ucanr.edu)

#### San Bernardino County

(909) 387-2179

[http://cesanbernardino.ucanr.edu/4-H\\_Program/](http://cesanbernardino.ucanr.edu/4-H_Program/)

777 E. Rialto Ave., San Bernardino 92415

[slbarrett@ucanr.edu](mailto:slbarrett@ucanr.edu)

### Ameal Moore Nature Center/Sycamore Canyon Park

(951) 826-2596

<https://mysycamorecanyon.com/ameal-c-moore-nature-center/>

400 Central Ave., Riverside 92507

### Arrowhead Ranch Outdoor Science School

(909) 337-7265, [www.arrowheadkidscamp.com](http://www.arrowheadkidscamp.com)

480 Cottage Grove Rd., Lake Arrowhead 92352

### Audubon Society Local Chapters

#### Pomona Valley

<http://www.pomonavalleyaudubon.org/index.html>

#### San Bernardino Valley Audubon

<https://www.sbvass.net>

#### Bear Paw Sanctuary

38801 Valley of the Falls Dr., Forest Falls 92339

### Barton Flats Visitor Center

(909) 794-4861, Summer only

[https://www.fs.usda.gov/detail/sbnf/about-forest/districts/?cid=fsbdev7\\_007798](https://www.fs.usda.gov/detail/sbnf/about-forest/districts/?cid=fsbdev7_007798)

### Big Bear Discovery Center

(909) 382-2790

[www.mountainsfoundation.org/programs/discovery-center](http://www.mountainsfoundation.org/programs/discovery-center)

40971 Hwy 38/North Shore Dr., Fawnskin 92333

### Bighorn Institute

(760) 346-7334, [www.bighorninstitute.org](http://www.bighorninstitute.org)

P.O. Box 262, Palm Desert 92261-0262

### Big Morongo Canyon Preserve

(760) 363-7190, [www.bigmorongo.org](http://www.bigmorongo.org)

11055 East Dr., Morongo Valley 92256

### Cabot's Pueblo Museum

(760) 329-7610, [www.cabotsmuseum.org](http://www.cabotsmuseum.org)

67616 E. Desert View Ave., Desert Hot Springs 92240

### Calico Ghost Town

(800) 862-2542,

<http://cms.sbcounty.gov/parks/Parks/CalicoGhostTown.aspx>

366000 Ghost Town Rd., Yermo 92398

[calicotown@parks.sbcounty.gov](mailto:calicotown@parks.sbcounty.gov)

### California Native Plant Society

#### Mojave Desert Chapter

<https://www.facebook.com/mojavedesertcnps.org>

#### Riverside - San Bernardino Chapter

(760) 217-0121, <https://riverside-sanbernardino.cnps.org/>

#### Ca Native Plant Week

 Third week of April

<https://www.cnps.org/conservation/california-native-plant-week>

### California Turtle and Tortoise Club

(760) 360-3809, [www.tortoise.org](http://www.tortoise.org)

### Children's Discovery Museum of the Desert

(760) 321-0602, [www.cdmod.org](http://www.cdmod.org)

71-701 Gerald Ford Dr., Rancho Mirage 92270



ENGAGE IN A  
COMMUNITY  
APPROACH  
TO LEARNING



SUPPORT FOR EDUCATORS,  
SCHOOLS, HOME SCHOOLS,  
DISTRICTS, & NON-FORMAL  
PROGRAMS TO DEVELOP  
CULTURES THAT VALUE  
LEARNER CURIOSITY,  
CREATIVITY, INQUIRY,  
AGENCY, & ACTION.



action  
driven  
inquiry

[www.actiondriveninquiry.com](http://www.actiondriveninquiry.com)

[@INQUIRY2ACTION](#)

[ACTIONDRIVENINQUIRY](#)



# ENVIRONMENTAL RESOURCES

## SITES AND PROGRAMS (cont.)

### Chino Basin Water Conservation District Waterwise Community Center/Seed Library

(909) 626-2711, [www.cbwcd.org](http://www.cbwcd.org)

4594 San Bernardino St., Montclair 91763

### Chino Creek Wetlands and Education Park

(909) 993-1935

<https://www.ieua.org/facilities/chino-creek-wetlands-educational-park/>

15975 El Prado Road, Chino 91708

### Coachella Valley Mountains Conservancy

(760) 776-5026,

73-710 Fred Waring Dr., Suite 112, Palm Desert 92260

<http://cvmc.ca.gov>

### Coachella Valley Water District

(760) 398-2651, <http://www.cvwd.org/>

51501 Tyler St., Coachella 92236

### Coachella Valley Museum and Cultural Center

(760) 342-6651, [www.coachellavalleymuseum.org](http://www.coachellavalleymuseum.org)

82-616 Miles Ave., Indio 92202

### Coachella Valley Wild Bird Center

(760) 347-2647

46500 Van Buren St., Indio 92201

### Corona Department of Water and Power

Contact RCRCD at (951) 683-7691 ext. 226

Free K-6 classroom presentations about water

### Corona Heritage Park and Museum

(951) 898-0687, <http://coronaheritage.org/>

510 West Foothill Pkwy, Corona 92882

### Covered Wagon Tours

(760) 347-2161, [www.coveredwagontours.com](http://www.coveredwagontours.com)

La Quinta, [reservations@coveredwagontours.com](mailto:reservations@coveredwagontours.com)

### Cucamonga Valley Water District, Environmental Learning Center

(855) 654-2893, <https://www.cvwdwater.com/220/>

Environmental-Learning-Center

10440 Ashford St., Rancho Cucamonga 91730

### Desert Cities Bird Club

(760) 349-3515, [www.facebook.com/DesertCitiesBirdClub/](http://www.facebook.com/DesertCitiesBirdClub/)

70065 Sonora Rd. #267, Mountain Center 92561

## INVESTIGATE THE WONDERS OF WATERWISE LANDSCAPES WITH US!

Plan a free trip to the Waterwise Community Center



- ◊ Free & open to the public
- ◊ Gardens, parks, and paths
- ◊ Self-guided tours
- ◊ NGSS-aligned curriculum
- ◊ Discover waterwise plants & animals
- ◊ Scout Days
- ◊ Classroom visits
- ◊ Student contests

\*BUS REIMBURSEMENT FOR SCHOOLS IN OUR SERVICE AREA.



**Waterwise  
Community  
Center**

A program of the  
Chino Basin Water  
Conservation District

4594 San Bernardino Street  
Montclair, CA 91763

Open Mon.-Sat. | 8AM-5PM

Phone: 909-626-2711

Learn more: [cbwcd.org/education](http://cbwcd.org/education)

# ENVIRONMENTAL RESOURCES

## SITES AND PROGRAMS (cont.)

### Desert Discovery Center

(760) 252-6060, <http://desertdc.com/>  
831 Barstow Road, Barstow 92311

### Desert Water Agency

(760) 323-4971, [www.dwa.org](http://www.dwa.org)  
1200 S Gene Autry Trail, Palm Springs 92264  
Tours, speakers

### Diamond Valley Lake Visitors Center Western Science Center

(951) 791-0033 [www.westerncentermuseum.org](http://www.westerncentermuseum.org)  
2345 Searl Parkway, Hemet 92543

### Eastern Municipal Water District

(951) 928-3777, [www.emwd.org/education](http://www.emwd.org/education)  
2270 Trumble Rd. Perris 92570

### El Cariso Visitors Center

(951) 678-3700  
<https://www.fs.usda.gov/recarea/cleveland/recarea/?recid=70940>  
32353 Ortega Hwy, Lake Elsinore 92530

### Elsinore Valley Municipal Water District Water Education Program

(951) 674-3146  
[www.evmwd.com/about/departments/water\\_efficiency/](http://www.evmwd.com/about/departments/water_efficiency/)  
31315 Chaney St., Lake Elsinore 92530

### Emerald Cove Outdoor Science Institute

(949) 298-3267, [www.ecosinstitute.com](http://www.ecosinstitute.com)  
33325 Green Valley Lake Rd., Running Springs 92382  
[info@ECOSinstitute.com](mailto:info@ECOSinstitute.com)

### The Energy Coalition

[www.energycoalition.org](http://www.energycoalition.org), <http://peakstudents.org/>  
[ssalas@energycoalition.org](mailto:ssalas@energycoalition.org)

### Envirothon

[www.envirothon.org](http://www.envirothon.org)  
Hands-on environmental science competition for high school teams. Contact your local Resource Conservation District about sponsorship and training.

### Friends of the Desert Mountains

(760) 568-9918, [www.desertmountains.org](http://www.desertmountains.org)  
51500 Highway 74, Palm Desert 92260  
[friends@desertmountains.org](mailto:friends@desertmountains.org)  
Adopt an Acre, Wildflower Festival

## ECOS Institute

- **ECOS Institute's** outdoor education program integrates **NGSS** into its **3-, 4-, and 5-day** programs.
- Students experience **natural phenomena** to appreciate the **beauty and wonder of science**, spark **curiosity** and **inquiry**, as well as apply **real world learning** about **science**.
- **New schools** receive an **additional 5% discount** for their **first year**
- **Register by March 31** and receive a 5% discount. **No Money** is required **up front**

**Contact us to learn more or  
to schedule a presentation today!**

[ecosinstitute.com](http://ecosinstitute.com) ■ 949.298.ECOS



**Emerald Cove**  
OUTDOOR SCIENCE INSTITUTE



# ENVIRONMENTAL RESOURCES

## SITES AND PROGRAMS (cont.)

### Friends of Mojave Narrows Park

<https://friendsofmojavenarrows.org/>

### Friends of the Northern San Jacinto Valley at San Jacinto Wildlife Area

(951) 928-0580, [www.northfriends.org/sjwa.html](http://www.northfriends.org/sjwa.html)  
17050 Davis Rd., Lakeview 92567  
[northfriends@northfriends.org](mailto:northfriends@northfriends.org)

### Gilman Historic Ranch and Wagon Museum

(951) 922-9200, <https://www.rivcoparks.org>  
1901 W. Wilson St., Banning 92220

### Girl Scouts of San Gorgonio Council

(800) 400-GIRL, [www.gssgc.org](http://www.gssgc.org)  
1751 Plum Lane, Redlands 92374

### WiWoCa

3125 Pine Mesa Ct., Yucaipa 92314

### Camp Skyland Ranch

19750 CA-243, Banning 92220

### Camp Azalea Trails

21250 Dark Canyon Rd., Idyllwild 92549

### Heaps Peak Arboretum

Rim of the World Interpretive Association  
(909) 382-2790, [www.heapspeakarboretum.com](http://www.heapspeakarboretum.com)  
29358 Rim of the World Hwy #18, Skyforest 92385

### Hi-Desert Nature Museum

(760) 369-7212, <http://hidesertnaturemuseum.org/>  
57116 Twentynine Palms Highway, Yucca Valley 92284

### Hidden Valley Nature Center

[www.rivcoparks.org/hidden-valley-nature-center/](http://www.rivcoparks.org/hidden-valley-nature-center/)  
11401 Arlington Ave., Riverside 92505



### Idyllwild Nature Center

[www.rivcoparks.org/idyllwild-nature-center/](http://www.rivcoparks.org/idyllwild-nature-center/)  
25225 CA-243, Idyllwild 92549



### Highland Library and Environmental Learning Center

(909) 425-4700, [www.sbclib.org/LibraryLocations/HighlandSamJRacadioLibrary.aspx](http://www.sbclib.org/LibraryLocations/HighlandSamJRacadioLibrary.aspx)  
7863 Central Ave., Highland 92346

### Indian Canyons

(760) 323-6018, [www.indian-canyons.com/indian\\_canyons](http://www.indian-canyons.com/indian_canyons)  
38500 S. Palm Canyon Dr., Palm Springs 92264

### Inland Empire Waterkeeper

(951) 530-8823, [www.iewaterkeeper.org](http://www.iewaterkeeper.org)  
6876 Indiana Ave. Suite D, Riverside 92506  
[info@iewaterkeeper.org](mailto:info@iewaterkeeper.org)

### Jensen Alvarado Historic Ranch & Museum

<https://www.rivcoparks.org/jensen-alvarado-historic-ranch-and-museum/>  
4307 Briggs St., Riverside 92509

### Joshua Tree National Park Association and Desert Institute

(760) 367-5535, [www.joshuatree.org](http://www.joshuatree.org)  
74485 National Park Dr., Twentynine Palms 92277  
[mail@joshuatree.org](mailto:mail@joshuatree.org)



*Learn about sustainable Native Habitats,  
Urban Areas, and Agriculture.*



A Community  
Science Outpost



Riverside-Corona Resource Conservation District



Free Admission  
Open Daily • 8 am - 4 pm  
(Closed Holidays)

4500 Glenwood Dr., Riverside  
(951) 683-7691

[https://www.rcrcd.com/#Landuse\\_Learning\\_Center](https://www.rcrcd.com/#Landuse_Learning_Center)

Visit the LandUse Learning Center (LLC), a 3-acre garden that demonstrates sustainable practices.  
Plants are labeled, so pick up plant lists for each area and visit the seed library.

To arrange for free school field trips, call us at (951) 683-7691 ext 207 or email [snyder@rcrcd.org](mailto:snyder@rcrcd.org)

# ENVIRONMENTAL RESOURCES

## Jurupa Mountains Discovery Center

(951) 685-5818, <https://jmdc.org/>  
7621 Granite Hill Dr., Jurupa Valley 92509

## LandUse Learning Center, RCRCD

951-683-7691, [www.rcrcd.org](http://www.rcrcd.org)  
4500 Glenwood Dr., Riverside, 92501



## Living Desert Zoo/Gardens

(760) 346-5694, [www.livingdesert.org](http://www.livingdesert.org)  
47900 Portola Ave., Palm Desert 92260

## Mary Vagle Nature Center

(909) 349-6994  
<https://www.fontana.org/196/Mary-Vagle-Nature-Center>  
11501 Cypress Ave. E, Fontana 92337



## Mill Creek Visitor Center

(909) 382-2882  
34701 Mill Creek Rd., Mentone 92359

## Moorten Botanical Garden and Cactarium

(760) 327-6555, <http://moortenbotanicalgarden.com/>  
1701 S Palm Canyon Dr., Palm Springs 92264  
[ClarkMoorten@yahoo.com](mailto:ClarkMoorten@yahoo.com)

## Mt. Baldy Visitor Center Interpretive Site

(909) 982-2879, <https://www.fs.usda.gov/recarea/angeles/recarea/?recid=41942>  
Mt. Baldy Rd., Mt. Baldy 91759

## Ontario Conservation Park

(909) 395-2000, [www.ontarioca.gov/conservationpark](http://www.ontarioca.gov/conservationpark)  
303 East B St., Ontario 91764  
[conservationpark@ontarioca.gov](mailto:conservationpark@ontarioca.gov)

## Outdoor Adventures by Boojum

(951) 763-4102, [www.boojum.org](http://www.boojum.org)  
[info@boojum.org](mailto:info@boojum.org)

## Outdoor Classroom Project

(760) 862-1308  
<https://outdoorclassroomproject.org/ocp-community/demonstration-site-network/riverside-county/>  
43500 Monterey Ave., Palm Desert 92260

## Pali Institute

(909) 939-0888, [www.paliinstitute.com](http://www.paliinstitute.com)  
30778 Highway 18, Running Springs, 92382  
[director@paliinstitute.com](mailto:director@paliinstitute.com)

## Palm Springs Aerial Tramway

(888) 515-8726, [www.pstramway.com](http://www.pstramway.com)  
1 Tram Way, Palm Springs 92262  
[pstramway@pstramway.com](mailto:pstramway@pstramway.com)

## Pathfinder Ranch

(951) 659-2455 x12, [www.pathfinderranch.com](http://www.pathfinderranch.com)  
35510 Pathfinder Rd., Mountain Center 92561  
[oedirector@pathfinderranch.com](mailto:oedirector@pathfinderranch.com)

## Rancho Santa Ana Botanic Garden

(909) 625-8767, [www.rsabg.org](http://www.rsabg.org)  
1500 N College Ave., Claremont 91711  
[info@rsabg.org](mailto:info@rsabg.org)

## Rivers and Lands Conservancy

(951) 788-0670, [www.riversandlands.org](http://www.riversandlands.org)  
4075 Mission Inn Ave., Riverside 92501  
[info@riversandlands.org](mailto:info@riversandlands.org)

## Riverside Metropolitan Museum

(951) 826-5273, [www.riversideca.gov/museum/](http://www.riversideca.gov/museum/)  
3580 Mission Inn Ave., Riverside 92501



California Naturalist training at the LandUse Learning Center.



# ENVIRONMENTAL RESOURCES

## Salton Sea Authority

(760) 863-2695, <http://saltonseaauthority.org/>  
82995 Hwy 111, Suite 200, Indio 92201  
[info@ssajpa.org](mailto:info@ssajpa.org)

## San Bernardino County Museum

(909) 798-8608, <http://www.sbcounty.gov/museum/>  
2024 Orange Tree Lane, Redlands 92374



## San Geronimo Outdoor Science School

(714) 597-6630, <https://sangoss.org/>  
12500 CA-38, Angelus Oaks, 92305  
[sbrown.sgoss@gmail.com](mailto:sbrown.sgoss@gmail.com)



## Sycamore Creek Interpretive Center

Visit the SCIC for fun educational programs:

- Field trips for school and homeschool groups
- Classes and activities offered seasonally
- *Day of Wonder* on third Saturdays
- *Story Time Among the Sycamores*
- *Sycamore Summers*



A Community  
Science Outpost



**Open Thurs. - Sat.**  
**9 am - 3 pm**  
**Sun. - Weds. by appt.**

**(951) 277-0219**  
**11875 Indian Truck Trail**  
**Temescal Valley, 92883**

Visit us at [www.RCRCD.org](http://www.RCRCD.org) and [www.facebook.com/SCICTV](https://www.facebook.com/SCICTV)

## Santa Rosa Plateau Nature Education Foundation

(800) 369-4620, <https://www.srpnef.org/>  
39400 Clinton Keith Rd., Murrieta, 92562  
[info@srpf.org](mailto:info@srpf.org)

## S.C.R.A.P. Gallery

(760) 861-6479, [www.scrapgallery.org](http://www.scrapgallery.org)  
31855 Date Palm Dr., Ste. 3-110,  
Cathedral City, 92234  
[karen@scrapgallery.org](mailto:karen@scrapgallery.org)

## Sea and Desert Interpretive Association

(760) 393-3810, [www.seaanddesert.org](http://www.seaanddesert.org)  
Salton Sea State Recreation Area  
100-225 State Park Rd., North Shore 92254

## Sierra Club San Geronimo

### Big Bear Group

[www.sierraclub.org/san-geronimo/big-bear](http://www.sierraclub.org/san-geronimo/big-bear)

### San Geronimo Group

(951) 684-6203, [www.sangeronimo2.sierraclub.org](http://www.sangeronimo2.sierraclub.org)

### Mojave Group

<https://sangeronimo2.sierraclub.org/groups/mojave>

### Moreno Valley Group

[https://sangeronimo2.sierraclub.org/groups/moreno\\_valley](https://sangeronimo2.sierraclub.org/groups/moreno_valley)

### Tahquitz Group

<https://sangeronimo2.sierraclub.org/groups/tahquitz>

### San Bernardino Mountains Group

[www.sierraclub.org/san-geronimo/san-bernardino-mountains](http://www.sierraclub.org/san-geronimo/san-bernardino-mountains)

### Santa Margarita Group

[www.sierraclubsmg.org](http://www.sierraclubsmg.org)

## Skypark at Santa's Village

(909) 744-9926  
[www.skyparksantasvillage.com](http://www.skyparksantasvillage.com)  
28950 California 18, Skyforest 92385

## SummerTree Institute

(760) 363-7229, <https://summertree.org/>  
P.O. Box 307, Morongo Valley 92256

## Sycamore Creek Interpretive Center

(951) 277-0219  
[http://rcrcd.org/#Sycamore\\_Creek\\_Interpretive\\_Center](http://rcrcd.org/#Sycamore_Creek_Interpretive_Center)  
11875 Indian Truck Trail Rd. Temescal Valley 92883



## Tahquitz Canyon

(760) 416-7044  
<http://www.tahquitzcanyon.com/canyon>  
500 W Mesquite Ave., Palm Springs 92264



# ENVIRONMENTAL RESOURCES

## Thousand Palms Oasis in the Coachella Valley Preserve

(760) 343-1234, <http://coachellavalleypreserve.org>  
29200 Thousand Palms Canyon Rd., Thousand Palms 92276

## Thousand Pines Outdoor Science School

(909) 338-8900, <http://www.thousandpinesoutdoored.com/>  
359 Thousand Pines Rd., Crestline 92325  
[info@thousandpinesoutdoored.com](mailto:info@thousandpinesoutdoored.com)

## Transition Habitat Conservancy

(760) 868-1400, [www.transitionhabitat.org](http://www.transitionhabitat.org)  
1681 Hillview Rd., Pinon Hills 92372

## Desert Wildlife Management Area/BLM Barstow District

[www.facebook.com/transitionhabitatconservancy/](http://www.facebook.com/transitionhabitatconservancy/)

## Portal Ridge Wildlife Preserve

[www.facebook.com/transitionhabitatconservancy/](http://www.facebook.com/transitionhabitatconservancy/)

## Puma Canyon Ecological Reserve and Roberta Dewey Discovery Center/Monarch Waystation, Pinon Hills

<https://www.transitionhabitat.org/puma-canyon-ecological-reserve>

## UC Riverside Botanic Gardens

(951) 784-6962, [www.gardens.ucr.edu](http://www.gardens.ucr.edu)  
UCR campus, 1 Botanic Gardens Dr., Riverside 92521  
[ucrbg@ucr.edu](mailto:ucrbg@ucr.edu)

## UCR Entomology Research Museum

<https://entmuseum.ucr.edu/>  
<https://www.facebook.com/ucrentomology>

## Western Municipal Water District

School grants for water study:  
[www.wmwd.com/documentcenter/view/231](http://www.wmwd.com/documentcenter/view/231)

## The Wildlands Conservancy

[www.wildlandsconservancy.org](http://www.wildlandsconservancy.org)  
39611 Oak Glen Rd. #12, Oak Glen 92399  
**Children's Outdoor Discovery Center at Oak Glen Preserve** (909) 790-3698  
**Pioneer Mountains Preserve** (760) 369-7105  
**Whitewater & Mission Creek Preserves** (760) 325-7222

## Ya'i Heki' Regional Indian Museum at Lake Perris

(951) 940-5657, [http://www.parks.ca.gov/?page\\_id=24699](http://www.parks.ca.gov/?page_id=24699)  
17801 Lake Perris Dr., Perris 92571



## THE WILDLANDS — CONSERVANCY —

### PROVIDING FREE OUTDOOR EDUCATION FOR SOUTHERN CALIFORNIA KIDS SINCE 1998

Our Oak Glen, Whitewater and Mission Creek Preserves provide the perfect mountain and desert backdrops for unique, hands-on, curriculum-based education.

For program information and registration call  
(909) 790-3698 » Oak Glen  
(760) 325-7222 » Whitewater & Mission Creek

[WildlandsConservancy.org](http://WildlandsConservancy.org)



# ENVIRONMENTAL RESOURCES

## PARKS, PRESERVES & MONUMENTS

### City Wildland Parks

[www.riversideca.gov/park\\_rec/facilities-rentals/outdoor-facilities/trails](http://www.riversideca.gov/park_rec/facilities-rentals/outdoor-facilities/trails) (951) 826-2000

#### **Frank A. Miller Mt. Rubidoux Memorial Park**

4706 Mt. Rubidoux Dr., Riverside 92501

#### **Challen Park**

4602 Challen Ave., Riverside 92503

#### **Sycamore Canyon Wilderness Park**

(951) 826-2596, 400 Central Ave., Riverside 92507

### County Parks

#### **Riverside**

(800) 234-7275, [www.rivcoparks.org](http://www.rivcoparks.org)

#### **Box Springs Mountain Reserve**

9699 Box Springs Mountain Rd., Moreno Valley 92557

#### **Harford Springs Reserve**

21470 Gavilan Rd., Perris 92570

#### **Santa Rosa Plateau Ecological Reserve and**

#### **Sylvan Meadows Multi-Use Area**

(951) 677-6951

39400 Clinton Keith Rd., Murrieta 92562

#### **San Bernardino**

(909) 387-2757, <http://cms.sbcounty.gov/parks/Home.aspx>

#### **Martin Tudor-Jurupa Hills Regional Park**

11660 Sierra Ave., Fontana 92337

#### **Moabi Regional Park**

100 Park Moabi Rd., Needles 92363

#### **Mojave Narrows Regional Park**

18000 Yates Rd., Victorville 92392

#### **Mojave River Forks Regional Park**

17891 CA 173, Hesperia 92345

### California

<https://www.parks.ca.gov/ParkIndex>

#### **Mt. San Jacinto State Park**

(951) 659-2607, [https://www.parks.ca.gov/?page\\_id=636](https://www.parks.ca.gov/?page_id=636)  
25905 Highway 243, Idyllwild 92549

#### **Salton Sea Recreation Area**

(760) 393-3052, [http://www.parks.ca.gov/?page\\_id=639](http://www.parks.ca.gov/?page_id=639)  
100-225 State Park Rd., Mecca 92254

#### **San Jacinto Wildlife Area**

(951) 928-0580, [www.northfriends.org/sjwa.html](http://www.northfriends.org/sjwa.html)  
17050 Davis Rd., Lakeview 92567

### Federal

#### **Bureau of Land Management**

##### **Moreno Valley:**

<https://www.blm.gov/office/california-desert-district-office>

##### **Palm Springs:**

<https://www.blm.gov/office/palm-springs-south-coast-field-office>

##### **Barstow:**

<https://www.blm.gov/office/barstow-field-office>

#### **Joshua Tree National Park**

(760) 367-3012, [www.nps.gov/jotr/learn/education](http://www.nps.gov/jotr/learn/education)  
9800 Black Rock Canyon Rd., Yucca Valley 92284  
[jotr\\_education@nps.gov](mailto:jotr_education@nps.gov)

#### **Mojave National Preserve**

(760) 252-6104, <https://www.nps.gov/moja/index.htm>

#### **Santa Rosa and San Jacinto Mountains National Monument**

51-500 Highway 74, Palm Desert 92260

<https://www.blm.gov/programs/national-conservation-lands/california/santa-rosa-and-san-jacinto-mountains-national-monument>

### National Forests

#### **Cleveland National Forest**

Learning: <https://www.fs.usda.gov/main/cleveland/learning>

#### **San Bernardino National Forest**

Learning: <https://www.fs.usda.gov/main/sbnf/learning>

#### **National Children's Forest**

(909) 867-5996

<http://mountainsfoundation.org/programs/children-s-forest>  
32573 Highway 18, Running Springs 92382



Campsite at Joshua Tree National Park



# ENVIRONMENTAL RESOURCES

## OUT OF COUNTIES

### Anza Borrego Desert Nature Center

(760) 767-3052, [www.abdnha.org](http://www.abdnha.org)  
652 Palm Canyon Dr., Borrego Springs 92004

### Audubon Center at Debs Park

(323) 221-2255, <http://debspark.audubon.org/>  
4700 Griffin Ave., Los Angeles 90031

### Back Bay Science Center

(949) 640-9959, <http://backbaysciencecenter.org/>  
600 Shellmaker Rd., Newport Beach 92660

### Bolsa Chica Ecological Reserve

(714) 846-1114, [www.bolsachica.org](http://www.bolsachica.org)  
18000 CA-1, Huntington Beach, 92648



### Chino Hills State Park Discovery Center

(951) 780-6222  
[www.chinohillstatepark.org/uncategorized/discovery-center](http://www.chinohillstatepark.org/uncategorized/discovery-center)  
4500 Carbon Canyon Rd., Brea 92823



### Devil's Punchbowl Natural Area

(661) 944-2743, <https://www.devils-punchbowl.com/>  
28000 Devils Punchbowl Rd., Pearblossom 93553

### Eaton Canyon Nature Center

(626) 398-5420, <https://www.ecnca.org/>  
1750 N. Altadena Dr., Pasadena 91107

### Environmental Nature Center

(949) 645-8489, <https://encenter.org/>  
1601 East 16th St., Newport Beach 92663

### Inside the Outdoors

#### Orange County Dept. of Education

(714) 708-3885, <http://ito.ocde.us/Pages/Home.aspx>  
200 Kalmus Dr., Costa Mesa 92626  
[insidetheoutdoors@ocde.us](mailto:insidetheoutdoors@ocde.us)

### Los Angeles City Park Rangers

(323) 644-6661, <https://www.laparks.org/ranger/about>  
4730 Crystal Springs Dr., Los Angeles 90027  
Nature programs, school hikes, presentations

### Muth Interpretive Center

(949) 923-2290  
<http://newportbay.org/facilities/muth-interpretive-center/>  
2301 University Dr., Newport Beach 92660

### Newport Landing

(949) 675-0551, [www.newportwhales.com](http://www.newportwhales.com)  
309 Palm St. #A, Newport Beach 92661  
[info@newportwhales.com](mailto:info@newportwhales.com)

### Oak Canyon Nature Center

(714) 998-8380,  
[www.anaheim.net/1096/Oak-Canyon-Nature-Center](http://www.anaheim.net/1096/Oak-Canyon-Nature-Center)  
6700 E. Walnut Canyon Rd., Anaheim 92807



### Sonny Bono Salton Sea National Wildlife Refuge

(760) 348-5278, [www.fws.gov/refuge/sonny\\_bono\\_salton\\_sea/](http://www.fws.gov/refuge/sonny_bono_salton_sea/)  
906 W Sinclair Rd., Calipatria 92233

### Tucker Wildlife Sanctuary

(714) 649-2760, [www.tuckerwildlife.org](http://www.tuckerwildlife.org)  
29322 Modjeska Canyon Rd., Silverado 92676

**The Santa Ana Watershed  
Community Science  
Network is pleased to  
announce the creation of  
Citizen Science Outposts  
throughout the watershed.**



- Bolsa Chica Ecological Reserve
- Chino Hills State Park Discovery Center
- Hidden Valley Nature Center
- Idyllwild Nature Center
- Mary Vagle Nature Center
- Oak Canyon Nature Center
- RCRC Land Use Learning Center
- San Bernardino County Museum
- Sycamore Creek Interpretive Center
- Ya'i Heki' Regional Indian Museum-Perris



### Coming Summer 2019!

Outposts host backpacks with tools for collecting data for citizen science projects.

To find out how you can participate in citizen science at one of these locations, contact or visit one of these sites.

To learn more about the Outpost Program, please contact [Presley@rcrcd.org](mailto:Presley@rcrcd.org) or (951) 683-7691 ext. 223 or 207.



Find us!

# ENVIRONMENTAL RESOURCES

## RESOURCE CONSERVATION DISTRICTS

### Coachella Valley Resource Conservation District

(760) 347-3675 ext.190, [www.cvrcd.com](http://www.cvrcd.com)  
81077 Indio Blvd. Suite A, Indio 92201

### Inland Empire Resource Conservation District

(909) 799-7407, [www.iercd.org](http://www.iercd.org)  
25864-K Business Center Dr., Redlands 92374  
[info@iercd.org](mailto:info@iercd.org)

### Mojave Desert Resource Conservation District

(760) 843-6882, [www.mojavedesertgcd.org](http://www.mojavedesertgcd.org)  
15415 W. Sand St., #103, Victorville 92392

### Riverside-Corona Resource Conservation District

951-683-7691, [www.rcrcd.org](http://www.rcrcd.org)  
4500 Glenwood Dr., Riverside 92501  
(at the corner of 14th St.)

### San Jacinto Basin Resource Conservation District

(951) 654-7733, [www.sjbrcd.org](http://www.sjbrcd.org)  
950 N. Ramona Blvd., Suite 6, San Jacinto 92582

### Temecula-Elsinore-Anza-Murrieta Resource Conservation District

(951) 387-8992 [www.teamrcd.org/](http://www.teamrcd.org/)  
41923 Second St., Fourth Floor, Temecula 92590

***Attention high school teachers: For Envirothon sponsorship and training, contact your local Resource Conservation District (see page 5).***

INLAND EMPIRE



RESOURCE  
CONSERVATION DISTRICT

#### Inland Empire RCD

25864-K Business Center Dr.  
Redlands, CA 92374  
(909) 799-7407  
[www.iercd.org](http://www.iercd.org)



The Inland Empire RCD works to promote the understanding that "the quality of the environment determines the quality of life". We promote our natural resources through various programs including:

- FREE K-12 Conservation Education Programs Consistent with NGSS
- FREE Outdoor Learning Field Trips to the North Etiwanda Preserve
- Sponsoring for Teachers Participating in Trout in the Classroom
- Water Education Teacher Workshops

Contact Jasmine Clark at [jclark@iercd.org](mailto:jclark@iercd.org) or call (909) 283-7780 to find out if you are an Inland Empire RCD resident.





# ENVIRONMENTAL RESOURCES

## ONLINE RESOURCES

### Alliance for Climate Education

<https://acespace.org/>

### AllTrails

<https://www.alltrails.com>

### ArtPlantae

[www.ArtPlantae.com](http://www.ArtPlantae.com)

### AskNature

<https://asknature.org/>

### Audubon Bird Guide App

<https://www.audubon.org/app>

### Bureau of Land Management Hands on the Land

<https://www.handsontheland.org/about-us.html>

### CalEarth

<https://www.calearth.org/>

### Calflora

<https://www.calflora.org/>

### California Association for Environmental and Outdoor Education (AEOE)

[www.aeoe.org](http://www.aeoe.org)

<http://aeoe.org/resources>

### California Invasive Plant Council

<https://www.cal-ipc.org/>

### California Outdoor Engagement Coalition

<https://outdoorengagement.berkeley.edu/>

### California ReLeaf

<https://californiareleaf.org/programs/education/>

### CalRecycle California Education and the Environment Initiative

(916) 341-6769, [www.californiaeei.org](http://www.californiaeei.org)

[eei@calrecycle.ca.gov](mailto:eei@calrecycle.ca.gov)

### Cavity Conservation

<http://cavityconservation.com/>

### Children and Nature Network

[www.childrenandnature.org](http://www.childrenandnature.org)

[info@childrenandnature.org](mailto:info@childrenandnature.org)

### Citizen Science

[www.citizenscience.org/](http://www.citizenscience.org/)

### City Nature Challenge

<http://citynaturechallenge.org/education-toolkit/>

### Cornell Lab of Ornithology

1-800-843-BIRD

<https://www.birds.cornell.edu>

Free bird ID app: <http://merlin.allaboutbirds.org/>

### CREEC Network

<http://www.creec.org>

### eBird

<https://ebird.org/home>

### Forestry Challenge

<http://forestrychallenge.org/>

### Friends of Big Bear Valley Eagle Cam

<https://fobbv.openpoll.com/eagle/>

### Grades of Green

<https://gradesofgreen.org/>

### Greening Stem Learning Center

<https://www.neefusa.org/greening-stem/greening-stem-educator-resources>

### Inland Urban Forest Council

<https://inlandurbanforestcouncil.org/>

### iNaturalist

[www.inaturalist.org/projects/focal-trees-project](http://www.inaturalist.org/projects/focal-trees-project)

### Leave No Trace Center for Outdoor Ethics

<https://lnt.org/>

### Mission Springs Water District Kids Corner

<https://mswd.org/kidscorner.aspx>

### National Environmental Education Foundation

<https://www.neefusa.org/>

Green STEM Toolkit

### Nature's Notebook

[https://www.usanpn.org/natures\\_notebook](https://www.usanpn.org/natures_notebook)

### Naturalist for You

<http://www.naturalist-for-you.org/>

### Next Generation Science Standards (NGSS)

<https://www.nextgenscience.org>

# SAN BERNARDINO COUNTY SITE INDEX

(map on pages 16 & 17)

- 1 123 Organic Farm Highland Springs Ranch and Inn
- 2 4H Youth Development Program, San Bernardino County
- 3 Agriscapes Cal Poly Pomona
- 4 Amy's Farm
- 5 Arrowhead Ranch Outdoor Science School
- 6 Audubon Bear Paw Sanctuary
- 7 Barton Flats Visitor Center
- 8 Big Bear Discovery Center
- 9 Big Morongo Canyon Preserve
- 10 Camp WiWoCa
- 11 Chino Basin Water Conservation District Waterwise Community Center
- 12 Chino Community Garden
- 13 Chino Creek Wetlands and Education Park
- 14 Cucamonga Valley Water District Environmental Learning Center
- 15 Emerald Cove Outdoor Science Institute
- 16 Girl Scouts of San Gorgonio Council
- 17 Greenspot Farms
- 18 The Grove School
- 19 Guldseth Cherry Orchard
- 20 Heaps Peak Arboretum
- 21 Hi-Desert Nature Museum
- 22 Highland Library and Environmental Learning Center
- 23 Huerta de Valle - Ontario
- 24 Incredible Edible Community Garden
- 25 Inland Empire Resource Conservation District
- 26 Joshua Tree National Park and Desert Institute
- 27 Live Oak Canyon Adventure Farm
- 28 Los Rios Rancho
- 29 Luther Glen Farm
- 30 Mary Vagle Nature Center
- 31 Mill Creek Visitor Center
- 32 Mojave Narrows Regional Park
- 33 Mojave River Forks Regional Park
- 34 Mt. Baldy Visitor Center Interpretive Site
- 35 National Children's Forest
- 36 Ontario Conservation Park
- 37 Pali Institute
- 38 Prado Regional Park
- 39 Rancho Santa Ana Botanic Garden
- 40 Riley's Farm
- 41 San Bernardino County Museum
- 42 San Gorgonio Outdoor Science School
- 43 Skypark at Santa's Village
- 44 Snow-line Orchard
- 45 Thousand Pines Outdoor Science School
- 46 Transition Habitat Conservancy
- 47 The Wildlands Conservancy Children's Outdoor Discovery Center at Oak Glen Preserve
- 48 Whitewater Preserve
- 49 Willowbrook Apple Farm





## RCHCA

The Riverside County Habitat Conservation Agency is committed to youth education and habitat preservation. RCHCA hosts annual Endangered Species Day Events throughout the year and sponsors educational field trips to teach students about the importance of conserving natural resources.

For more information, please contact  
Princess Hester at  
[phester@wrcog.us](mailto:phester@wrcog.us)



*Stephens' Kangaroo Rat*

## RECYCLING



WRCOG's Recycling and Solid Waste Programs are dedicated to serving local communities through environmental preservation and neighborhood beautification. WRCOG hosts educational outreach events in Western Riverside County, promoting proper recycling methods for everything from hazardous waste to used oil.

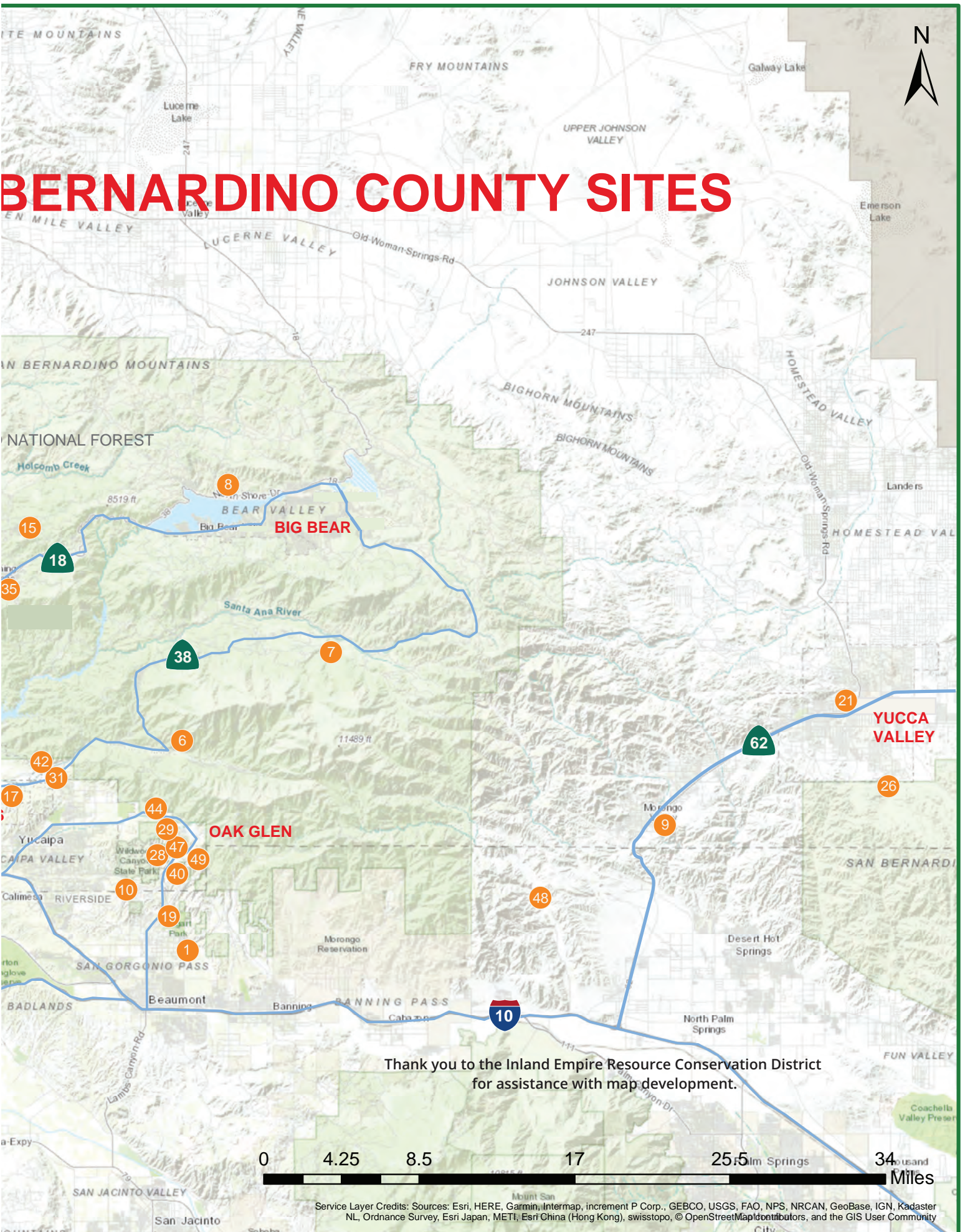
For more information, please contact  
Kyle Rodriguez at  
[krrodriguez@wrcog.us](mailto:krrodriguez@wrcog.us)



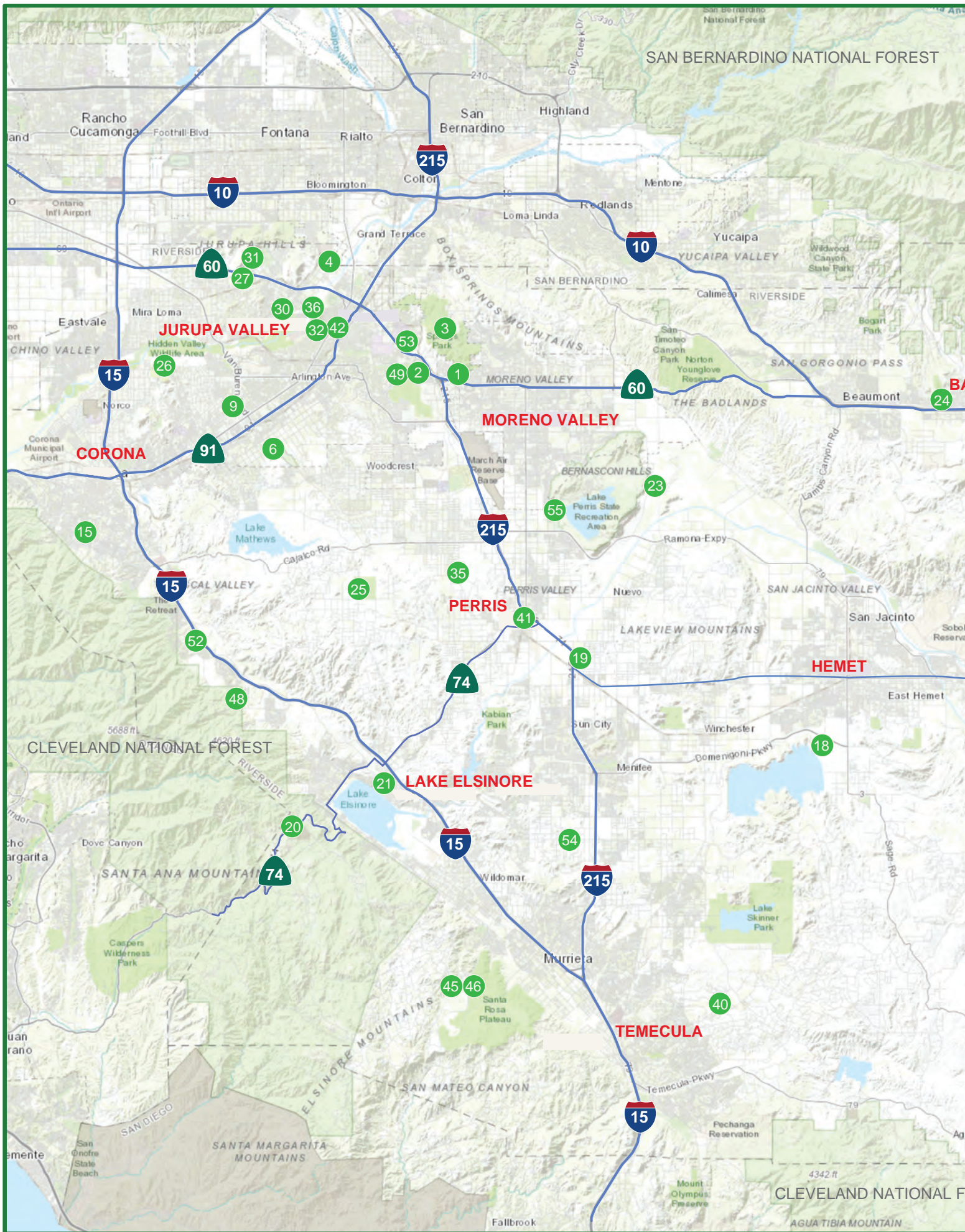




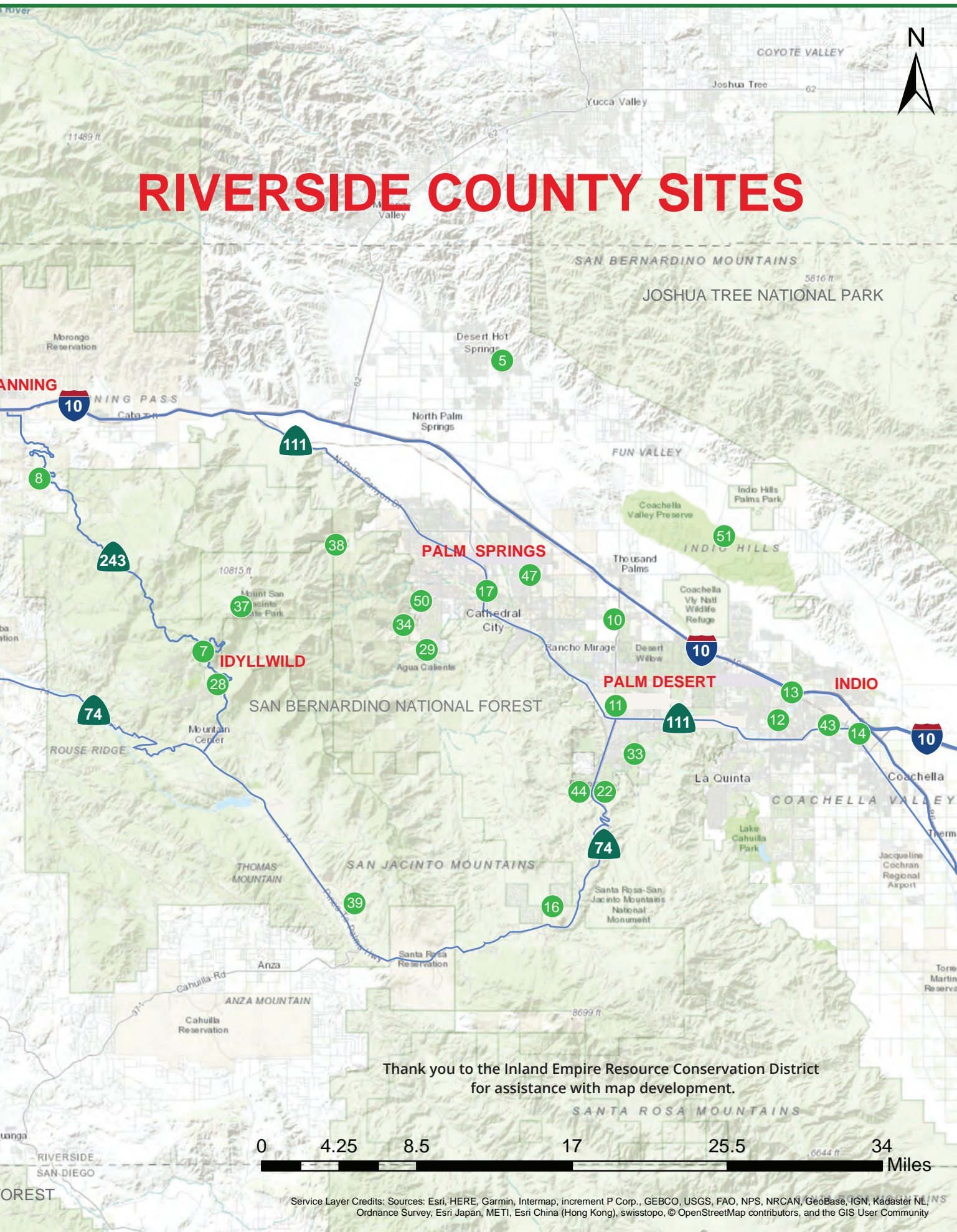
# BERNARDINO COUNTY SITES











# RIVERSIDE COUNTY SITES

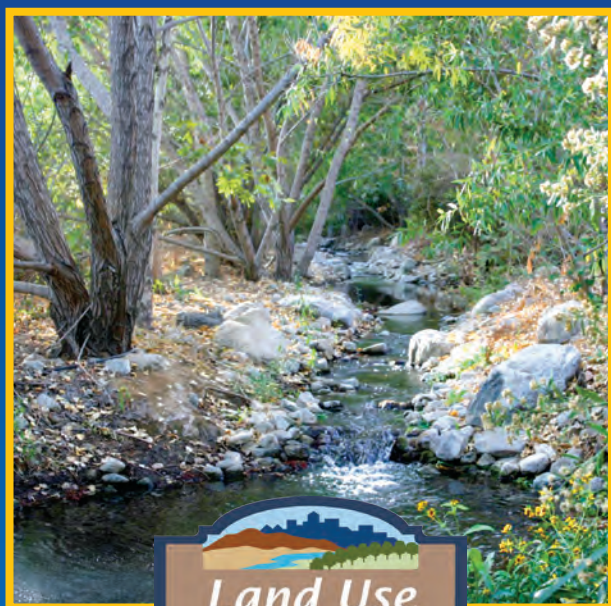
Thank you to the Inland Empire Resource Conservation District  
for assistance with map development.

Service Layer Credits: Sources: Esri, HERE, Garmin, Intermap, increment P Corp., GEBCO, USGS, FAO, NPS, NRCAN, GeoBase, IGN, Kadaster NL, Ordnance Survey, Esri Japan, METI, Esri China (Hong Kong), swisstopo, © OpenStreetMap contributors, and the GIS User Community



# Help Create a Sustainable Future!

The Riverside-Corona Resource District (RCRCD) is a local government agency that helps conserve the natural resources (soil, water, plants, and wildlife) of areas within western Riverside and San Bernardino Counties.



Visit the LandUse Learning Center, a 3-acre demonstration garden of sustainable practices in Riverside.

RCRCD offers:

- tours and field trips
- training, including California Naturalist, Project Learning Tree, the Santa Ana Watershed Citizen Science Network
- workshops about native plants, waterwise yards, tree care, urban agriculture
- educational materials and school garden mini-grants for educators who work or reside within RCRCD's service area: <http://www.rcrcd.org/#Map>



Sycamore Creek  
Interpretive Center

Visit the Sycamore Creek Interpretive Center in Temescal Valley.

RCRCD provides technical advice to land users, educational programs for the community, and conducts on-the-land conservation projects.

Find local resource management publications online at <http://www.rcrcd.org/#Publications>



Riverside-Corona Resource Conservation District  
4500 Glenwood Dr. Riverside, CA 92501

Find upcoming programs and events: [www.facebook.com/RCRCD/](http://www.facebook.com/RCRCD/)



# RIVERSIDE COUNTY SITE INDEX

(for map on pages 18 & 19)

- 1 4H Youth Development Program, Riverside County
- 2 Ameal Moore Nature Center/Sycamore Canyon Park
- 3 Box Springs Mountain Reserve
- 4 Burrtec
- 5 Cabot's Pueblo Museum
- 6 California Citrus State Historic Park
- 7 Camp Azalea Trails
- 8 Camp Skyland Ranch
- 9 Challen Park
- 10 Children's Discovery Museum of the Desert
- 11 Coachella Valley Mountains Conservancy
- 12 Coachella Valley Museum and Cultural Center
- 13 Coachella Valley Resource Conservation District
- 14 Coachella Valley Wild Bird Center
- 15 Corona Heritage Park and Museum
- 16 Desert Cities Bird Club
- 17 Desert Water Agency
- 18 Diamond Valley Lake Visitors Center/  
Western Science Center
- 19 Eastern Municipal Water District
- 20 El Cariso Visitors Center
- 21 Elsinore Valley Municipal Water District Water  
Education Program
- 22 Friends of the Desert Mountains
- 23 Friends of the Northern San Jacinto Valley/  
San Jacinto Wildlife Area
- 24 Gilman Historic Ranch and Wagon Museum
- 25 Harford Springs Reserve
- 26 Hidden Valley Nature Center
- 27 Huerta de Valle - Jurupa Valley
- 28 Idyllwild Nature Center
- 29 Indian Canyons
- 30 Jensen Alvarado Historic Ranch and Museum
- 31 Jurupa Mountains Discovery Center
- 32 LandUse Learning Center/  
Riverside-Corona Resource Conservation District
- 33 Living Desert Zoo/Gardens
- 34 Moorten Botanical Garden and Cactarium
- 35 Mr. Joe's Farm
- 36 Mt. Rubidoux/Frank A. Miller Memorial Park
- 37 Mt. San Jacinto State Park
- 38 Palm Springs Aerial Tramway
- 39 Pathfinder Ranch
- 40 Peltzer Pumpkin Farm
- 41 Perris Green City Farm
- 42 Riverside Metropolitan Museum
- 43 Salton Sea Authority
- 44 Santa Rosa and San Jacinto Mountains National  
Monument
- 45 Santa Rosa Plateau Ecological Reserve/Sylvan  
Meadows Multi-Use Area
- 46 Santa Rosa Plateau Nature Education  
Foundation
- 47 S.C.R.A.P. Gallery
- 48 Sycamore Creek Interpretive Center
- 49 Sycamore Canyon Wilderness Park
- 50 Tahquitz Canyon
- 51 Thousand Palms Oasis in the Coachella Valley  
Preserve
- 52 Tom's Farm
- 53 UC Riverside Botanic Gardens/Entomology  
Research Museum
- 54 Wickerd Farm
- 55 Ya'i Heki' Regional Indian Museum at Lake Perris



# ENVIRONMENTAL RESOURCES

## ONLINE RESOURCES CONT.

### Our Climate our Future

Video experience: <https://ourclimateourfuture.org/>

### San Bernardino County Superintendent of Schools Science Curriculum

<http://www.sbccss.k12.ca.us/index.php/education-support-services/curriculum-instruction-and-academic-enrichment/science>

### School Gardens and Native Plants

[www.cnps.org/cnps/grownative/school\\_gardens.php](http://www.cnps.org/cnps/grownative/school_gardens.php)

### SciStarter

<https://scistarter.org/>

### SelecTree, Urban Forest Ecosystem Institute

<https://selectree.calpoly.edu/>

### Sharing Nature Worldwide

[www.sharingnature.com](http://www.sharingnature.com)

### Soil Health and Watershed Function Teacher's Manual

[https://soilcarboncoalition.org/learning/Soil\\_Health\\_and\\_Watershed\\_Function.pdf](https://soilcarboncoalition.org/learning/Soil_Health_and_Watershed_Function.pdf)

### Think Earth Environmental Education Foundation

<https://thinkearth.org/>

### Trails.com

<https://www.trails.com/>

### Tree Care for Birds and Other Wildlife

<https://treecareforbirds.com/>

### Trees Are Good

<https://www.treesaregood.org/>

### Urban Forest Management Plan Toolkit

<https://ufmptoolkit.net/>

### Water Education Foundation

<https://www.watereducation.org/project-wet>

### Water Education/Water Awareness Committee

<https://usewaterwisely.com/>

### Wilderness Connect

[www.wilderness.net](http://www.wilderness.net)

### World's Largest Lesson

[www.worldslargestlesson.globalgoals.org](http://www.worldslargestlesson.globalgoals.org)

### Zooniverse

[www.zooniverse.org](http://www.zooniverse.org)

*Find more nature guides and citizen science apps now available on smart phones*



## EDUCATIONAL ADVENTURES



**STARTING AT  
\$19 / STUDENT**

- Meets NGSS and California State Standards
- Grade Specific Education Labs
- Conservation tours
- Includes Admission to the Park
- Outdoor Adventure Activities
- Minimum 30 Students



✉ [SBURROWS@SKYPARKSANTASVILLAGE.COM](mailto:SBURROWS@SKYPARKSANTASVILLAGE.COM)

**SKYPARK**  
AT SANTA VILLAGE

**(909) 744-9926**

[SKYPARKSANTASVILLAGE.COM/EDUCATIONAL-ADVENTURES/](http://SKYPARKSANTASVILLAGE.COM/EDUCATIONAL-ADVENTURES/)



# ENVIRONMENTAL RESOURCES

## RETAILERS

### Acorn Naturalists

<https://www.acornnaturalists.com/>

### Carolina Biological Supply Company

<https://www.carolina.com/resources>

### Enviroscapes

<https://www.enviroscapes.com/>

### Forestry Suppliers

<https://www.forestry-suppliers.com/>

### Nature Watch

<https://www.nature-watch.com>

### Wild Birds Unlimited

<https://www.wbu.com/>

## Eight Tips to Make School Field Trip Planning Easier

1. Look for a site/program that reinforces or complements what you are teaching. If it doesn't, provide a classroom introduction to the concepts and key vocabulary that will be covered during the field trip.
2. Plan way ahead, if possible! Consider the time of year and time of day. Plan outdoor trips when it's not predicted to be extremely hot, cold, or rainy. Are there buildings, structures and activities for back-up, in the event of unpleasant weather?
3. If possible, pre-visit the site to ensure it is appropriate for your age group and that it has the capacity to handle your numbers. Are water, restrooms, shade, and handicap accessibility available? For large numbers, you may need to divide into smaller groups. You will have a smoother experience if you set groups in advance and ensure that each group has a chaperone.
4. When communicating with site staff, provide at least three alternative dates and times, student ages or grade level, approximate numbers, and any particular learning objectives that you desire. Take into consideration travel time, especially if you will be traveling on busy routes during high traffic.
5. Verify that transportation and additional chaperones are available for the scheduled date and time.
6. Discuss with students safety considerations and appropriate outdoor clothing, such as hats, closed-toed shoes for hiking, and long sleeves and/or sunscreen.
7. Name tags! And for chaperones too.
8. Most importantly: *Have Fun!*

P.S. Please plan to provide feedback such as post trip surveys, reviews, and/or student thank you letters/art.



Raised beds help make gardening accessible.



# AGRICULTURAL RESOURCES

## GARDENING

### UC Cooperative Extension, Master Gardener Training Program

Formal training and continuing education provided to volunteers who extend research based horticultural information and sustainable gardening practices to the public.

#### Riverside County Area

[ucanr.edu/sites/RiversideMG/](http://ucanr.edu/sites/RiversideMG/)  
Rosa Olaiz, (951) 683-6491 Ext. 230, [rmolaiz@ucanr.edu](mailto:rmolaiz@ucanr.edu)

#### San Bernardino County Area

<http://mgsb.ucanr.edu/>  
Maggie O'Neill, (909) 387-2182, [magoneill@ucanr.edu](mailto:magoneill@ucanr.edu)

### Riverside & San Bernardino County Master Preservers

Contact University of California Cooperative Extension  
<http://ceriverside.ucanr.edu/>

### Master Composters, Riverside County Department of Waste Resources

(951) 486-3200  
<http://www.rcwaste.org/composting/how>

## MULCH, AMENDMENTS

### Burrtec

1830 Agua Mansa Rd., Riverside 92509  
(951) 786-0544, [www.burrtec.com/organic-and-food](http://www.burrtec.com/organic-and-food)  
Mulch, compost, wood chips, soil amendments.



Huerta del Valle hosts a weekly workshop for kids on nutrition, gardening, food and environmental justice. Workshops are held at the Ontario location on Saturdays from 10 am -12:30 pm.



For more information on youth programming contact: Ingrid Gutierrez  
[igutierrez@huertadelvalle.org](mailto:igutierrez@huertadelvalle.org)  
831 E. Belmont St., Ontario  
7701 Mission Blvd., Jurupa Valley  
[www.huertadelvalle.org](http://www.huertadelvalle.org)

## GARDENS

### Chino Basin Water Conservation District

4594 San Bernardino St., Montclair 91763  
(909) 626-2711, <https://www.cbwcd.org/>

### Chino Community Garden

5976 Riverside Dr., Chino 91710  
(909) 334-3478 [info@healthychino.org](mailto:info@healthychino.org)

### The Grove School (Montessori)

200 Nevada St., Redlands 92373  
(909) 798-7831 <http://www.thegroveschool.org/>  
Farmers' Market Saturdays 8 am to Noon

### Huerta Del Valle (2 locations)

831 E. Belmont St., Ontario  
7701 Mission Blvd., Jurupa Valley  
(909) 347-2860 [info@huertadelvalle.org](mailto:info@huertadelvalle.org)  
[www.huertadelvalle.org](http://www.huertadelvalle.org)  
Beginner farmer training

### Incredible Edible Community Garden

800 W. Arrow Hwy, Upland  
(inside Pacific Christian Center)  
[TheIECG@gmail.com](mailto:TheIECG@gmail.com), [www.iecgarden.org](http://www.iecgarden.org)

### Riverside Garden Council and Community Gardens

Facebook: Riverside Garden Council  
<https://riversidegardencouncil.org/>

### Perris Green City Farm

135 N. D St., Perris 92570  
(951) 943-6100 x 301, [esida@cityofperris.org](mailto:esida@cityofperris.org)  
<http://cityofperris.org/livewell/community-garden.html>

## SEED LIBRARIES

A Seed Library is a collaborative space for sharing seeds and keeping custody of traditional knowledge about saving seeds.

### San Bernardino County Seed Library

Chino Basin Water Conservation District  
4594 San Bernardino St., Montclair 91763  
[www.cbwcd.org](http://www.cbwcd.org)

### Riverside Seed Library

at the LandUse Learning Center, RCRCD  
4500 Glenwood Dr., Riverside 92501  
Friday - Sunday, 8 am - 3:30 pm  
A project of the Riverside Garden Council  
[www.riversidegardencouncil.org](http://www.riversidegardencouncil.org)



# AGRICULTURAL RESOURCES

## AGRITOURISM SITES

### 123 Organic Farm

#### Highland Springs Ranch & Inn

(951) 845-1151, [www.123farm.com](http://www.123farm.com)

Open daily • 9 am - 5 pm

10600 Highland Springs Ave., Cherry Valley 92223

Lavender & Olive Festivals, sheep shearing, weddings, school programs, farm camp. Tours by reservation.

### Agriscapes Cal Poly Pomona

(909) 869-6722, [www.cpp.edu/~agriscapes/](http://www.cpp.edu/~agriscapes/)

Farm store open daily 10 am - 6 pm

Hours and dates for other activities vary, some seasonal, visit website or call to confirm

Cal Poly Pomona, 4102 S. University Dr., Pomona 91768

Petting farm, children's garden, classes, events, festivals

### Amy's Farm

(844) 426-9732, [info@amysfarm.com](mailto:info@amysfarm.com)

Open Monday-Saturday

Produce stand open 9 am - 5 pm

Farm open Noon - 2 pm weekdays • 9 am - 5 pm Sat.

7698 Eucalyptus Ave., Ontario 91762

Non-profit, donations requested. Produce, honey, olive oil, pork and beef sold. Tours by reservation.

### California Citrus State Historic Park

9400 Dufferin Ave. (at Van Buren), Riverside 92503

(951) 780-6222 [www.parks.ca.gov/?page\\_id=649](http://www.parks.ca.gov/?page_id=649)

The park and museum recapture the time when "Citrus was King", and showcase the importance of the citrus industry in southern California.

### Greenspot Farms

(909) 794-7653, [www.greenspotfarms.com](http://www.greenspotfarms.com)

Open daily • 9 am - 6 pm

10133 Ward Way, Mentone 92359

Farm animals, hayrides, Christmas Tree farm, honeybees, gift shop, weddings, school tours.

### Guldseth Cherry Orchard

(951) 845-2490, [www.guldsethcherryorchard.com](http://www.guldsethcherryorchard.com)

Farmstand open daily • 1- 5 pm, call to confirm

9150 Whispering Pines Rd., Cherry Valley, 92223

U-Pick cherry orchard (May-June), group tours.

### Live Oak Canyon Adventure Farm

(909) 795-8733, [www.liveoakcanyon.com](http://www.liveoakcanyon.com)

Open seasonally, see website or facebook page for calendar, hours and events

32335 Live Oak Canyon Rd., Redlands 92373

Gift shop, games, bounce houses, wagon rides, petting zoo, pumpkin patch (Sept/Oct), corn maze and Christmas tree farm (Dec).

### Mr. Joe's Farm

(951) 657-8408, <https://mrjoesfarm.org/>

20850 Old Elsinore Rd., Perris, 92570

Non-profit. Petting zoo, family friendly.

### Oasis Date Gardens

(800) 827-8017, <https://oasisdate.com/>

Cafe and store open daily, hours vary in summer

59-111 Grapefruit Blvd., Thermal, 92274

Organic date orchards, cactus garden and farm exhibit.

### Peltzer Pumpkin Farm

(951) 695-1115, [www.peltzerfarms.com](http://www.peltzerfarms.com)

Open daily • 9 am - 5 pm

39925 Calle Contento, Temecula 92591

Winery, gardens, pony rides, petting farm, school tours, private events.

### Riverside-Corona Resource Conservation District

(951) 683-7691, [www.rcrcd.org](http://www.rcrcd.org)

4500 Glenwood Dr., Building A, Riverside 92501

(at the corner of 14th St.)

Visit the **LandUse Learning Center** (see ad page 6) to learn about sustainable land management.



*Agritourism* is "a commercial enterprise at a working farm, ranch, or agricultural plant conducted for the enjoyment of visitors that generates supplemental income for the owner."

From the UC Small Farm Program

<http://sfp.ucdavis.edu/agritourism/factsheets/what/>

Agritourism might include:

- Educational experiences (cannery tours, cooking classes, or wine tasting).
- Entertainment (harvest festivals or barn dances).
- Hospitality services (farm stays, guided tours or outfitter services).
- On-farm direct sales (u-pick operations or roadside stands).

Find more listings in the California Agricultural Tourism Directory: [www.calagtour.org](http://www.calagtour.org)

# AGRICULTURAL RESOURCES

## AGRITOURISM SITES CONT.

**OAK GLEN** More adventures at: <https://www.oakglen.net/>

### Los Rios Rancho

(909) 797-1005, [www.losriosrancho.com](http://www.losriosrancho.com)  
Open Daily • 10 am - 5 pm • U-pick weekends 9 am - 5 pm  
39610 Oak Glen Rd., Oak Glen 92399  
Seasonal fruit stand and u-pick fruit and nuts. Private events and farm tours

### Luther Glen Farm

(909) 797-2513,  
<https://lrcchome.com/luther-glen-farm-landing>  
39136 Harris Rd., Oak Glen 92399

### Riley's Farm

(909) 797-7534, <https://rileysfarm.com>  
Open Mon.-Sat. See website for hours: [rileysfarm.com](http://rileysfarm.com)  
12261 S. Oak Glen Rd., Oak Glen 92399  
Seasonal fruit, flowers and produce, including u-pick.  
Living history events, day camps, live theater, restaurant, bakery, gift shop

### Snow-Line Orchard

(909) 256-0405, <https://snowlineorchard.com>  
Open Wed - Sun, 9 am - 5 pm  
39400 Oak Glen Rd., Oak Glen, 92399  
Apples, cider, winery, U-pick raspberries, donuts

### Willowbrook Apple Farm

(909) 797-9484, <https://willowbrookapplefarm.com/>  
Open during Fall season, check website for dates  
12099 S. Oak Glen Rd.,  
Yucaipa 92399  
U-pick apples and berries,  
cider making, gift shop, tours.



### Tom's Farms

(833) 833-4323, [www.tomsfarms.com](http://www.tomsfarms.com)  
23900 Temescal Canyon Rd., Corona 92883  
See website for schedule and hours  
Restaurants, farmstand, shops, carousel, train ride, live music, kid's activities, events.

### Wickerd Farm

(951) 672-3020, [www.wickerdfarm.com](http://www.wickerdfarm.com)  
Mon. - Sat. • 10 am - 8 pm call to confirm  
26852 Scott Rd., Menifee 92584  
Pumpkin patch, Christmas tree farm, hay rides, butterfly garden.

## OUT OF COUNTIES

### Tanaka Farms

(949) 653-2100, [www.tanakafarms.com](http://www.tanakafarms.com)  
Open daily • 9 am - 5 pm  
5380 3/4 University Dr., Irvine, 92612  
Farm tours, school tours, seasonal holiday events, produce stand, gift shop

### Flower Fields at Carlsbad Ranch

(760) 431-0352, [www.theflowerfields.com](http://www.theflowerfields.com)  
Open daily during the season  
5704 Paseo Del Norte, Carlsbad 92008  
Tours and events during the spring bloom, see website for dates and times



# AGRICULTURAL RESOURCES

## ONLINE RESOURCES

### California Farm to School Program

California Department of Education  
[www.cde.ca.gov/ls/nu/he/farmtoschool.asp](http://www.cde.ca.gov/ls/nu/he/farmtoschool.asp)

### California Foundation for Ag in the Classroom

[www.cfaitc.org/](http://www.cfaitc.org/)

### California Garden Web

<http://cagardenweb.ucanr.edu>

### California School Garden Network

[www.csgn.org/california](http://www.csgn.org/california)

### Citrus Experiment Station

<http://cnas.ucr.edu/about/history/ces.html>

### Earthwatch Institute

<https://earthwatch.org/Education>

### Edible Schoolyard Project

<http://www.edibleschoolyard.org>

Connects educators around the world to build and share a K-12 edible education curriculum

### edWeb: Growing School Gardens

A professional learning and social network

<https://www.edweb.net/schoolgardens>

### Kids Gardening

[www.kidsgardening.org/school-gardening](http://www.kidsgardening.org/school-gardening)

### Learn about Ag

<http://learnaboutag.org/>

### National Gardening Association

<https://garden.org/>

### Riverside County Department of Waste Resources

<http://www.rcwaste.org/>

### Riverside Food Systems Alliance

<https://riversidefood.org/>

Beginner farmer training

*Fresh and Local Food Guide*

<https://riversidefood.org/resources/>

### City of Riverside Urban Gardens and Food Sustainability

Interactive maps with information on the city's agriculture, food systems, and other topics

<https://riversideca.gov/it/gis>

[UrbanGardensFoodSustainability.asp](http://UrbanGardensFoodSustainability.asp)

### School Gardens and Native Plants

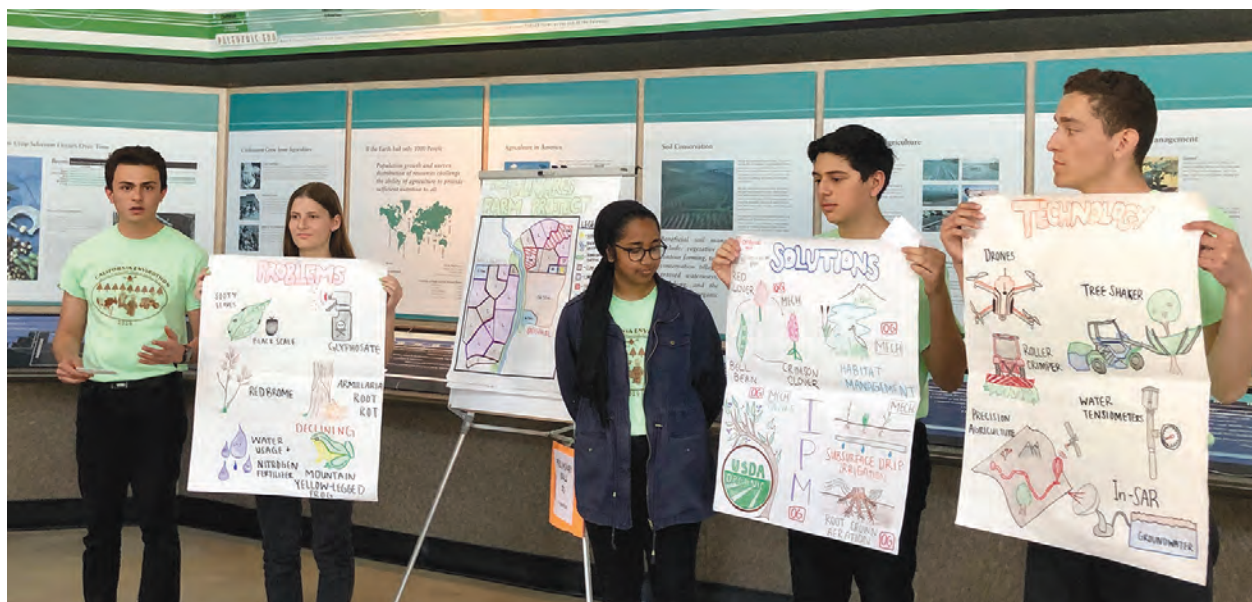
<https://www.cnps.org/gardening/school-gardens>

### UC Agriculture and Natural Resources Catalog

(800) 994-8849, <http://anrcatalog.ucanr.edu/>

*Tried and True or Something New? Selected Citrus Varieties for the Home Gardener*

<https://anrcatalog.ucanr.edu/Details.aspx?itemNo=8472>



High school teams compete in Envirothon



# PROFESSIONAL RESOURCES

## TRAINING AND ORGANIZATIONS

### Action Driven Inquiry

[www.actiondriveninquiry.com](http://www.actiondriveninquiry.com)

Mary Borobia Walls, [actiondriveninquiry@gmail.com](mailto:actiondriveninquiry@gmail.com)

### Association for Environmental and Outdoor Education

<https://aeoe.org/>

The California state affiliate of NAAEE. Hosts SoCal conferences.

### Americorps

<https://www.nationalservice.gov/programs/ Americorps>

### Cal Poly Pomona College of Agriculture

[www.cpp.edu/~agri/](http://www.cpp.edu/~agri/)

### Cal State San Marcos, Environmental Leadership Institute

(760) 750-3020

[www.csusm.edu/temecula/certificateprograms/eli/](http://www.csusm.edu/temecula/certificateprograms/eli/)

### California Conservation Corps (CCC)

<https://ccc.ca.gov/>

### California Naturalist Program

<http://calnat.ucanr.edu/>

### California Women for Agriculture Coachella Valley Chapter

<https://www.facebook.com/CoachellaValleyCWA/>

### Environmental Leadership Academy

#### Cal State San Marcos Temecula

[https://www.csusm.edu/temecula/certificateprograms/eli/education\\_training/index.html](https://www.csusm.edu/temecula/certificateprograms/eli/education_training/index.html)

### Farmworker Institute of Education

#### & Leadership Development (FIELD)

Beginner farmer training program

[www.farmworkerinstitute.org](http://www.farmworkerinstitute.org)

### GRID Alternatives

<https://gridalternatives.org/>

### Inland Area Science Teachers Association

[www.iasta.org](http://www.iasta.org)

### National Association of Environmental Professionals

<https://www.naep.org/>

### National Association of Interpretation (NAI)

<https://www.interpnet.com/>

### NAI Wild West Region

<https://nairegion8.weebly.com/wild-west-region.html>

### National Parks Conservation Association

CA Desert Field Office (760) 366-7785

Mojave Field Office (760) 957-7887

### Pomona College Outdoor Education Center

333 N. College Way, Claremont 91711

(909) 607-8607

<https://www.pomona.edu/administration/outdoor-education-center>

### Project Learning Tree

[https://ucanr.edu/sites/PLT\\_UCCE/](https://ucanr.edu/sites/PLT_UCCE/)

### Project WET

<http://www.projectwet.org/>

### Project WILD

<http://www.projectwild.org/>

### Riverside NextGen Farmer Training Program

10 month training.

<https://riversidefood.org/nextgen-farmer-training-program/>

### UC Riverside Extension

(951) 827-5804, <https://www.extension.ucr.edu/>

***Congratulations to the Board, sponsors  
and committee volunteers***

## ***of the Environmental Education Collaborative***

**Your work is important!  
Thank You!**



**Santa Rosa Plateau  
Nature Education  
Foundation**

***No Child Left Inside***

***Fostering Youth Environmental Stewardship  
www.srpnef.org***



# PROFESSIONAL RESOURCES

## ONLINE RESOURCES

### American Outdoors Association

<http://www.americaoutdoors.org>

### Association for Environmental Studies and Sciences

<https://aessonline.org/>

### Archi's Institute for Sustainable Agriculture with Cal Poly Pomona

<http://archisinstitute.com>

### Cal Poly Pomona College of Agriculture

<https://www.cpp.edu/~agri/departments/index.shtml>

### California Environmental Education Interagency Network (CEEIN)

<https://www.coastal.ca.gov/publiced/ceein/>

<https://www.cde.ca.gov/pd/ca/sc/oeec/ceein.asp>

Find CEEIN's online calendar and list of state partners and programs:

<https://www.coastal.ca.gov/publiced/ceein/#resources>

### California Outdoor Engagement Coalition

<https://outdoorengagement.berkeley.edu/>

### Climate Change Education

<http://www.climatechangeeducation.org>

### Ecological Society of America (ESA)

<http://www.esa.org/>

### Educational Realms

<http://www.stemworks.org/>

(Formerly the ERIC Environmental Education Resources Website)

### edWeb.net

<https://home.edweb.net/>

Professional learning communities

### EE-Pro

<https://naaee.org/eeopro>

Online platform for development and resources.

### Environmental Education and Training Partnership (EETAP)

<http://www.eetap.org/>

### Environmental Inquiry

<http://ei.cornell.edu>

### Environmental Science

<https://www.environmentalscience.org/>

### Engaging Youth as Environmental Citizens

<https://earthforce.org/>

### Environmental Literacy Council

<http://www.enviroliteracy.org/>

### EPA Environmental Education Center

<http://www.epa.gov/teachers/>

### Global Environmental Education Partnership (GEEP)

[www.thegeep.org](http://www.thegeep.org)



Learning about plant residue use in soil at GrowRIVERSIDE's Growers Forum



# PROFESSIONAL RESOURCES

## ONLINE RESOURCES CON'T.

### **GLOBE Program**

<http://www.globe.gov/>

### **Green Teacher**

<https://greenteacher.com/> info@greenteacher.com

### **Groundwater Institute**

<https://www.groundwater.org>

### **Hands on the Land**

<https://www.handsontheland.org/>

### **My Environmental Education Evaluation Resource Assistant (MEERA)**

<http://meera.snre.umich.edu/>

### **Pomona College Organic Farm**

<http://farm.pomona.edu/>

### **National Education Association (NEA)**

<http://www.nea.org/tools/EnvironmentalEducationActivitiesAndResources.html>

### **National Environmental Education Foundation (NEEF) & Environmental Ed Week**

<https://www.neefusa.org/environmental-education-week>

### **National Geographic Mapmaker Interactive**

<https://mapmaker.nationalgeographic.org/>

### **North American Association for Environmental Education (NAAEE)**

<https://naaee.org/>

### **Sierra Club**

<http://vault.sierraclub.org/education/websites.asp>  
Listing of environmental resources

### **Society for Conservation Biology (SCB)**

North American Region: <http://www.conbio.org/groups/sections/north-america>

### **Soil and Water Conservation Society (SWCS)**

California-Nevada Chapter:  
<https://californianevadaswcs.org/>  
National: <http://www.swcs.org>

### **Soil Science Society of America**

<https://www.soils.org/>

### **South Coast Air Quality Management District**

<http://www.aqmd.gov/>

### **State Education & Environment Roundtable**

[www.seer.org](http://www.seer.org)

### **Talaterra**

podcast: <https://talaterra.com>  
tania@taniamarien.com

### **Ten Strands**

<https://tenstrands.org>

### **U.S. Department of Energy Energy Efficiency and Renewable Energy**

<http://www.eere.energy.gov/education/lessonplans/>

### **Water Environment Federation (WEF)**

<http://www.wef.org>

### **The Wildlife Society**

<http://wildlife.org>





# ABOUT EEC

The Environmental Education Collaborative works to develop funding, programs, and policies to support environmental education in Riverside and San Bernardino counties.

EEC's Goals:

- To engage and influence funders, community members, and businesses to support an Environmental Education Fund/Grant program resulting in increased environmental literacy.
- To identify, promote, and leverage existing EE programs and resources
- To influence local and state environmental education policy and initiatives.

EEC uses a Collective Impact model:

*"Social change requires broad, cross-sector coordination. Yet the social sector remains focused on the isolated intervention of individual organizations. Substantially greater progress could be made in alleviating many of our serious and complex social problems if non-profits, governments, businesses and the public were brought together around a common agenda to create collective impact."*

—Stanford University Impact Model

Visit our website to sign up for our free newsletter at: <https://www.enviroedcollaborative.com/>

Find and share your programs and activities at the EEC Facebook page:

<https://www.facebook.com/groups/EECollaborative>

All EEC organization members are provided a free basic listing in this publication and on our website.

With purchased ad space, sponsors are able to provide information about their offerings in as much detail as they wish. For information about advertising in this guide, please contact Diana Ruiz at (909) 238-8338 or [Ruiz@rrcd.org](mailto:Ruiz@rrcd.org).

To sponsor our annual symposium, the small grants program, or the printing of this *Environmental Learning Resources* guide, please contact us.

If you'd like to become more involved with the EEC, please contact a board member:

**Pam Johnson**, Chair  
ECOS (Emerald Cove Outdoor Science) Institute  
[pamjohnson@ecosinstitute.com](mailto:pamjohnson@ecosinstitute.com)

**Carrie Raleigh**, Past Chair  
Consultant  
[raleigh.carrie@gmail.com](mailto:raleigh.carrie@gmail.com)

**Caroline Conway**, Secretary  
[c-conway@earthlink.net](mailto:c-conway@earthlink.net) (760) 401-5219

**Mary Borobia Walls**, Project Manager:  
Professional Development  
Action Driven Inquiry  
[maryborobiawalls@gmail.com](mailto:maryborobiawalls@gmail.com)

**Jen Futterman**, Co-Secretary  
[jenniferevefutterman@gmail.com](mailto:jenniferevefutterman@gmail.com)

**Diana Ruiz**, Project Manager:  
Environmental Learning Resources  
Riverside-Corona Resource  
Conservation District  
[ruiz@rrcd.org](mailto:ruiz@rrcd.org) (909) 238-8338

Name \_\_\_\_\_

Address \_\_\_\_\_

City \_\_\_\_\_ Zip \_\_\_\_\_

Phone \_\_\_\_\_ Email \_\_\_\_\_

To contribute, visit us online at [www.enviroedcollaborative.com](http://www.enviroedcollaborative.com) or enclose this form with payment and mail to:

- |  |   |
|--|---|
| <input type="checkbox"/> Volunteer       | <input type="checkbox"/> Limited Income \$10    |
| <input type="checkbox"/> Individual \$35 | <input type="checkbox"/> Sustaining \$100       |
| <input type="checkbox"/> Family \$50     | <input type="checkbox"/> Business Partner \$250 |

**The Community Foundation**  
3700 Sixth St., Ste 200  
Riverside, CA 92501

**Please make checks payable to The Community Foundation, the fiscal sponsor for the EEC.**

EEC is a project of The Community Foundation, a Section 501(c)(3) tax-exempt organization. Your donation may be deductible as a charitable contribution. Please consult with your tax advisor.





**Riverside-Corona  
Resource Conservation District**

4500 Glenwood Dr., Building A  
Riverside, CA 92501  
(951) 683-7691  
(951) 683-3814 FAX  
[www.rcrcd.org](http://www.rcrcd.org)  
Facebook: [www.facebook.com/RCRCD](https://www.facebook.com/RCRCD)

NON-PROFIT  
U.S. POSTAGE  
**PAID**  
RIVERSIDE  
CALIFORNIA  
PERMIT NO. 944

The *Environmental Learning Resources* guide was developed by the Riverside-Corona Resource Conservation District for the Environmental Education Collaborative and partners.

***We invite you to join with us in supporting the Environmental Education Collaborative (EEC) of Riverside and San Bernardino Counties.***

The EEC strives to develop resources that support environmental education programs, so that everyone has the opportunity to experience nature and to learn about caring for our natural resources. With the support of over 25 local partners, the Collaborative works to:

- bring funding to the region to increase environmental literacy
- develop a resource network to support and promote existing programs
- monitor and influence environmental education policy and initiatives.

**VISION**

We envision a community where:

- every person can experience nature every day
- teachers and environmental ed providers have the resources to grow programs
- environmental literacy is embraced as an essential component in child development, healthy communities, and environmental stewardship.

**WHO?**

People like you. We collaborate with teachers, school districts, program providers, non-profits, businesses, government agencies, and funders in an effort to ensure that every student can experience environmental education. The Community Foundation serves as our fiscal sponsor.

**HOW?**

The EEC is a grassroots collaborative, guided by the tenants of Stanford University's Collective Impact Model. Together, we work to elevate environmental education to a new level of importance and urgency.

Learn more about the Environmental Education Collaborative at [www.enviroedcollaborative.com](http://www.enviroedcollaborative.com)  
Share and find programs and resources at [www.Facebook.com/groups/eecollaborative/](https://www.facebook.com/groups/eecollaborative/)

For additions to this guide, contact editor Diana Ruiz at [ruiz@rcrcd.org](mailto:ruiz@rcrcd.org).



**Environmental  
Education  
Collaborative**  
of Riverside and San Bernardino Counties